



HENEGHAN AND ASSOCIATES, P.C.

CIVIL ENGINEERS • LAND SURVEYORS

WWW.HAENGR.COM

Since 1986

Addendum No. 1

for

East Pearl Street Parking Lot Improvements

For City of Jerseyville
Jersey County, Illinois

H&A File No. 140-337
March 11, 2021

The Contract Documents prepared by Heneghan & Associates, P.C. for the East Pearl Parking Lot Improvements for the City of Jerseyville, Illinois, are hereby amended or clarified as follows:

GENERAL

Attached, find the Pre-Bid meeting Minutes and attendance sheet from the Pre-Bid meeting held March 10, 2021, 10:00 am at Feyerabend Building in Jerseyville, Illinois. The Minutes are made a part of this Addendum, and the items stated in the Minutes shall be followed.

PROJECT SPECIFICATIONS

Changes/additions/clarifications to the project specifications are as listed below:

Bid Form: **A REVISED BID FORM is included with the addendum, only bids submitted on this REVISED BID FORM will be accepted.**

Special Provisions:

1. The special provisions have been revised to included electrical – lighting, plumbing – irrigation, and stamped Portland cement concrete pavement. The special provision for dumpster enclosure has been revised.

□ 838 East McCord
Centralia, IL 62801
(P) 618-533-6525
(F) 618-533-6652

□ 310A Vision Drive
Columbia, IL 62236
(P) 618-281-8133
(F) 618-281-8290

□ 1004 State Highway 16
Jerseyville, IL 62052
(P) 618-498-6418
(F) 618-498-6410

□ 1929 Richardson Road
Arnold, MO 63010
(P) 636-464-3610
(F) 636-464-2059

“DEDICATING OUR SERVICES TO STRENGTHEN CLIENT TRUST”

PROJECT DRAWINGS

Changes/additions/clarifications to the project drawings are as listed below:

Sheet 3: Changed summary of quantities


Sheet 4: Changed pavement removal limits

Sheet 5: Added curb ramps on the north side of Pearl Street and made revisions to entrances on Pearl Street.

Sheet 6: Added curb ramps on the north side of Pearl Street and made revisions to entrances on Pearl Street

Sheet 9: Added details for dumpster enclosure and drainage trench with cover

End of Addendum.



J. Adam Lott, P.E.
Project Engineer

City of Jerseyville
East Pearl Street Parking Lot Improvements
Pre-Bid Meeting Agenda-Minutes

Wednesday, March 10, 10:00 A.M.

City of Jerseyville- Feyerbend Building, 201 E. Spruce St., Jerseyville, IL 62052

1. Introduce: A. Heneghan & Associates' Representatives – Adam Lott
 B. City of Jerseyville Representatives – Bob Manns
2. Please sign the Attendance Sheet.
3. Bid Opening: **Wednesday, March 17, 2021 @ 2:00 pm**, City of Jerseyville, Feyerbend Building, 201 E. Spruce St., Jerseyville, IL 62052. **Sealed Bids will be received attention to Bob Manns, Public Works Director, at the City of Jerseyville, 115 E. Prairie St., Jerseyville, IL, 62052, until 1:00 PM local time on March 17, 2021. (Please note the City of Jerseyville lobby is closed; bids will be accepted by appointment or drive through window.) After 1:00PM and until 2:00PM on March 17, 2021 the bid packet will be accepted at the City of Jerseyville – Feyerbend Building, 201 E. Spruce St., Jerseyville, IL 62052, where the Bids received will be publicly opened and read at 2:00 PM local time on March 17, 2021.**
 - a. Addendum must be acknowledged (Addendum will be emailed and mailed on Thursday March 11, 2021).
 - b. 5% Bid Bond.
 - c. Must use prevailing wage rates listed in the specifications.
 - d. The City is tax exempt as a not for profit organization.
 - e. Hold bid prices for 90 days.
 - f. Engineer's estimate is \$480,000 for the Base Bid plus Alternate #1
4. If the Bids are acceptable, then an award recommendation letter will be given to the City of Jerseyville for acceptance. If accepted, the Contract will be tentatively awarded at the City's March 23, 2021, council meeting. The CONTRACTOR will then have two weeks to execute the necessary paperwork and bonding requirements. The Notice to Proceed would be issued by approximately April 6, 2021, with a construction start date of approximately April 12, 2021. The final completion date will be determined by the construction contract date awarded of 60 or 180 days.
5. Easements – This project is on City property and ROW. The Contractor shall not get off authorized areas without written consent from the landowner.
6. Submit pay request(s) fourteen (14) days prior to first monthly council meeting (first or second Tuesday of each month) to Engineer. Once approved by the City the pay request will be paid by City of Jerseyville (within 30 days).
7. Planholder's lists available upon request and at online at www.haengr.com.
8. Clarifications to the Plans and Specifications currently include the following:
 - a. Plans: The plans will have some revisions to the parking lot entrance on E. Pearl St. and curb ramps at Pearl St. & Jefferson St. intersection. A detail and pay item will be added for handling drainage across sidewalk and curbed areas.
 - b. Specs: N/A
9. Representatives of HA and the City of Jerseyville are available to review the project site after the pre-bid meeting.
10. Comments from Heneghan and Associates representatives:

The project will include some streetscaping and lighting items as part of the addendum. (After pre-bid meeting it was decided to not included streetscaping items.)

Ameren will be relocating some utility poles during construction.

Only one parking lot will be allowed to be shutdown at a time, if both the base bid and alternate are

selected. The west parking lot shall be completed first, if both parking lots are included in the project.
The project is being bid with a 60 day and 180 day contract length for the base bid and if the Alternate is
selected then 30 days will be added to the length selected for the base bid.

The adjacent roadways shall be kept free of dirt, mud, or other debris.

The fire and police station are located on the south side of Arch St. in the project area and shall remain
accessible at all times.

Contractor will be required to use Heneghan & Associates, PC for construction staking and a staking cost
estimate will be provided upon request by the contractor.

11. Comments from the City of Jerseyville representatives:

The city is currently finalizing plans for the lighting of the parking lot and will be included as part of the
addendum.

The project will be funded by TIF and local city funds.

The city would like for the contractor to used local sub-contractors if possible.

The contractor shall minimize the length of time that the alleyway is shut down.

12. Comments/Questions from Contractor's:

The alleyway construction shall be staged to allow for at least 1 drive through lane to remain open at all
times.

The trash enclosure will be changed as part of the addendum.

The stripping for the drop off zones is included in the project quantities.

The conduit under pavement shall include trench backfill.

Irrigation will be added as part of the addendum.

The existing HMA parking lot on the east side of Jefferson St. shall have cracks sealed as part of the
resealing. The cracks shall be filled with hot joint sealer and be incidental to the HMA resealing pay
item.

The pcc pavement shall have joints filled with hot bituminous material. This shall be incidental the pcc
pay item.

BID FORM

City of Jerseyville

East Pearl Street Parking Lot Improvements

00140-337

TABLE OF CONTENTS

	Page
Article 1 – Bid Recipient	1
Article 2 – Bidder’s Acknowledgements	1
Article 3 – Bidder’s Representations.....	1
Article 4 – Bidder’s Certification	2
Article 5 – Basis of Bid	3
Article 6 – Time of Completion	9
Article 7 – Attachments to this Bid	9
Article 8 – Defined Terms.....	9
Article 9 – Bid Submittal.....	10

ARTICLE 1 – BID RECIPIENT

1.01 This Bid is submitted to:

***Bob Manns, Public Works Director
City of Jerseyville
115 E. Prairie St.
Jerseyville, IL, 62052***

1.02 The undersigned Bidder proposes and agrees, if this Bid is accepted, to enter into an Agreement with Owner in the form included in the Bidding Documents to perform all Work as specified or indicated in the Bidding Documents for the prices and within the times indicated in this Bid and in accordance with the other terms and conditions of the Bidding Documents.

ARTICLE 2 – BIDDER'S ACKNOWLEDGEMENTS

2.01 Bidder accepts all of the terms and conditions of the Instructions to Bidders, including without limitation those dealing with the disposition of Bid security. This Bid will remain subject to acceptance for 90 days after the Bid opening, or for such longer period of time that Bidder may agree to in writing upon request of Owner.

ARTICLE 3 – BIDDER'S REPRESENTATIONS

3.01 In submitting this Bid, Bidder represents that:

A. Bidder has examined and carefully studied the Bidding Documents, and any data and reference items identified in the Bidding Documents, and hereby acknowledges receipt of the following Addenda:

<u>Addendum No.</u>	<u>Addendum, Date</u>
_____	_____
_____	_____
_____	_____
_____	_____

- B. Bidder has visited the Site, conducted a thorough, alert visual examination of the Site and adjacent areas, and become familiar with and satisfied itself as to the general, local, and Site conditions that may affect cost, progress, and performance of the Work.
- C. Bidder is familiar with and has satisfied itself as to all Laws and Regulations that may affect cost, progress, and performance of the Work.
- D. Bidder has carefully studied all: (1) reports of explorations and tests of subsurface conditions at or adjacent to the Site and all drawings of physical conditions relating to existing surface or subsurface structures at the Site that have been identified in the Supplementary Conditions, especially with respect to Technical Data in such reports and drawings, and (2) reports and drawings relating to Hazardous Environmental Conditions, if any, at or adjacent to the Site that have been identified in the Supplementary Conditions, especially with respect to Technical Data in such reports and drawings.
- E. Bidder has considered the information known to Bidder itself; information commonly known to contractors doing business in the locality of the Site; information and observations obtained from visits to

the Site; the Bidding Documents; and any Site-related reports and drawings identified in the Bidding Documents, with respect to the effect of such information, observations, and documents on (1) the cost, progress, and performance of the Work; (2) the means, methods, techniques, sequences, and procedures of construction to be employed by Bidder; and (3) Bidder's safety precautions and programs.

- F. Bidder agrees, based on the information and observations referred to in the preceding paragraph, that no further examinations, investigations, explorations, tests, studies, or data are necessary for the determination of this Bid for performance of the Work at the price bid and within the times required, and in accordance with the other terms and conditions of the Bidding Documents.
- G. Bidder is aware of the general nature of work to be performed by Owner and others at the Site that relates to the Work as indicated in the Bidding Documents.
- H. Bidder has given Engineer written notice of all conflicts, errors, ambiguities, or discrepancies that Bidder has discovered in the Bidding Documents, and confirms that the written resolution thereof by Engineer is acceptable to Bidder.
- I. The Bidding Documents are generally sufficient to indicate and convey understanding of all terms and conditions for the performance and furnishing of the Work.
- J. The submission of this Bid constitutes an incontrovertible representation by Bidder that Bidder has complied with every requirement of this Article, and that without exception the Bid and all prices in the Bid are premised upon performing and furnishing the Work required by the Bidding Documents.

ARTICLE 4 – BIDDER'S CERTIFICATION

4.01 Bidder certifies that:

- A. This Bid is genuine and not made in the interest of or on behalf of any undisclosed individual or entity and is not submitted in conformity with any collusive agreement or rules of any group, association, organization, or corporation;
- B. Bidder has not directly or indirectly induced or solicited any other Bidder to submit a false or sham Bid;
- C. Bidder has not solicited or induced any individual or entity to refrain from bidding; and
- D. Bidder has not engaged in corrupt, fraudulent, collusive, or coercive practices in competing for the Contract. For the purposes of this Paragraph 4.01.D:
 - 1. "corrupt practice" means the offering, giving, receiving, or soliciting of any thing of value likely to influence the action of a public official in the bidding process;
 - 2. "fraudulent practice" means an intentional misrepresentation of facts made (a) to influence the bidding process to the detriment of Owner, (b) to establish bid prices at artificial non-competitive levels, or (c) to deprive Owner of the benefits of free and open competition;
 - 3. "collusive practice" means a scheme or arrangement between two or more Bidders, with or without the knowledge of Owner, a purpose of which is to establish bid prices at artificial, non-competitive levels; and
 - 4. "coercive practice" means harming or threatening to harm, directly or indirectly, persons or their property to influence their participation in the bidding process or affect the execution of the Contract.

ARTICLE 5 – BASIS OF BID

5.01 Bidder will complete the Work in accordance with the Contract Documents for the following price(s):

The following Base Bid "A" PCC Parking Lot Option and Base Bid "B" HMA Parking Lot Option will be for a 60 day construction contract time.

PROJECT: East Pearl Street Parking Lot Improvements					
H&A FILE NO.: 00140-337					
60 Day Contract Time					
ITEMS - BASE BID "A" PCC Parking Lot Option		QUANTITY	UNIT	UNIT PRICE	ESTIMATED TOTAL PRICE
1	Furnished Excavation (Top Soil)	150	CY	\$	\$
2	Portland Cement Concrete Pavement 7 Inch	2880	SQ YD	\$	\$
3	Aggregate Base Course, CA-6	800	TON	\$	\$
4	Incidental Hot-Mix Asphalt Surfacing	50	TON	\$	\$
5	Portland Cement Concrete Sidewalk	3200	SQ FT	\$	\$
6	Stamped Portland Cement Concrete Pavement	2200	SQ FT	\$	\$
7	Portland Cement Concrete Curb	720	FOOT	\$	\$
8	Portland Cement Concrete Curb & Gutter - B6.18	660	FOOT	\$	\$
9	Portland Cement Concrete Gutter	262	FOOT	\$	\$
10	Detectable Warnings	154	SQ FT	\$	\$
11	Pavement And Curb Removal	2170	SQ YD	\$	\$
12	Dumpster Enclosure	1	L SUM	\$	\$
13	Remove And Reset Existing Signs	5	EACH	\$	\$
14	Remove Existing Signs	2	EACH	\$	\$
15	New Signing	2	EACH	\$	\$
16	4" Pavement Marking	4200	FOOT	\$	\$
17	12" Pavement Marking	1000	FOOT	\$	\$
18	Pavement Marking Symbol	75	SQ FT	\$	\$
19	Mobilization	1	L SUM	\$	\$
20	Construction Layout	1	L SUM	\$	\$
21	Traffic Control And Protection, (Special)	1	L SUM	\$	\$
TOTAL BASE BID "A" 60 DAY AMOUNT				\$	-
					Dollars
(In Words)					

PROJECT: East Pearl Street Parking Lot Improvements					
H&A FILE NO.: 00140-337					
60 Day Contract Time					
ITEMS - BASE BID "B" HMA Parking Lot Option		QUANTITY	UNIT	UNIT PRICE	ESTIMATED TOTAL PRICE
1	Furnished Excavation (Top Soil)	150	CY	\$	\$
2	Portland Cement Concrete Pavement - 7 Inch	1220	SQ YD	\$	\$
3	Hot-Mix Asphalt Surface Course (Mix C N50)	150	TON	\$	\$
4	Hot-Mix Asphalt Base Course (Mix C N50)	250	TON	\$	\$
5	Aggregate Base Course, CA-6	1200	TON	\$	\$
6	Incidental Hot-Mix Asphalt Surfacing	50	TON	\$	\$
7	Portland Cement Concrete Sidewalk	3200	SQ FT	\$	\$
8	Stamped Portland Cement Concrete Pavement	2200	SQ FT		
9	Portland Cement Concrete Curb	720	FOOT	\$	\$
10	Portland Cement Concrete Curb & Gutter - B6.18	660	FOOT	\$	\$
11	Portland Cement Concrete Gutter	262	FOOT	\$	\$
12	Detectable Warnings	154	SQ FT	\$	\$
13	Pavement And Curb Removal	2170	SQ YD	\$	\$
14	Dumpster Enclosure	1	L SUM	\$	\$
15	Remove And Reset Existing Signs	5	EACH	\$	\$
16	Remove Existing Signs	2	EACH	\$	\$
17	New Signing	2	EACH	\$	\$
18	4" Pavement Marking	4200	FOOT	\$	\$
19	12" Pavement Marking	1000	FOOT	\$	\$
20	Pavement Marking Symbol	75	SQ FT	\$	\$
21	Mobilization	1	L SUM	\$	\$
22	Construction Layout	1	L SUM	\$	\$
23	Traffic Control And Protection, (Special)	1	L SUM	\$	\$
TOTAL BASE BID "B" 60 DAY AMOUNT				\$	-

Dollars

(In Words)

The following Base Bid "A" PCC Parking Lot Option and Base Bid "B" HMA Parking Lot Option will be for a 180 day construction contract time.

PROJECT: East Pearl Street Parking Lot Improvements					
H&A FILE NO.: 00140-337					
180 Day Contract Time					
ITEMS - BASE BID "A" PCC Parking Lot Option		QUANTITY	UNIT	UNIT PRICE	ESTIMATED TOTAL PRICE
1	Furnished Excavation (Top Soil)	150	CY	\$	\$
2	Portland Cement Concrete Pavement - 7 Inch	2880	SQ YD	\$	\$
3	Aggregate Base Course, CA-6	800	TON	\$	\$
4	Incidental Hot-Mix Asphalt Surfacing	50	TON	\$	\$
5	Portland Cement Concrete Sidewalk	3200	SQ FT	\$	\$
6	Stamped Portland Cement Concrete Pavement	2200	SQ FT	\$	\$
7	Portland Cement Concrete Curb	720	FOOT	\$	\$
8	Portland Cement Concrete Curb & Gutter - B6.18	660	FOOT	\$	\$
9	Portland Cement Concrete Gutter	262	FOOT	\$	\$
10	Detectable Warnings	154	SQ FT	\$	\$
11	Pavement And Curb Removal	2170	SQ YD	\$	\$
12	Dumpster Enclosure	1	L SUM	\$	\$
13	Remove And Reset Existing Signs	5	EACH	\$	\$
14	Remove Existing Signs	2	EACH	\$	\$
15	New Signing	2	EACH	\$	\$
16	4" Pavement Marking	4200	FOOT	\$	\$
17	12" Pavement Marking	1000	FOOT	\$	\$
18	Pavement Marking Symbol	75	SQ FT	\$	\$
19	Mobilization	1	L SUM	\$	\$
20	Construction Layout	1	L SUM	\$	\$
21	Traffic Control And Protection, (Special)	1	L SUM	\$	\$
TOTAL BASE BID "A" 180 DAY AMOUNT				\$	-
					Dollars
(In Words)					

PROJECT: East Pearl Street Parking Lot Improvements					
H&A FILE NO.: 00140-337					
180 Day Contract Time					
ITEMS - BASE BID "B" HMA Parking Lot Option		QUANTITY	UNIT	UNIT PRICE	ESTIMATED TOTAL PRICE
1	Furnished Excavation (Top Soil)	150	CY	\$	\$
2	Portland Cement Concrete Pavement - 7 Inch	1220	SQ YD	\$	\$
3	Hot-Mix Asphalt Surface Course (Mix C N50)	150	TON	\$	\$
4	Hot-Mix Asphalt Base Course (Mix C N50)	250	TON	\$	\$
5	Aggregate Base Course, CA-6	1200	TON	\$	\$
6	Incidental Hot-Mix Asphalt Surfacing	50	TON	\$	\$
7	Portland Cement Concrete Sidewalk	3200	SQ FT	\$	\$
8	Stamped Portland Cement Concrete Pavement	2200	SQ FT	\$	\$
9	Portland Cement Concrete Curb	720	FOOT	\$	\$
10	Portland Cement Concrete Curb & Gutter - B6.18	660	FOOT	\$	\$
11	Portland Cement Concrete Gutter	262	FOOT	\$	\$
12	Detectable Warnings	154	SQ FT	\$	\$
13	Pavement And Curb Removal	2170	SQ YD	\$	\$
14	Dumpster Enclosure	1	L SUM	\$	\$
15	Remove And Reset Existing Signs	5	EACH	\$	\$
16	Remove Existing Signs	2	EACH	\$	\$
17	New Signing	2	EACH	\$	\$
18	4" Pavement Marking	4200	FOOT	\$	\$
19	12" Pavement Marking	1000	FOOT	\$	\$
20	Pavement Marking Symbol	75	SQ FT	\$	\$
21	Mobilization	1	L SUM	\$	\$
22	Construction Layout	1	L SUM	\$	\$
23	Traffic Control And Protection, (Special)	1	L SUM	\$	\$
TOTAL BASE BID "B" 180 DAY AMOUNT				\$	-

Dollars

(In Words)

The Alternate Bid #1 may be paired with either of the 60 or 180 day Base Bids above

PROJECT: East Pearl Street Parking Lot Improvements					
H&A FILE NO.: 00140-337					
ITEMS - ALTERNATE BID #1 East Parking Lot Option		QUANTITY	UNIT	UNIT PRICE	ESTIMATED TOTAL PRICE
1	Tree Removal	1	L SUM	\$	\$
2	Furnished Excavation (Top Soil)	250	CY	\$	\$
3	Portland Cement Concrete Pavement - 7 Inch	40	SQ YD	\$	\$
4	Hot-Mix Asphalt Surface Course (Mix C N50)	10	TON	\$	\$
5	Hot-Mix Asphalt Base Course (Mix C N50)	15	TON	\$	\$
6	Aggregate Base Course, CA-6	400	TON	\$	\$
7	Incidental Hot-Mix Asphalt Surfacing	60	TON	\$	\$
8	Portland Cement Concrete Sidewalk	2184	SQ FT	\$	\$
9	Stamped Portland Cement Concrete Sidewalk	280	SQ FT		
10	Portland Cement Concrete Curb & Gutter - B6.18	1332	FOOT	\$	\$
11	Reseal Existing Hot-Mix Asphalt Parking Lot	1260	SY	\$	\$
12	Detectable Warnings	100	SQ FT	\$	\$
13	Pavement And Curb Removal	1435	SQ YD	\$	\$
14	2" HDPE Conduit	300	FOOT	\$	\$
15	Remove And Reset Existing Signs	5	EACH	\$	\$
16	4" Pavement Marking	1000	FOOT	\$	\$
17	Pavement Marking Symbol	25	SQ FT	\$	\$
18	Electrical - Lighting	1	LS		
19	Plumbing - Irrigation	1	LS		
20	Mobilization	1	L SUM	\$	\$
21	Construction Layout	1	L SUM	\$	\$
22	Traffic Control And Protection, (Special)	1	L SUM	\$	\$
TOTAL ALTERNATE BID #1 AMOUNT				\$	-

Dollars

(In Words)

ARTICLE 6 – TIME OF COMPLETION

- 6.01 Bidder agrees that the Work will be substantially complete and will be completed and ready for final payment in accordance with Paragraph 15.06 of the General Conditions on or before the dates or within the number of calendar days indicated in the Agreement.
- 6.02 Bidder accepts the provisions of the Agreement as to liquidated damages.

ARTICLE 7 – ATTACHMENTS TO THIS BID

- 7.01 The following documents are submitted with and made a condition of this Bid:
- A. Required Bid security;
 - B. List of Proposed Subcontractors;
 - C. List of Proposed Suppliers;
 - D. List of Project References;
 - E. Evidence of authority to do business in the state of the Project; or a written covenant to obtain such license within the time for acceptance of Bids;
 - F. Contractor's License No.: **[or]** Evidence of Bidder's ability to obtain a State Contractor's License and a covenant by Bidder to obtain said license within the time for acceptance of Bids;
 - G. Required Bidder Qualification Statement with supporting data; and

ARTICLE 8 – DEFINED TERMS

- 8.01 The terms used in this Bid with initial capital letters have the meanings stated in the Instructions to Bidders, the General Conditions, and the Supplementary Conditions.

ARTICLE 9 – BID SUBMITTAL

BIDDER: *[Indicate correct name of bidding entity]*

By:

[Signature]

[Printed name]

(If Bidder is a corporation, a limited liability company, a partnership, or a joint venture, attach evidence of authority to sign.)

Attest:

[Signature]

[Printed name]

Title:

Submittal Date:

Address for giving notices:

Telephone Number:

Fax Number:

Contact Name and e-mail address:

Bidder's License No.:

(where applicable)

INDEX TO SPECIAL PROVISIONS

<u>ITEM</u>	<u>PAGE NO.</u>
1. LOCATION OF PROJECT	SP1
2. WORK DESCRIPTION.....	SP1
3. SITE INSPECTION.....	SP1
4. SAFETY & PROTECTION.....	SP1
5. PROSECUTION AND PROGRESS	SP3
6. TRAFFIC CONTROL PLAN	SP3
7. TRAFFIC CONTROL & PROTECTION (SPECIAL).....	SP4
8. STATUS OF UTILITIES.....	SP5
9. JOINT UTILITY LOCATING INFORMATION FOR EXCAVATORS (J.U.L.I.E.)	SP6
10. TREE REMOVAL	SP7
11. EARTH EXCAVATION (TOP SOIL)	SP7
12. PORTLAND CEMENT CONCRETE PAVEMENT – 7 INCH	SP7
13. PAVEMENT AND CURB REMOVAL	SP8
14. PORTLAND CEMENT CONCRETE GUTTER.....	SP8
15. CONSTRUCTION LAYOUT	SP8
16. REMOVE AND RESET EXISTING SIGNS.....	SP9
17. REMOVE EXISTING SIGNS	SP9
18. NEW SIGNS	SP9
19. AGGREGATE BASE COURSE, CA-6.....	SP9
20. DUMPSTER ENCLOSURE	SP10
21. INCIDENTAL HOT-MIX ASPHALT SURFACING.....	SP10
22. PORTLAND CEMENT CONCRETE SIDEWALK.....	SP10
23. RESEAL EXISTING HOT-MIX ASPHALT PARKING LOT	SP11
24. ELECTRICAL - LIGHTNG	SP11
25. PLUMBING - IRRIGATION.....	SP11
26. STAMPED PORTLAND CEMENT CONCRETE PAVEMENT.....	SP11

SPECIAL PROVISIONS

These Special Provisions supplement the current editions of the following publications:

- IDOT Standard Specifications for Road and Bridge Construction;
- Supplemental Specifications and Recurring Special Provisions, in effect on the date of the invitation for bids;
- IDOT Highway Standards;
- Manual on Uniform Traffic Control Devices for Streets and Highways;
- Manual of Test Procedures for Materials;
- Standard Specifications for Water and Sewer Main Construction in Illinois.

All aforementioned publications and these Special Provisions shall apply to and govern the construction of East Pearl Street Parking Lot Improvements, in the City of Jerseyville, Jersey County, Illinois. In the case of conflict with part or parts of the aforementioned publications these Special Provisions shall take precedence and govern.

1. LOCATION OF PROJECT

The proposed parking lot improvements are known as the East Pleasant Street Parking Lot Improvements. The proposed improvements project is located between Arch Street and East Pearl Street along the east and west sides of Jefferson Street in the downtown area of Jerseyville. These improvements include PCC and HMA pavement, PCC curb & gutter, PCC sidewalk, and ancillary work.

2. WORK DESCRIPTION

The work included under this contract includes the removal and replacement of the PCC sidewalk, removal and replacement of the alley pavement, removal and replacement of the curb in the project area, and entrance reconstruction. The project will also include construction of a new parking lot along East Pearl St.

The CONTRACTOR shall be responsible for furnishing all labor, materials and equipment necessary to satisfactory complete the project in accordance with the plans, specifications and the provisions stated herein.

3. SITE INSPECTION

The CONTRACTOR shall be responsible for an on-site inspection of the construction site prior to submitting a bid on this project. Submission of a bid on this project indicates the CONTRACTOR is familiar with the construction site and has thoroughly reviewed the construction plans.

4. SAFETY & PROTECTION

The CONTRACTOR shall be responsible for implementing, maintaining, and supervising all safety

programs and precautions in connection with construction of the proposed improvements. The CONTRACTOR shall take all necessary precautions for the safety of and shall provide necessary protection to prevent damage, injury, or loss to:

- 1) All employees on the work and other individuals/organizations who could potentially be affected;
- 2) All completed construction;
- 3) All material and equipment to be incorporated into the work, whether in storage on or off-site;
- 4) Any on-site property adjacent thereto, especially any existing trees, shrubs, lawns, sidewalks, entrance pavement, side road pavement, structures, and utilities that are not designated for removal, relocation, or replacement as a result of the proposed improvements.

The CONTRACTOR shall comply with all local, state, and federal Laws/Regulations to protect individuals and property from damage, injury, or loss. The CONTRACTOR shall be responsible for the erection and maintenance of all necessary safeguards to provide the utmost level of safety and protection. The CONTRACTOR shall be responsible for notifying adjacent property owners and utility owners when construction operations will impact them and cooperate with them on the protection, relocation, replacement, and/or removal of their property in accordance with Article 107.20 of the Standard Specifications for Road and Bridge Construction.

All damage, injury, or loss to items #1 - #4 above, directly or indirectly, in whole or in part, by the CONTRACTOR, any Sub-Contractor, supplier, or any other individual/organization directly or indirectly employed by any of them to execute work or furnish supplies for this project, shall be remedied by the CONTRACTOR (except damage, injury, or loss attributable to faulty Drawings, Specifications, or acts not attributable to the fault/negligence of the CONTRACTOR). The CONTRACTOR'S duties and responsibilities for the safety and protection of said items #1 - #4 above shall continue until all the work is completed and the ENGINEER has issued a notice to the OWNER and CONTRACTOR that all the work is acceptable.

In EMERGENCIES affecting the safety or protection of items #1 - #4 above, the CONTRACTOR is obligated to act, without special instructions/authorization from the ENGINEER or OWNER, to prevent severe damage, injury, or loss. If significant changes to the proposed improvements or variations to the Contract Documents are required as a result of an emergency response, the CONTRACTOR shall promptly provide the ENGINEER with a written notice requesting a Work Directive Change (or Change Order) for the changes/variatioins.

The CONTRACTOR shall designate a responsible representative to serve as the Project Superintendent. The Project Superintendent shall be responsible for ensuring that on-site construction activities are being safely executed to prevent damage, injury, or loss to items #1 - #4 above.

The City of Jerseyville has secured the right-of-way and/or easements necessary for the construction of the work. These documents are on file with the city and may be reviewed by all bidders prior to the bid date. The CONTRACTOR shall contain all of his construction activities within the right of ways and easements as shown on the plans.

Some property owners may have restrictive clauses in their easement regarding trees, shrubbery, fences, private utilities, width of easement, cash crops, etc. These clauses will be listed as

commitments on the plans. The CONTRACTOR shall comply with these restrictive clauses.

The CONTRACTOR shall perform the work in accordance with the provisions of the various county, township and state permits.

Any easements secured by the CONTRACTOR for their convenience are to be considered separate and not related to the project.

5. PROSECUTION AND PROGRESS

This work shall be done in accordance with Section 108 of the Standard Specifications except as herein modified.

The CONTRACTOR will be responsible for sequencing the work to insure that cost is minimized, completion is ensured within the allotted time, and the specified product is constructed. Any out of sequence work, not attributed to an action of the ENGINEER or the City of Jerseyville, which results in additional cost will not form the basis for an increase in contract price.

6. TRAFFIC CONTROL PLAN

Traffic control shall conform to applicable sections of the Standard Specifications for Road and Bridge Construction; the applicable guidelines contained in the "Illinois Manual on Uniform Traffic Control Devices for Streets and Highways", these Special Provisions, the traffic control standards contained herein and in the plans, as well as any special details or traffic control plans.

The CONTRACTOR shall furnish the name of the individual, in his direct employ, who will be responsible for the installation and maintenance of all the traffic control on this project at the preconstruction meeting. If the installation and maintenance of all the traffic control on the project will be the responsibility of a Sub-Contractor, consent shall be requested of the ENGINEER at the time of the preconstruction meeting according to Article 108.01 of the Standard Specifications for Road and Bridge Construction. This shall not relieve the CONTRACTOR of the foregoing requirement of nominating an individual in his direct employ. This nominated individual will be responsible for proper implementation and maintenance of all traffic control on this project in accordance with all applicable portions of the above listed documents.

The CONTRACTOR shall furnish, erect, maintain, and remove all warning signs, flags, barricades and lights according to Article 107.14 and Sections 701, and 703 of the "Standard Specifications for Road and Bridge Construction", the latest edition of the "Manual of Uniform Traffic Devices for Construction and Maintenance Operations" and/or as directed by the ENGINEER. This work shall also include required traffic control for pedestrians and the applicable Highway Standards shall apply.

Any additional cost to the CONTRACTOR due to furnishing, erecting, maintaining and removing all warning signs, flags, barricades and lights as required by the Special Provisions, Traffic Control Standards, Articles 107.14 and Sections 701, and 703 of the "Standard Specification for Roads and Bridge Construction," and "Manual of Uniform Traffic Control Devices for Construction and Maintenance Operations", or as directed by the ENGINEER will be included in the cost of the various items of work involved and no additional compensation will be allowed except as described

herein.

Special attention is called to Articles 107.09 and 107.14 of the Standard Specifications for Road and Bridge Construction and the following Highway Standards: 701001, 701006, 701011, 701301, 701501, 701801, 701901, and BLR 22.

The City of Jerseyville and the ENGINEER must be notified one (1) week prior to any road closures.

7. TRAFFIC CONTROL & PROTECTION (SPECIAL)

All traffic control devices used in this project shall conform to the plans, these Special Provisions, Traffic Control Standards, the Standard Specifications for Traffic Control Items and the Illinois Manual on Uniform Traffic Control Devices for Streets and Highways. No modifications to these requirements will be allowed without prior written approval of the ENGINEER.

Traffic control devices governed by this Special Provision shall include all temporary traffic control signs (including the sign supports), all regulatory signs (including the sign supports), temporary pavement markings, barricades with sand bags, plastic drums, channelization devices, warning lights, flaggers, (if necessary), or any other device utilized for the purpose of guiding, regulating, or warning traffic through the construction zone or guiding traffic around the construction.

The CONTRACTOR shall be responsible for the proper location, installation, and arrangement of all traffic control devices as indicated on the plans, highway standards, or as directed by the ENGINEER. Special attention shall be given to advance warning signs during construction to ensure that driving lane assignments are consistent with properly located barricades at any given stage of construction. The CONTRACTOR shall cover or remove all traffic control devices that are inconsistent with driving lane assignments during construction staging transitions. Any relocation or removal of such traffic control devices which were delivered, installed, and maintained by the CONTRACTOR under this contract shall remain in place until specific authorization is received from the ENGINEER.

All construction vehicles associated with this project shall move with and not against the flow of traffic when approaching the construction area. These vehicles shall enter/exit the work area in such a manner that will not be hazardous to or interfere with traffic. Personal vehicles shall park in specific areas designated for parking.

The CONTRACTOR will be required to update the Engineer on a weekly basis as to his/her progress and anticipated completion within that stage of construction. Likewise, the CONTRACTOR will be required to provide written and verbal notice to all directly affected residents one (1) week prior to any road closure. Contact information for all property owners will be provided to the CONTRACTOR upon request prior to construction.

All traffic control devices and work shall conform to applicable portions of Section 701 of the Standard Specifications for Road and Bridge Construction, the Manual on Uniform Traffic Control Devices for Streets and Highways.

The CONTRACTOR, when directed by the ENGINEER shall remove all traffic control devices which were furnished, installed and maintained by him under this contract, and such devices shall

remain in place until specific authorization for relocation or removal is received from the ENGINEER.

Traffic control and protection will be paid for at the contract lump sum price for TRAFFIC CONTROL AND PROTECTION, (SPECIAL) and no extra compensation will be allowed. The lump sum price shall include the cost of furnishing, installing, maintaining, relocating, and removing traffic control devices, warning signs, red flags, flagmen, and lights as required herein to ensure the safety of the public and the convenience of traffic.

8. STATUS OF UTILITIES

The following entities have utility facilities within/directly adjacent to the construction limits of this project:

Utility Entity	Anticipated Conflict(s)	Estimated Date of Completed Relocation
Communications, Telephone, TV		
Grafton Technologies, Inc. 301 Commerce Blvd. Jerseyville, IL 62052 Ph: (618) 639-4841	Minor Conflicts	Prior to or During Construction
Frontier Communications 255 N. Broad St. Carlinville, IL 62626 (618) 854-2025	Minor Conflicts	Prior to or During Construction
New Wave Communications 1176 E 1500 North Road Taylorville, IL 62568 (217) 287-7992	Minor Conflicts	Prior to or During Construction
Electric & Gas		
Ameren – CIPS 700 Jersey St. Quincy, IL 62306 (217) 221-0850	Utility Pole Relocation	During Construction
Potable Water & Sanitary Sewer		
America Water 300 North Water Works Drive Belleville, IL 62223 800-422-2782	Water Main & Sanitary Sewer Conflicts	During Construction

The above list represents the best information determined through field surveys performed after joint utility location requests. This information has been included only for the convenience of the bidder.

All utility adjustments to accommodate the proposed improvements shall be completed in accordance with Article 105.07 of the Standard Specifications for Road and Bridge Construction. The CONTRACTOR shall coordinate his operations with the on-site utility entities to minimize delays in the construction of the project. If any utility adjustments have not been completed when required by the CONTRACTOR'S operations, the CONTRACTOR should notify the ENGINEER in writing. An extension of time may be granted to the extent that the CONTRACTOR'S operations were affected if it is deemed that sufficient notification was provided by the CONTRACTOR.

The CONTRACTOR shall notify utility owners when construction operations will impact a utility and cooperate with the utility owner(s) on the protection, relocation, replacement, and/or removal of their facilities in accordance with Article 107.20 of the Standard Specifications for Road and Bridge Construction.

9. JOINT UTILITY LOCATING INFORMATION FOR EXCAVATORS (J.U.L.I.E.)

All Joint Utility Locating (J.U.L.I.E.) work shall be executed in accordance with Article 107.31 of the Standard Specifications for Road and Bridge Construction with the following exceptions:

- The CONTRACTOR shall notify the Engineer, in writing, 48 (forty-eight) hours prior to commencing excavation at any specific location;
- The CONTRACTOR shall stake locations of proposed storm sewers, signs, light foundations, signal foundations, structures, etc. to satisfy all prior notification requirements for utility companies and the Engineer;
- The CONTRACTOR shall notify the utility owner of any location marker destruction and shall bear the costs of remarking the facilities at his/her expense.

The CONTRACTOR shall maintain in operating condition all utilities encountered in this work and be entirely responsible for all damage to properly located water pipes, gas lines, electrical conduits, existing drains or sewers, poles carrying currents, telephone or telegraph lines, cable lines, culverts, utility appurtenances, or other utility services of any kind met with during the prosecution of the work, whether on public or private property. Any damage to existing utilities resulting from contractor negligence during construction of these proposed improvements shall be repaired to the satisfaction of the owner of the utility at the CONTRACTOR'S expense, whether or not said utilities are shown on the drawings. Existing utilities may be relocated with the approval of the owner of the utility to clear the proposed improvement.

The CONTRACTOR, however, shall be solely responsible for the location of the utilities. The utilities shown on the plans are for informational purposes only and the City of Jerseyville and the ENGINEER do not imply that the information is complete.

Any unknown field drainage tiles or storm sewers interfered with by the construction of the improvement shall be rerouted around the improvement in such a way as to maintain the drainage of areas upstream and downstream of the improvements; any such work shall be approved by the ENGINEER and shall be done by the CONTRACTOR as per Article 109.04 of the Standard

Specifications for Road and Bridge Construction.

Compliance with this special provision shall be considered inclusive to this contract; no additional compensation will be provided.

10. TREE REMOVAL

All trees, saplings, and bushes shall be removed and disposed of pursuant to Section 201 of the Standard Specifications for Road and Bridge Construction, except as modified herein.

All trees, bushes or saplings that are within the project area shall be removed to a depth of 12" below the proposed finish grade.

The CONTRACTOR shall be required to trim or prune any branches that interfere with the free and unobstructed use of his equipment per said Section 201; however the seasonal limitations on pruning shall not apply. Additionally, no special care such as fertilization, supplemental watering, and pruning to compensate for root pruning will be required.

All materials shall be removed from the construction site and disposed of per Article 202.03. Burning will not be allowed.

All measurements and payment for work required by this Special Provision shall be at a lump sum price as shown on the bid form.

11. FURNISHED EXCAVATION (TOP SOIL)

The areas that will be disturbed by the CONTRACTOR and will not be paved as part of the project shall have the soil in the landscaping areas level with the top of curb or the edge of sidewalk. The soil for these landscaping areas shall be furnished by the CONTRACTOR and shall be completed per Section 204 of the Standard Specifications for Road and Bridge Construction. The top 6" of the landscaping areas shall be top soil, but remaining soil below the top 6" can be clean fill that is suitable for a landscaping area. Suitable fill material shall be placed as detailed on the plans or directed by the ENGINEER. The area shall be fine graded after all the fill soil has been placed in the landscaping area. Measurement for payment and the basis of payment shall be on a cubic yard basis as shown on the bid form.

12. PORTLAND CEMENT CONCRETE PAVEMENT – 7 INCH

All Portland Cement Concrete (PCC) roadways and driveways shall be 7" PCC per Section 420 of the Standard Specifications for Road and Bridge Construction. The PCC shall meet the requirements of Class PV in Section 1020 of said Standard Specifications.

All work required by this Special Provision shall be in accordance with Section 420 of the Standard Specifications for Road and Bridge Construction, including the measurement and payment of the PORTLAND CEMENT CONCRETE PAVEMENT – 7 inch.

13. PAVEMENT AND CURB REMOVAL

All pavement, sidewalk, and curbs to be removed as part of the project shall be saw cut in accordance with Article 440.03 of the Standard Specifications for Road and Bridge Construction. All work required by this Special Provision shall be in accordance with Section 440 of said Standard Specifications including the disposal of materials, measurement for payment and basis of payment.

14. PORTLAND CEMENT CONCRETE GUTTER

This work shall consist of construction of a concrete gutter in accordance with Section 606 of the Standard Specifications and the details shown on the plans.

Basis of Payment: This work will be paid for at the contract unit price per foot for PORTLAND CEMENT CONCRETE GUTTER and shall include labor, material, and equipment.

15. CONSTRUCTION LAYOUT

The CONTRACTOR shall furnish and place construction layout stakes for this project. The ENGINEER will provide adequate reference points and benchmarks as shown on the plans. The CONTRACTOR shall provide field labor, equipment, and material to set all stakes for this project which are needed to establish reference points for the various structures including offset stakes. The CONTRACTOR'S work may require setting additional horizontal or vertical control such that the structures may be staked.

The CONTRACTOR shall be responsible for having the finished work conform to the lines, grades, elevations and dimensions as detailed on the plans. Any inspection or checking of the CONTRACTOR'S layout by the ENGINEER and any acceptance of any part or all of it shall not relieve the CONTRACTOR of his responsibility to set the various improvements at the proper grade, location and elevation.

Upon execution of the construction contract, the ENGINEER will verify, re-set or otherwise provide CONTRACTOR with sufficient horizontal and vertical control that checks with the information shown on the plans. Each point shall be visible from the next point. These points will be identified to the CONTRACTOR. The ENGINEER will accept responsibility for the initial accuracy of the control points. The CONTRACTOR shall be responsible to maintain these control points and to set and maintain others should the originals be disturbed. The CONTRACTOR shall provide to the ENGINEER with sufficient stakes in close proximity such that adequate checking of construction operations for proper line and grade can be completed during construction.

All work shall be according to normally accepted self-checking surveying practices. Field notes shall be kept in a neat, orderly and accepted form in a standard survey field book. Copies of the field notes shall be provided to the ENGINEER upon request of same.

All work, equipment, and material required by this Special Provision shall be paid for at the contract lump sum price for CONSTRUCTION LAYOUT.

16. REMOVE AND RESET EXISTING SIGNS

This item of work shall consist of furnishing all labor, material, and equipment necessary to remove and stockpile all existing traffic signs, and to re-set the signs in accordance with Article 107.25 of the Standard Specifications for Road and Bridge Construction, Highway Standard 720006, and all applicable statutes outlined in the Manual on Uniform Traffic Control Devices for Streets and Highways.

The CONTRACTOR will be held responsible for the damage or destruction of property of any degree resulting from neglect, misconduct, or failure to use satisfactory materials to complete the work. This responsibility shall not be released until all existing signs, are reset and a site inspection indicates that the work complies with all applicable portions of the above listed documents.

If it is deemed by the ENGINEER that any signs/sign supports have been damaged or destroyed due to circumstances beyond the CONTRACTOR'S control, the signs/sign supports shall be replaced in accordance with Sections 1090 thru 1093 of the Standard Specifications for Road and Bridge Construction. Payment for signs/sign supports damaged due to circumstances beyond the CONTRACTOR'S control shall be paid for according to Article 109.04 of the Standard Specifications for Road and Bridge Construction.

Contrary to Article 107.25, all materials, labor, and equipment costs to remove and reset the sign panels and sign panel assemblies shall be included in the contract unit price per each under the heading of REMOVE AND RESET EXISTING SIGNS.

17. REMOVE EXISTING SIGNS

This item of work shall consist of furnishing all labor, material, and equipment necessary to remove and delivery existing signs that will not be reset to the City of Jerseyville Street Shed. If the signs are damaged and unusable, then the CONTRACTOR shall dispose of the sign and post.

All materials, labor, and equipment costs to remove the sign panels and sign panel assemblies shall be included in the contract unit price per each under the heading of REMOVE EXISTING SIGNS.

18. NEW SIGNING

This item of work shall consist of furnishing all labor, material, and equipment necessary to install the signs in accordance with Article 107.25 of the Standard Specifications for Road and Bridge Construction, Highway Standard 720006, and all applicable statutes outlined in the Manual on Uniform Traffic Control Devices for Streets and Highways. The sign post and hardware shall be included

All material, labor, and equipment costs to install the sign panels and sign panel assemblies shall be included in the contract unit price per each under the heading of NEW SIGNING.

19. AGGREGATE BASE COURSE, CA-6

This work shall be in accordance with Section 351 of the Standard Specifications, except that CA-6 aggregate shall be used as shown on the detail in the plans.

Basis of Payment: This work will be paid for at the contract unit price per ton for AGGREGATE BASE COURSE, CA-6.

20. DUMPSTER ENCLOSURE

The dumpster enclosure shall consist of a design-build solution utilizing standard commercial brick walls with a decorative capstone, with architectural gates, 8' in height, and area dimensions as shown on the plans, to comprise a complete and working system. Brick shall be queen size (2-3/4"H x 7-5/8"L x 3"D), General Shale style LWQ Old Indiana Tudor, from Richards Brick (contact Melanie Gray, 618-656-0230, mgray@richardsbrick.com), with final style/color to be selected by OWNER prior to construction. Gates shall be 8' in height, Muir Woods style Covrit ToughGate as manufactured by Cityscapes Architectural Innovations (contact Austin Duong, 614-850-2542 or aduong@cityscapesinc.com), and the following openings – 2 @ 8' wide (double-swing, with City of Jerseyville graphic logo added), 2 @ 6' wide (double-swing), and 2 @ 3' wide (both single-swing), with final locations to be selected by the OWNER prior to construction.

All design, labor, equipment, and material costs required to install the items as outlined in this Special Provision, shall be paid for at the lump sum contract unit price for DUMPSTER ENCLOSURE.

21. INCIDENTAL HOT-MIX ASPHALT SURFACING

All bituminous roadways disturbed by the CONTRACTOR shall be repaired with six (6) inches of Hot Mix Asphalt (HMA) per Section 408 of the Standard Specifications for Road and Bridge Construction. The asphalt shall meet the requirements of Section 1030 of said Standard Specifications. It shall contain a PC 64-22 grade of asphalt, using a mixture composition of IL 12.5 (or 9.5) with mixture C aggregate.

All prepared aggregate bases shall be primed with MC-30 at a uniform rate of 0.25 pounds per square foot. The prime shall cure at least twenty four (24) hours prior to placing the HMA. The affected areas may be closed to traffic once the base is prepared; provided the HMA is placed the following day, so prime aggregate should not be necessary. A tandem or vibratory roller will be required to compact the HMA. The HMA may be placed in the repair areas by hand; however two (2) lifts will be required. The first lift shall cool to the satisfaction of the ENGINEER prior to the final lift being placed.

The preparation and priming of the base shall not be measured for payment, but incidental to the cost of repairing the roadway. All other work required by this Special Provision shall be in accordance with Section 408 of the Standard Specifications for Road and Bridge Construction, including the measurement and payment of the INCIDENTAL HOT-MIX ASPHALT SURFACING

22. PORTLAND CEMENT CONCRETE SIDEWALK

All Portland Cement Concrete (PCC) sidewalk shall be 4" of PCC per Section 424 of the Standard Specifications for Road and Bridge Construction. The PCC shall meet the requirements of Class PV in Section 1020 of said Standard Specifications. At the locations where the sidewalk crosses the entrances or alley the pavement shall be 7" thick and paid for under the pay item Portland cement concrete pavement – 7 inch. All tapers, curb ramps, sidewalk transition curbs at curb ramps shall be paid for at the square foot unit price of the

PORTLAND CEMENT CONCRETE SIDEWALK.

All work required by this Special Provision shall be in accordance with Section 424 of the Standard Specifications for Road and Bridge Construction. The measurement and payment of the PORTLAND CEMENT CONCRETE SIDEWALK shall be in square foot (sf) as shown on the bid form.

23. RESEAL EXISTING HOT-MIX ASPHALT PARKING LOT

The HMA parking lot on the east side of Jefferson St. will be resealed as part of the parking lot improvement project. The pavement surface shall be cleaned and free of any oil, dirt, or other debris that will prevent the seal coat material from adhering to the existing pavement. The reseat material shall be approved by the OWNER and be spread at the manufacturers recommended application rate.

All surface cleaning, preparation, and application resealing materials shall be included in the measurement and payment of the RESEAL EXISTING HOT-MIX ASPHALT PARKING LOT.

24. ELECTRICAL - LIGHTING

The electrical work shall consist of a design-build solution from the CONTRACTOR for decorative lighting units/poles/foundations/fixtures/internal wiring, convenience receptacles, electrical panel/lighting controller, electrical service entrance/metering (to be coordinated with Ameren Illinois), conduit installation, and related appurtenances, as shown generally on the plans, to comprise a complete and working system, and in accordance with NEC and all local codes. All components, anchor bolts, and foundations shall be designed and installed in accordance with manufacturer's recommendations. Lighting fixtures shall be as manufactured by Sternberg Lighting (contact Dave Paul, Lighting Associates, 314-606-6448 or dpaul@laiweb.net), with final style/locations to be selected by the OWNER prior to construction.

All design, labor, equipment, and material costs required to design/install the items as outlined in this Special Provision, shall be paid for at the lump sum contract unit price for ELECTRICAL - LIGHTING.

25. PLUMBING - IRRIGATION

The plumbing work shall consist of a design-build solution from the CONTRACTOR for a landscape irrigation system to generally irrigate all grass-covered areas, exterior hose bib, water service/metering (to be coordinated with Illinois American Water Company), piping installation, and related appurtenances, as shown generally on the plans, to comprise a complete and working system, and in accordance with Illinois State Plumbing Code and all local codes. All components, controllers, valves, fittings, sprinkler heads/piping, and backflow preventers shall be designed and installed in accordance with manufacturer's recommendations. Final style/locations to be selected by the OWNER prior to construction.

All design, labor, equipment, and material costs required to design/install the items as outlined in this Special Provision, shall be paid for at the lump sum contract unit price for PLUMBING - IRRIGATION.

26. STAMPED PORTLAND CEMENT CONCRETE PAVEMENT

All Stamped Portland Cement Concrete (PCC) pavement shall be 4" of PCC per Section 424 of the Standard Specifications for Road and Bridge Construction. The PCC shall meet the requirements of Class PV in Section 1020 of said Standard Specifications. The stamped concrete shall be dark grey/charcoal in color and brick design pattern. The city shall approve the color and pattern prior to construction.

All work required by this Special Provision shall be in accordance with Section 424 of the Standard Specifications for Road and Bridge Construction. The measurement and payment of the STAMPED PORTLAND CEMENT CONCRETE PAVEMENT shall be in square foot (sf) as shown on the bid form.

P:\THeas\wherea\clients\00140 - jerseyville, city\337 - downtown parking lot\east.dwg - jerseyville, city\337 - downtown parking lot\east.dwg
PLOTED: 3/11/2021 @ 10:56:06 PM BY lott, adam

GENERAL NOTES

1.

ALL GRADING, DRAINAGE, PAVING, AND SIDEWALK WORK SHALL BE DONE IN ACCORDANCE WITH THE LATEST EDITIONS OF THE IDOT "STANDARD SPECIFICATIONS FOR ROAD AND BRIDGE CONSTRUCTION" AND THE "SUPPLEMENTAL SPECIFICATIONS AND SPECIAL PROVISIONS", HEREINAFTER REFERRED TO AS THE "STANDARD SPECIFICATIONS".
2.

THE CONTRACTOR SHALL BE RESPONSIBLE FOR COMPLYING WITH ALL ADA (AMERICAN DISABILITIES ACT) REQUIREMENTS.
3.

THE CONTRACTOR SHALL CONTACT J.U.L.I.E. AT 1-800-892-0123 PRIOR TO ANY EXCAVATION FOR THE LOCATION OF ANY PIPES, CABLES, LINES, OR MAINS.
4.

UNDERGROUND FACILITIES, STRUCTURES, AND UTILITIES HAVE BEEN PLOTTED FROM AVAILABLE SURVEYS AND RECORDS. THEIR LOCATIONS MUST BE CONSIDERED TO BE APPROXIMATE ONLY. IT IS POSSIBLE THERE MAY BE OTHERS, THE EXISTENCE OF WHICH IS NOT PRESENTLY KNOWN OR SHOWN. IT IS THE CONTRACTOR'S RESPONSIBILITY TO DETERMINE THEIR EXISTENCE AND EXACT LOCATION AND TO AVOID DAMAGE THERETO.
5.

THE CONTRACTOR IS RESPONSIBLE FOR KEEPING SITE CLEAN AND ORDERLY TO THE SATISFACTION OF THE OWNER.
6.

EARTHWORK COMPACTION, PREPARATION OF THE EXISTING GROUND SURFACE PRIOR TO FILLING, AND FILL MATERIAL SHALL BE IN ACCORDANCE WITH SECTION 205 - EMBANKMENT OF THE STANDARD SPECIFICATIONS. EARTH EXCAVATION SHALL BE DONE IN ACCORDANCE WITH SECTION 202 OF THE STANDARD SPECIFICATIONS. NO PAYMENT FOR OVERHAUL WILL BE ALLOWED FOR EXCAVATED MATERIALS MOVED TO OR FROM ANY SOURCE.
7.

ALL EXCESS EXCAVATED EARTH SHALL BE DISPOSED OF BY THE CONTRACTOR UNLESS OTHERWISE SPECIFIED BY THE OWNER.
8.

DEMOLITION OF EXISTING PAVEMENT AND APPURTENANCES SHALL CONFORM TO THE APPLICABLE REQUIREMENT OF SECTION 440 OF THE STANDARD SPECIFICATIONS. WHERE CONSTRUCTION REQUIRES REMOVAL OF A PORTION OF A PAVED SURFACE, THE CONTRACTOR SHALL FIRST MAKE A UNIFORMLY STRAIGHT SAW CUT (FULL DEPTH) BY USE OF A DIAMOND CONCRETE SAW OR EQUIVALENT. THE USE OF PNEUMATIC TOOLS TO MAKE THESE CUTS WILL NOT BE ALLOWED.
9.

THE CONTRACTOR IS RESPONSIBLE FOR ANY ROADWAY PAVEMENT, CURB AND GUTTER, SIDEWALK, AND PARKING LOT PAVEMENT SHOWN TO REMAIN IN PLACE, THAT IS DESTROYED OR DISTURBED AS A RESULT OR THE DEMOLITION OR CONSTRUCTION OF THE IMPROVEMENTS. THE AFFECTED AREAS SHALL BE REPLACED AND/OR RESTORED PENDING OWNER/ENGINEER APPROVAL AND NO ADDITIONAL COMPENSATION WILL BE ALLOWED.
10.

ALL ELEVATIONS SHOWN ARE BASED ON MEAN SEA LEVEL DATUM.
11.

SUBGRADE PREPARATION FOR CONSTRUCTION OF PAVEMENT SHALL BE IN ACCORDANCE WITH SECTION 301 - SUBGRADE PREPARATION OF THE STANDARD SPECIFICATIONS.
12.

ALL TRANSVERSE SAWED PAVEMENT JOINTS MUST EXTEND THROUGH CURBS, AND MUST BE CONTINUOUS ACROSS THE PAVEMENT.
13.

MAXIMUM TRANSVERSE SAWED PAVEMENT JOINTS SPACING SHALL BE FIFTEEN (15') ON CENTER. SAWED JOINTS SHALL BE CONSTRUCTED IN ACCORDANCE WITH EITHER STANDARD BLR NO. 14-12 OF THE STANDARD SPECIFICATIONS OR AS NOTED ON THE PLANS.
14.

P.C. CONCRETE SIDEWALKS SHALL COMPLY WITH SECTION 424 - PORTLAND CEMENT CONCRETE SIDEWALKS IN THE STANDARD SPECIFICATIONS.
15.

ANY RANDOM CRACKING IN THE PCC PAVEMENT SHALL BE SEALED, REMOVED OR OTHERWISE REPAIRED AS DIRECTED BY THE ENGINEER OR OWNER AT NO ADDITIONAL COST.
16.

PCC PAVEMENT SHALL COMPLY WITH SECTION 420 - PORTLAND CEMENT CONCRETE PAVEMENT IN THE STANDARD SPECIFICATIONS.
17.

ALL PCC FOR ROADWAYS & PARKING LOTS SHALL BE CLASS PV WITH A MAXIMUM SLUMP OF 3".
18.

PCC PAVEMENT, SIDEWALK, AND CURB SHALL HAVE A BROOM FINISH.
19.

THE MINIMUM SLOPE ALLOWABLE ON THE PARKING LOT AND SIDEWALK IS 0.5%. THE CONTRACTOR IS RESPONSIBLE TO ENSURE THAT NO PONDING WILL OCCUR ON THE NEW PAVEMENT OR SIDEWALK.
20.

CONSTRUCTION JOINTS ARE REQUIRED WHERE A 30 MINUTE OR GREATER INTERRUPTION OCCURS IN THE PAVING OPERATION.
21.

DOWEL CURBS TO ROADWAY PCC PAVEMENT IF NOT POURED INTEGRALLY WITH THE PAVEMENT WITH #6 REBAR - 24" LONG @ 24" CENTERS.
22.

A PROTECTIVE COATING SHALL BE APPLIED TO ALL PCC PAVEMENTS, CURBS, GUTTERS, AND SIDEWALK.
23.

A SLUMP TEST AND ENTRAINED AIR TEST ARE REQUIRED FOR EACH READY MIX TRUCK.
24.

TWO (2) BEAMS OR TWO (2) CYLINDERS ARE REQUIRED TO BE MADE EACH DAY OF THE PAVING OPERATION OR TWO (2) PER 1,000 SQUARE YARDS, WHICH EVER IS GREATER.
25.

HOT-MIX ASPHALT (HMA) PAVEMENT SHALL COMPLY WITH SECTION 407 - HOT-MIX ASPHALT PAVEMENT (FULL-DEPTH) IN THE STANDARD SPECIFICATIONS.
26.

CONTRACTOR SHALL BE RESPONSIBLE FOR FOLLOWING THE CITY OF JERSEYVILLE AND OTHER APPLICABLE REGULATIONS.
27.

SIDEWALKS SHALL REQUIRE 1/2" EXPANSION JOINT MATERIAL TO BE PLACED AROUND ALL UTILITY POLES, SIGNS, ETC. THAT ARE ENCOUNTERED. IN ADDITION, 3/4" EXPANSION JOINT MATERIAL SHALL BE USED WHERE THE SIDEWALK ABUTS EXISTING SIDEWALKS, BETWEEN DRIVEWAY PAVEMENT AND SIDEWALK, AND BETWEEN SIDEWALK CURB WHERE SIDEWALKS ABUT A CURB, AND BETWEEN PROPOSED PAVEMENT AND EXISTING BUILDING. THE EXPANSION JOINT MATERIAL SHALL BE PREFORMED RUBBERIZED EXPANSION JOINT MATERIAL (REFLEX OR APPROVED EQUAL).
28.

THE CONTRACTOR SHALL BE RESPONSIBLE FOR MAINTAINING THE EXISTING DRAINAGE FLOW PATTERN ADJACENT TO THE PROPOSED ROADWAYS, PARKING LOTS, AND SIDEWALKS. IN ADDITION, THE CONTRACTOR SHALL BE RESPONSIBLE FOR MAINTAINING THE EXISTING DRAINAGE PATTERN BETWEEN EXISTING PAVEMENT AND NEW PAVEMENT. ALL AREAS DEEMED PRONE TO PONDING SHALL BE TAKEN INTO CONSIDERATION AND ELIMINATED. NO PONDING WILL BE PERMITTED.
29.

THE CONTRACTOR SHALL VERIFY THE CURB AND GUTTER ELEVATIONS MATCH EXISTING CONDITIONS ALONG JEFFERSON STREET. ANY ADJUSTMENTS NEEDED TO PREVENT PONDING SHALL BE SUBMITTED TO THE ENGINEER FOR APPROVAL.
30.

ALL AREAS DISTURBED BY THE CONTRACTOR THAT WILL NOT BE PAVED SHALL BE FINE GRADED WITH TOPSOIL (6" DEPTH), THE CITY OF JERSEYVILLE WILL SEED, FERTILIZE, MULCH, AND LANDSCAPE THE DISTURBED AREAS THAT WILL NOT BE PAVED.
31.

UNLESS OTHERWISE DIRECTED BY THE OWNER, PERMANENT SEEDING SHALL BE CLASS 1 LAWN MIXTURE AND SHALL COMPLY WITH THE REQUIREMENTS IN SECTION 250 OF THE STANDARD SPECIFICATIONS FOR SEEDING AND FERTILIZING. ALL AREAS PERMANENTLY SEEDED SHALL BE MULCHED IN ACCORDANCE WITH ARTICLE 251 OF THE STANDARD SPECIFICATIONS AND STABILIZED AS PER METHOD 2, PROCEDURE 1.
32.

THE CONTRACTOR SHALL AT ALL TIMES CONDUCT WORK IN SUCH A MANNER AS TO MINIMIZE HAZARDS TO VEHICULAR OR PEDESTRIAN TRAFFIC. TRAFFIC CONTROLS AND WORK SITE PROTECTION SHALL BE IN ACCORDANCE WITH THE APPLICABLE REQUIREMENTS OF CHAPTER 6 (TRAFFIC CONTROLS FOR HIGHWAY CONSTRUCTION AND MAINTENANCE OPERATIONS) OF THE ILLINOIS MANUAL ON UNIFORM TRAFFIC CONTROL DEVICES FOR STREETS AND HIGHWAYS.
33.

THE CONTRACTOR SHALL PREVENT MUD, CONSTRUCTION MATERIALS, AND DEBRIS ORIGINATING ON THIS SITE FROM MIGRATING ONTO THE ADJACENT PROPERTIES AND ROADWAYS. THE CONTRACTOR SHALL IMMEDIATELY REMOVE ANY MUD OR DEBRIS THAT IS TRACKED, SPILLED, OR MIGRATES ONTO THE ROADWAY SURFACES OR ADJACENT PROPERTIES.
34.

ALL EXISTING SIGNS TO BE RELOCATED SHALL INCLUDE A NEW POST. ALL EXISTING SIGNS WITHIN THE PROJECT AREA SHALL BE REMOVED AND RESET, UNLESS THE SIGN IS NOT LONGER APPLICABLE IN WHICH CASE THE SIGN SHALL BE DELIVERED TO THE CITY OF JERSEYVILLE STREET SHED.
35.

ALL ROOF DRAINS ALONG THE ALLEY SHALL BE ADJUSTED TO MATCH THE NEW PAVEMENT ELEVATION AGAINST THE EXISTING BUILDING. THIS WORK SHALL BE INCIDENTAL TO THE PROJECT COST.
36.

PCC LANDINGS/RAMPS/STOOPS FOR ACCESS TO BUSINESSES ALONG THE ALLEY SHALL BE CLASS PV WITH WOVEN WIRE FABRIC (6X6-W2.9XW2.9).
37.

THE CONTRACTOR SHALL COORDINATE WITH THE CITY AND AMEREN ON THE PROPOSED LIGHT POLES TO BE INSTALLED BY AMEREN DURING CONSTRUCTION OF THE PROPOSED IMPROVEMENTS.
38.

THE CONTRACTOR SHALL STAGE THE PROJECT SO ONLY ONE PARKING LOT IS UNDER CONSTRUCTION AT A TIME. THE PARKING LOT AND OTHER IMPROVEMENTS ON THE WEST SIDE OF JEFFERSON STREET SHALL BE COMPLETED FIRST, IF BOTH PARKING LOTS (BASE BID & ALTERNATE #1) ARE INCLUDED IN THE PROJECT CONTRACT.

SUMMARY OF QUANTITIES				
SP	ITEM NUMBER	ITEM	UNIT	QUANTITY
BASE BID "A" PCC PARKING LOT OPTION				
*	1	FURNISHED EXCAVATION (TOP SOIL)	CY	150
*	2	PORTLAND CEMENT CONCRETE PAVEMENT - 7 INCH	SQ YD	2880
*	3	AGGREGATE BASE COURSE, CA-6	TON	800
*	4	INCIDENTAL HOT-MIX ASPHALT SURFACING	TON	50
*	5	PORTLAND CEMENT CONCRETE SIDEWALK	SQ FT	3200
*	6	STAMPED PORTLAND CEMENT CONCRETE PAVEMENT	SQ FT	2200
	7	PORTLAND CEMENT CONCRETE CURB	FOOT	720
	8	PORTLAND CEMENT CONCRETE CURB & GUTTER - B6.18	FOOT	660
*	9	PORTLAND CEMENT CONCRETE GUTTER	FOOT	262
	10	DETECTABLE WARNINGS	SQ FT	154
*	11	PAVEMENT AND CURB REMOVAL	SQ YD	2170
*	12	DUMPSTER ENCLOSURE	L SUM	1
*	13	REMOVE AND RESET EXISTING SIGNS	EACH	5
*	14	REMOVE EXISTING SIGNS	EACH	2
*	15	NEW SIGNING	EACH	2
	16	4" PAVEMENT MARKING	FOOT	4200
	17	12" PAVEMENT MARKING	FOOT	1000
	18	PAVEMENT MARKING SYMBOL	SQ FT	75
	19	MOBILIZATION	L SUM	1
*	20	CONSTRUCTION LAYOUT	L SUM	1
*	21	TRAFFIC CONTROL AND PROTECTION, (SPECIAL)	L SUM	1

BASE BID "B" HMA PARKING LOT OPTION				
*	1	FURNISHED EXCAVATION (TOP SOIL)	CY	150
*	2	PORTLAND CEMENT CONCRETE PAVEMENT - 7 INCH	SQ YD	1220
	3	HOT-MIX ASPHALT SURFACE COURSE (MIX C N50)	TON	150
	4	HOT-MIX ASPHALT BASE COURSE (MIX C N50)	TON	250
*	5	AGGREGATE BASE COURSE, CA-6	TON	1200
*	6	INCIDENTAL HOT-MIX ASPHALT SURFACING	TON	50
*	7	PORTLAND CEMENT CONCRETE SIDEWALK	SQ FT	3200
*	8	STAMPED PORTLAND CEMENT CONCRETE PAVEMENT	SQ FT	2200
	8	PORTLAND CEMENT CONCRETE CURB	FOOT	720
	9	PORTLAND CEMENT CONCRETE CURB & GUTTER - B6.18	FOOT	660
*	10	PORTLAND CEMENT CONCRETE GUTTER	FOOT	262
	11	DETECTABLE WARNINGS	SQ FT	154
*	12	PAVEMENT AND CURB REMOVAL	SQ YD	2170
*	13	DUMPSTER ENCLOSURE	L SUM	1
*	14	REMOVE AND RESET EXISTING SIGNS	EACH	5
*	15	REMOVE EXISTING SIGNS	EACH	2
*	16	NEW SIGNING	EACH	2
	17	4" PAVEMENT MARKING	FOOT	4200
	18	12" PAVEMENT MARKING	FOOT	1000
	19	PAVEMENT MARKING SYMBOL	SQ FT	75
	20	MOBILIZATION	L SUM	1
*	21	CONSTRUCTION LAYOUT	L SUM	1
*	22	TRAFFIC CONTROL AND PROTECTION, (SPECIAL)	L SUM	1

ALTERNATE BID #1 - EAST PARKING LOT				
*	1	TREE REMOVAL	L SUM	1
*	2	FURNISHED EXCAVATION (TOP SOIL)	CY	250
*	3	PORTLAND CEMENT CONCRETE PAVEMENT - 7 INCH	SQ YD	40
	4	HOT-MIX ASPHALT SURFACE COURSE (MIX C N50)	TON	10
	5	HOT-MIX ASPHALT BASE COURSE (MIX C N50)	TON	15
*	6	AGGREGATE BASE COURSE, CA-6	TON	400
*	7	INCIDENTAL HOT-MIX ASPHALT SURFACING	TON	60
*	8	PORTLAND CEMENT CONCRETE SIDEWALK	SQ FT	2184
*	9	STAMPED PORTLAND CEMENT CONCRETE PAVEMENT	SQ FT	280
	9	PORTLAND CEMENT CONCRETE CURB & GUTTER - B6.18	FOOT	1332
*	10	RESEAL EXISTING HOT-MIX ASPHALT PARKING LOT	SY	1260
	11	DETECTABLE WARNINGS	SQ FT	100
*	12	PAVEMENT AND CURB REMOVAL	SQ YD	1435
*	13	REMOVE AND RESET EXISTING SIGNS	EACH	5
	14	4" PAVEMENT MARKING	FOOT	1000
	15	PAVEMENT MARKING SYMBOL	SQ FT	25
*	16	ELECTRICAL - LIGHTING	LS	1
*	17	PLUMBING - IRRIGATION	LS	1
	18	MOBILIZATION	L SUM	1
*	19	CONSTRUCTION LAYOUT	L SUM	1
*	20	TRAFFIC CONTROL AND PROTECTION, (SPECIAL)	L SUM	1

* SPECIAL PROVISION PROVIDED

HENEGHAN & ASSOCIATES, P.C.



ENGINEERS-SURVEYORS

www.haengr.com

DESIGN FIRM NUMBERS:
IL: 184-002692, EXPIRES APRIL 30, 2021
MO: 001310, EXPIRES DECEMBER 31, 2021

1004 STATE HWY. 16
JERSEYVILLE, IL 62052
P: (618) 498-6418
F: (618) 498-6410

838 EAST McCORD STREET
CENTRALIA, IL 62801
P: (618) 533-6625
F: (618) 533-6652

310A VISION DRIVE
COLUMBIA, IL 62236
P: (618) 281-8133
F: (618) 281-8290

1929 RICHARDSON ROAD
ARNOLD, MO 63010
P: (636) 464-3610
F: (636) 464-2059

REVISIONS

REVISED SOQ

DATE

3-11-21

NO.

1

GENERAL NOTES
EAST PEARL STREET PARKING LOT
IMPROVEMENTS

CITY OF JERSEYVILLE
JERSEY COUNTY, ILLINOIS

DRAWN BY: EAS
CHECKED BY: CAW
APPROVED BY: CAW

HORIZONTAL SCALE:
N/A

VERTICAL SCALE:
N/A

PROJECT NO.
00140-337

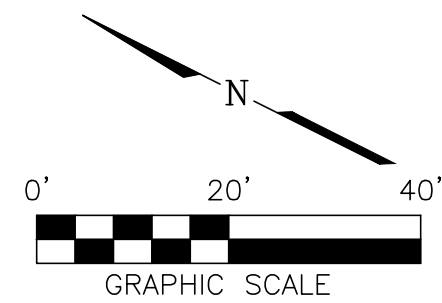
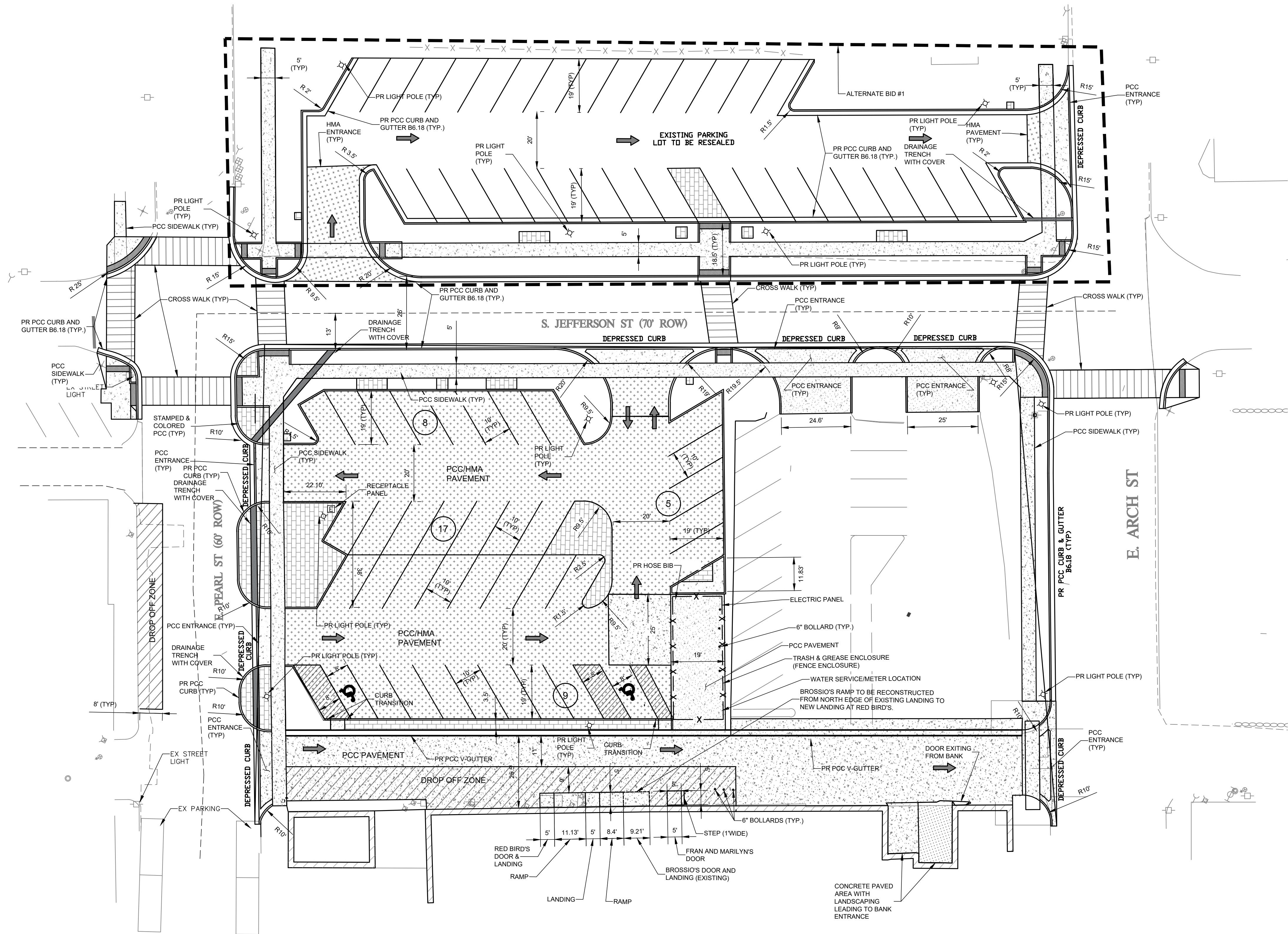
DATE:
02/24/21

SHEET NO.

3

3 OF 9 SHEETS

\\nas01\shared\clients\00140 - jerseyville, city\337 - downtown parking lot\cad\dwg\civil\140-337 site - revised.dwg
PLOTED: 3/11/2021 9:50:40 AM BY: jrt, adm



HENEGHAN &
ASSOCIATES, P.C.



ENGINEERS-SURVEYORS
www.haengr.com

DESIGN FIRM NUMBERS:
IL: 184-002692, EXPIRES APRIL 30, 2021
MO: 001310, EXPIRES DECEMBER 31, 2020

1004 STATE HWY. 16
JERSEYVILLE, IL 62052
P: (618) 498-6418
F: (618) 498-6410

838 EAST McCORD STREET
CENTRALIA, IL 62801
P: (618) 533-6525
F: (618) 533-6652

310A VISION DRIVE
COLUMBIA, IL 62236
P: (618) 281-8133
F: (618) 281-8290

1929 RICHARDSON ROAD
ARNOLD, MO 63010
P: (636) 464-3610
F: (636) 464-2059

NO.	DATE	REVISIONS	ADDENDUM #1 CHANGES
1	3-11-21		

SITE PLAN
EAST PEARL STREET PARKING LOT
IMPROVEMENTS

CITY OF JERSEYVILLE
JERSEY COUNTY, ILLINOIS

DRAWN BY: EAS
CHECKED BY: CAW
APPROVED BY: JAL

HORIZONTAL SCALE:
1"=20'

VERTICAL SCALE:
N/A

PROJECT NO.
00140-337

DATE:
02/24/2021

SHEET NO.
5

5 OF 9 SHEETS

NO.	DATE	REVISIONS
1	3-11-21	ADDENDUM #1 CHANGES

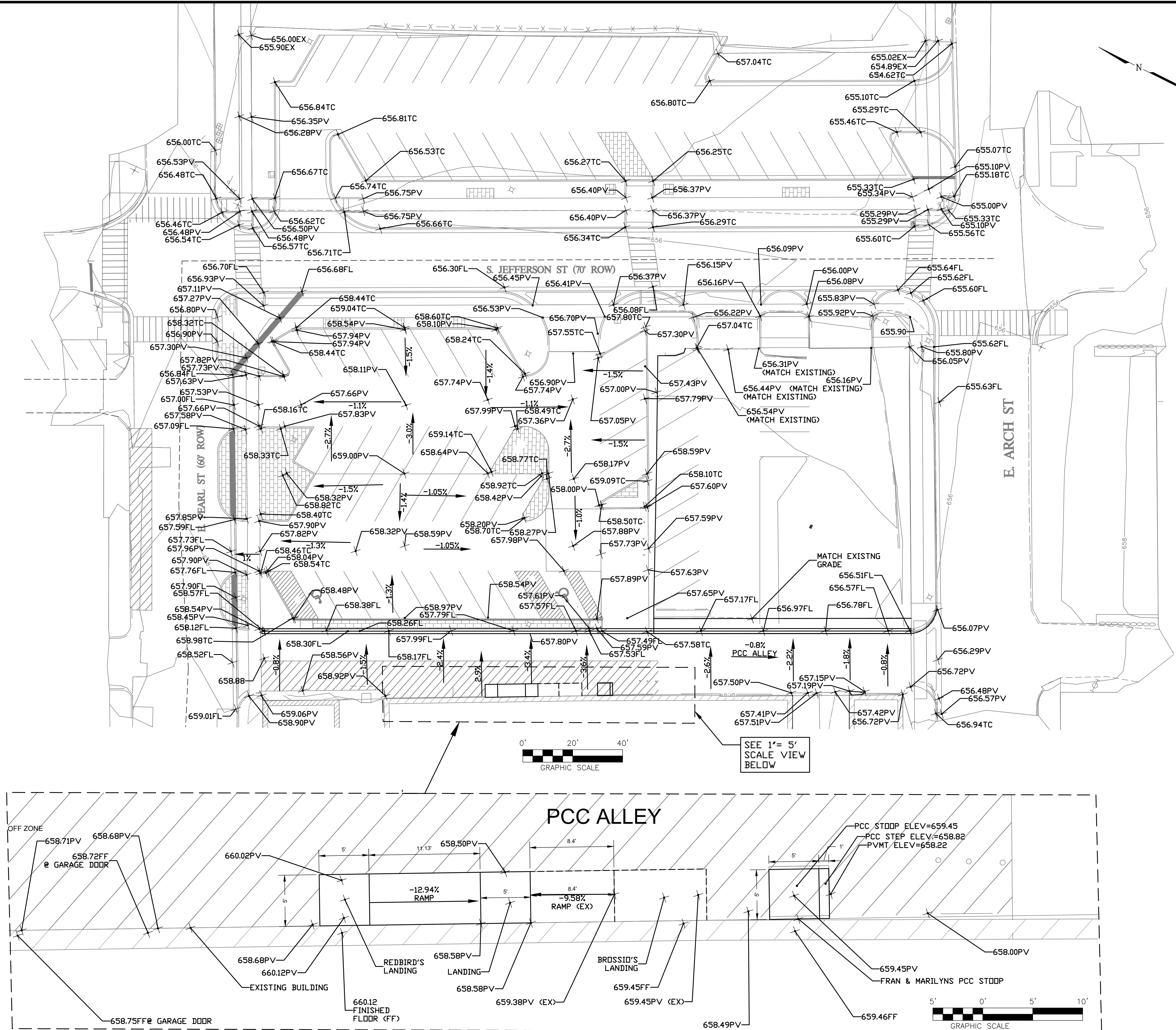
CITY OF JERSEYVILLE
JERSEY COUNTY, ILLINOIS

HORIZONTAL SCALE:
1"=20'

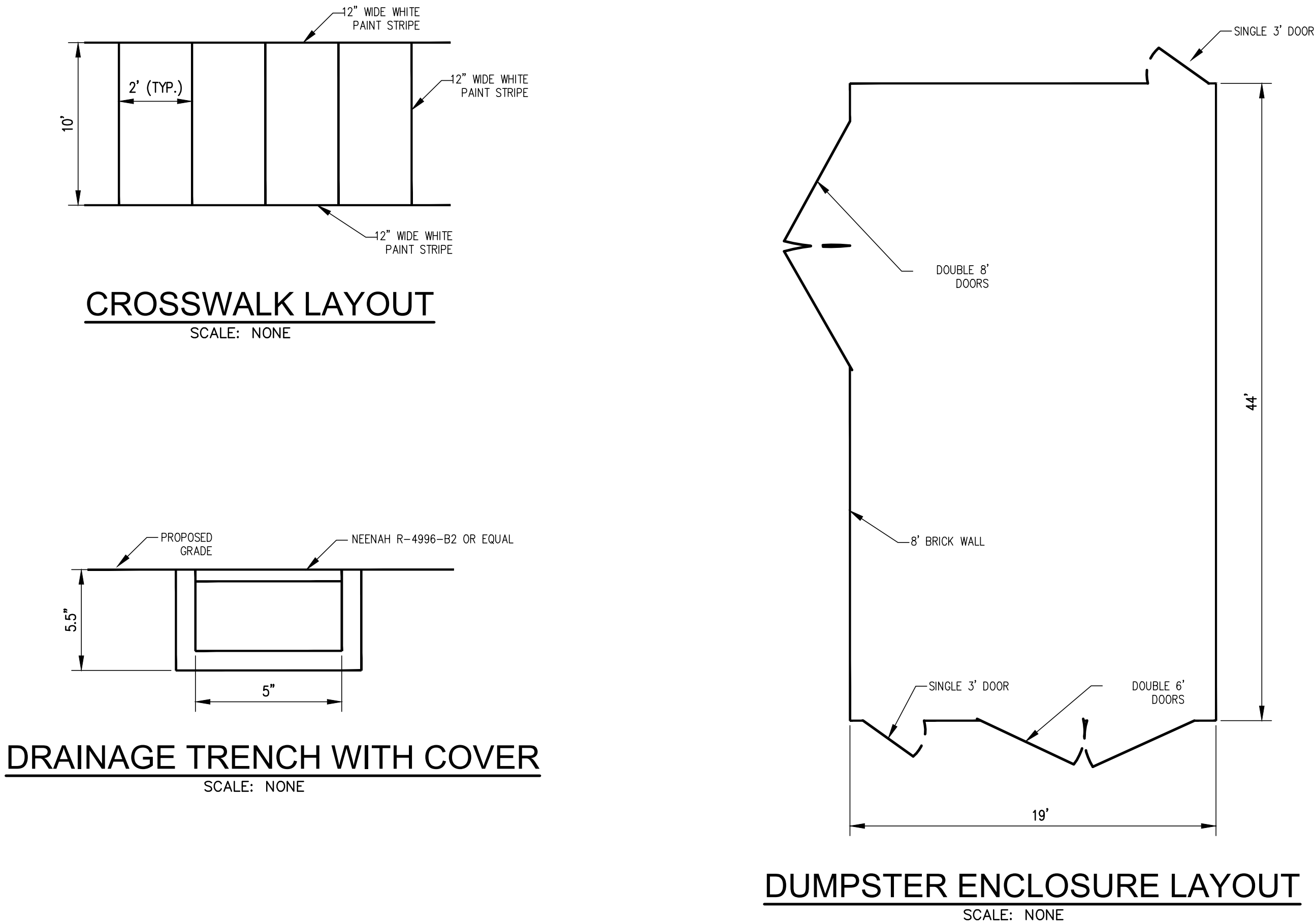
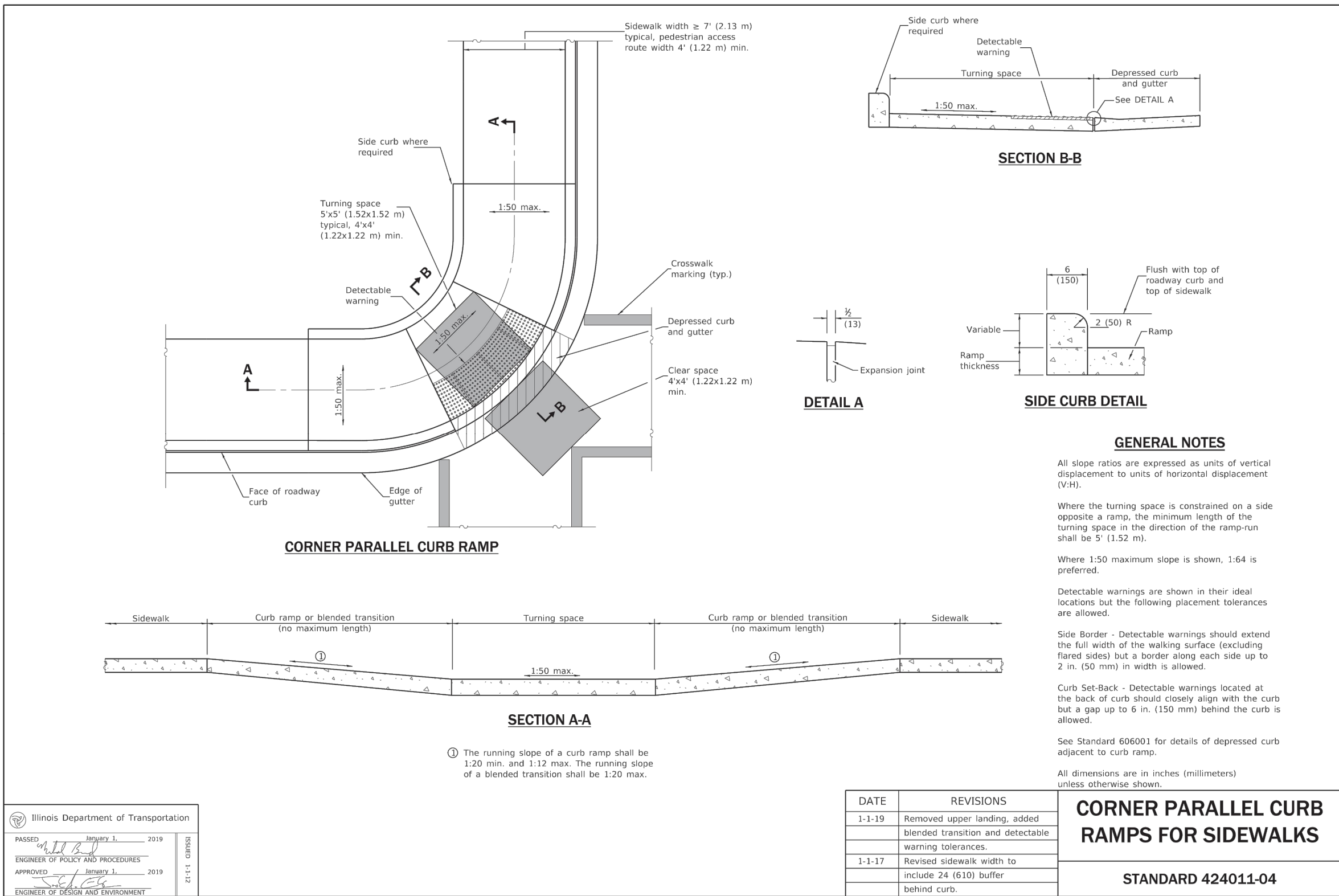
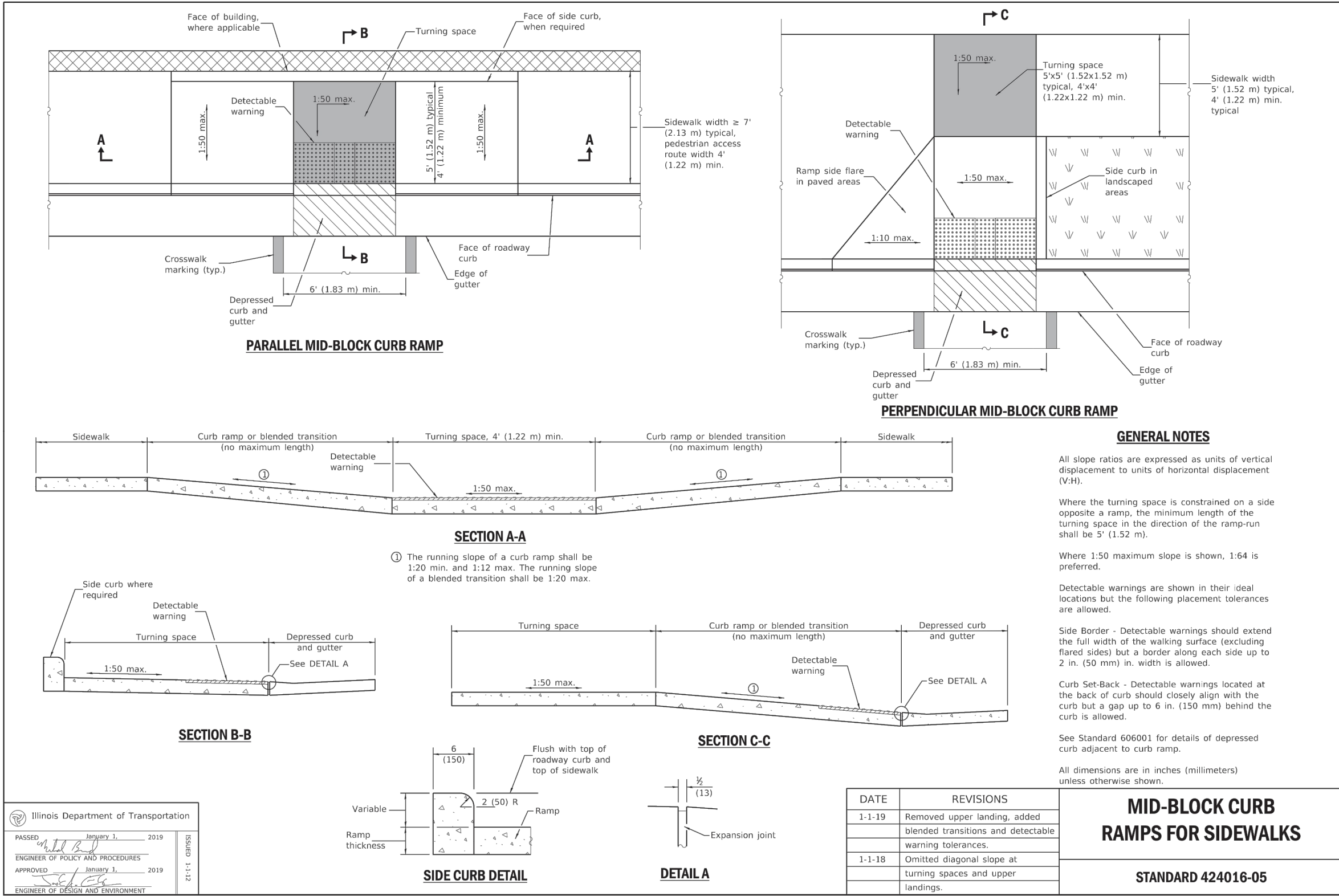
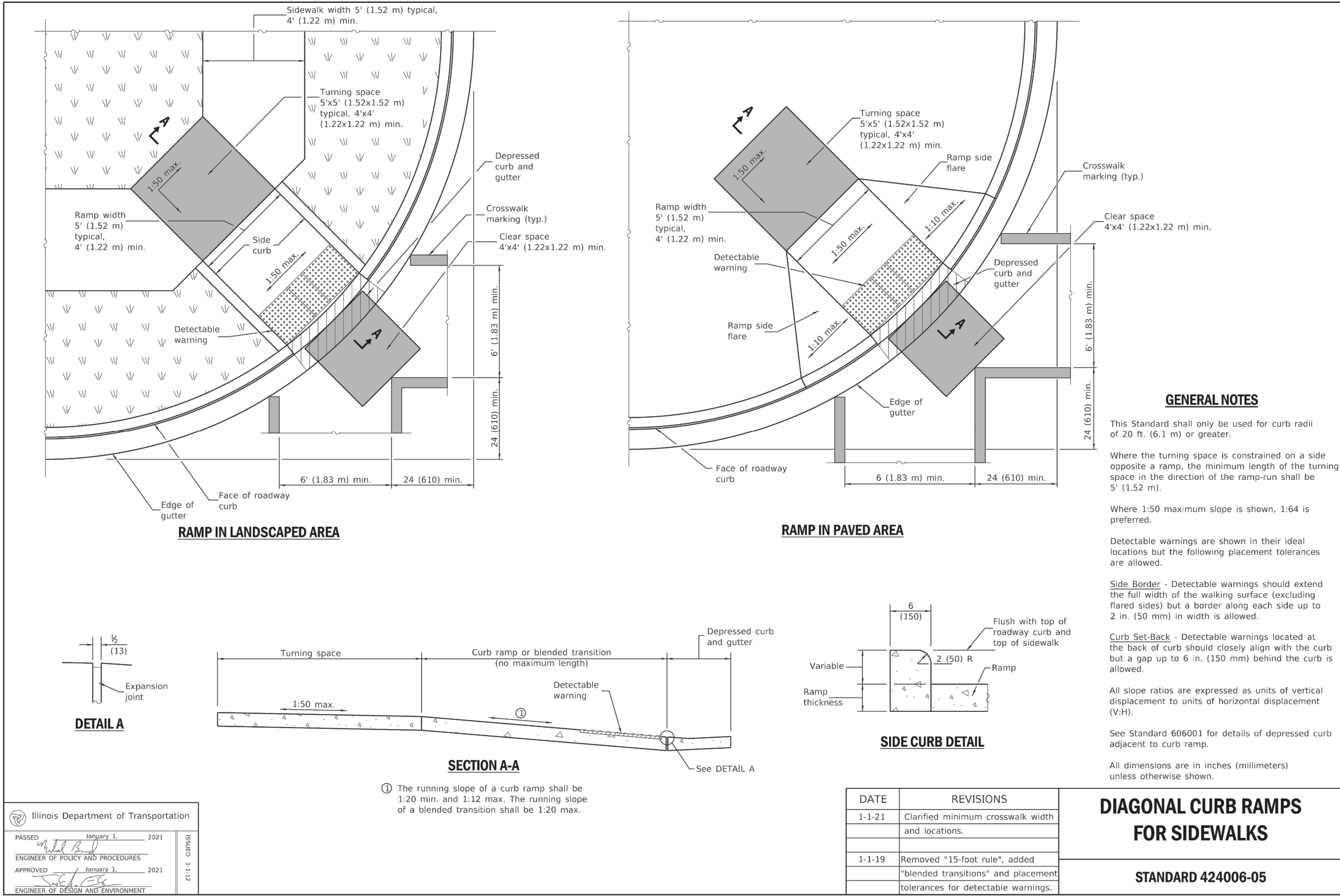
PROJECT NO.
00140-337

SHEET NO. 6

PATH=s:\shared\clients\00140 - jerseyville, city\337 - downtown parking lot\cad\dwg\civil\140-337 grading - revised.dwg
PLOTTED: 3/11/2021 @ 8:58:44 PM BY lott, adam



PATH=c:\users\j\documents\00140 - jerseyville, city\337 - downtown parking lot\cad\dwg\city\jerseyville parking lot.dwg
PLOTED: 3/11/2021 8:54:03 PM BY: lott, adam



HENEGHAN & ASSOCIATES, P.C.

HA
ENGINEERS-SURVEYORS
www.haengr.com

DESIGN FIRM NUMBERS:
IL: 184-002692, EXPIRES APRIL 30, 2021
MO: 001310, EXPIRES DECEMBER 31, 2021

1004 STATE HWY. 16
JERSEYVILLE, IL 62052
P: (618) 498-6418
F: (618) 498-6410

838 EAST McCORD STREET
CENTRALIA, IL 62801
P: (618) 533-6625
F: (618) 533-6652

310A VISION DRIVE
COLUMBIA, IL 62236
P: (618) 281-8133
F: (618) 281-8290

1929 RICHARDSON ROAD
ARNOLD, MO 63010
P: (636) 464-3610
F: (636) 464-2059

REVISIONS	DATE	NO.	3-11-21	ADDITIONAL DETAILS
1				

DETAILS
EAST PEARL STREET PARKING LOT
IMPROVEMENTS
CITY OF JERSEYVILLE
JERSEY COUNTY, ILLINOIS

DRAWN BY: EAS
CHECKED BY: CAW
APPROVED BY: CAW

HORIZONTAL SCALE:
N/A

VERTICAL SCALE:
N/A

PROJECT NO.
00140-337

DATE:
02/24/21

SHEET NO.
9

9 OF 9 SHEETS