



HENEGHAN AND ASSOCIATES, P.C.

CIVIL ENGINEERS • LAND SURVEYORS

WWW.HAENGR.COM

Since 1986

Addendum No. 1

for

Pleasant Street Drainage Improvements – Phase 1

For City of Jerseyville

Jerseyville, Illinois

H&A File No. 00140-331

February 12, 2021

The Contract Documents prepared by Heneghan & Associates, P.C. for the Pleasant Street Drainage Improvements – Phase 1 for the City of Jerseyville, Illinois, are hereby amended or clarified as follows:

GENERAL

Attached, find the Pre-Bid meeting Minutes and attendance sheet from the Pre-Bid meeting held February 11, 2021, 10:00 am at The Feyerabend Building in Jerseyville, Illinois. The Minutes are made a part of this Addendum, and the items stated in the Minutes shall be followed.

PROJECT SPECIFICATIONS

Changes/additions/clarifications to the project specifications are as listed below:

Bid Form: A REVISED BID FORM is included with the addendum, only bids submitted on this REVISED BID FORM will be accepted.

Special Provisions:

1. The CONTRACTOR shall keep the roadways clean and free of dirt and mud during construction of the project. This shall be considered incidental to the project cost.
2. Add special provision for abandonment of the existing 24" VCP storm sewer.

ABANDON EXISTING STORM SEWER

Construction of the proposed improvements will require the abandonment of a portion of the existing 24" VCP storm sewer that will remain in place, as shown on the project construction plans, between Exchange St. and the detention basin area. The storm sewer to be abandoned in place shall be filled with controlled low-strength material. The controlled low-strength material shall be in accordance with section 593 of the standard specifications for Road and Bridge Construction. Any temporary forms that are needed to properly fill the storm sewer with controlled low strength material shall be incidental to the Abandon Existing Storm Sewer pay item.

The abandonment of the existing storm sewer shall be paid for at the contract unit price per foot for ABANDON EXISTING STORM SEWER and shall include all material, labor, and equipment necessary.

□ 838 East McCord
Centralia, IL 62801
(P) 618-533-6525
(F) 618-533-6652

□ 310A Vision Drive
Columbia, IL 62236
(P) 618-281-8133
(F) 618-281-8290

□ 1004 State Highway 16
Jerseyville, IL 62052
(P) 618-498-6418
(F) 618-498-6410

□ 1929 Richardson Road
Arnold, MO 63010
(P) 636-464-3610
(F) 636-464-2059

"DEDICATING OUR SERVICES TO STRENGTHEN CLIENT TRUST"

PROJECT DRAWINGS

Changes/additions/clarifications to the project drawings are as listed below:

Sheet 3: Changed summary of quantities.

Sheet 4: Changed existing pipe callout.


Sheet 5: Changed elevations of PCC gutter.

Sheet 6: Changed callout for pipe at Exchange St.

Sheet 7: Changed elevations of PCC gutter and callout for pipe at Spruce St.

Sheet 8: Changed elevations of PCC gutter.

End of Addendum.



J. Adam Lott, P.E.
Project Engineer

City of Jerseyville
Pleasant Street Drainage Improvements – Phase 1
Pre-Bid Meeting ~~Agenda~~ Minutes
Thursday, February 11, 10:00 A.M.
City of Jerseyville- Feyerbend Building, 201 E. Spruce St., Jerseyville, IL 62052

1. Introduce: A. Heneghan & Associates’ Representatives – Adam Lott
 B. City of Jerseyville Representatives – Bob Manns
2. Please sign the Attendance Sheet.
3. Bid Opening: **Thursday, February 18, 2021 @ 2:00 pm**, City of Jerseyville, Feyerbend Building, 201 E. Spruce St., Jerseyville, IL 62052. **Sealed Bids will be received attention to Bob Manns, Public Works Director, at the City of Jerseyville, 115 E. Prairie St., Jerseyville, IL, 62052, until **1:00 PM** local time on February 18, 2021. (Please note the City of Jerseyville lobby is closed; bids will be accepted by appointment or drive through window.)**
 - a. Addendum must be acknowledged (Addendum will be emailed and mailed by Friday February 12, 2021).
 - b. 5% Bid Bond.
 - c. Must use prevailing wage rates listed in the specifications.
 - d. The City is tax exempt as a not for profit organization.
 - e. Hold bid prices for 90 days.
 - f. Engineer’s estimate for Phase I is \$190,000
4. If the Bids are acceptable, a recommendation will be given to the City of Jerseyville. If accepted, the Contract will be tentatively awarded at the City’s February 23, 2021, Regular monthly board meeting. The CONTRACTOR will then have two weeks to execute the necessary paperwork and bonding requirements. The Notice to Proceed would be issued by approximately March 9, 2021, with a construction start date of approximately March 15, 2021. The final completion date will be May 28, 2021.
5. Easements – This project on easements and City ROW. The Contractor shall not get off authorized areas without written consent from the landowner.
6. Submit pay request(s) fourteen (14) days prior to first monthly Board meeting (first or second Tuesday of each month) to Engineer. Once approved by the City the pay request will be paid by City of Jerseyville (within 30 days).
7. Planholder’s lists available upon request and at online at www.haengr.com.
8. Clarifications to the Plans and Specifications currently include the following:
 - a. Plans: Existing utilities are shown based on available maps and information from the city, however it should be noted that all utilities may not be shown on the plans. No additional compensation will be allowed for any delay from utilities regardless if they are shown on the plans. A pay item will be added for filling the existing 24” VCP pipe, to be abandoned, with flowable fill.
 - b. Specs: Mobilization will be paid at the lump sum bid price. Additional compensation will not be allowed for any remobilization.
9. Representatives of HA and the City of Jerseyville are available to review the project site after the pre-bid meeting.
10. Comments from Heneghan and Associates representatives:
The project has a significant drainage area flowing to the proposed storm sewer pipe, inlets, and detention basin and contractor should be aware that dewatering or other provisions may be required as part of the project.

11. Comments from the City of Jerseyville representatives:

The project is funded by a DCEO grant and funding requirement are included in the project specifications.

The city is currently working with adjacent property owners for easements.

12. Comments/Questions from Contractor's:

Will 24" VCP north of Spruce be removed? No, plan sheets have been revised to clarify.

The 36" pipe quantities don't match between plan and bid form. The bid form has been revised to match the plans.

Can both roads be closed at the same time during the project? No, only one of the roads can be closed at a time. Each road can be closed for a maximum of three (3) days during the project for patching of the PCC roadway. The PCC mix used for roadway repairs shall be a high early strength mix design to allow for traffic loading, when the roadway is reopened to traffic.

Does the project have an erosion control plan? The project includes inlet protection, erosion control blanket, and temporary seeding as part of the project. The project does not include any silt fence.

Does the city have a place to haul the excess excavation or the trees? No, contractor will be responsible for finding a place to haul the excess excavation and trees. The topsoil shall be stockpiled for use in the detention basin as detailed in the plans & specifications. Any excess topsoil shall be hauled to the designated site for the school district.

Does the PCC gutter in the detention area have any slope? Yes, plan sheets have been revised to clarify.

Will the engineer provide a construction staking cost? Yes, if requested by the contractor.

BID FORM

City of Jerseyville

Pleasant Street Drainage Improvements - Phase 1

00140-331

TABLE OF CONTENTS

	Page
Article 1 – Bid Recipient	1
Article 2 – Bidder’s Acknowledgements	1
Article 3 – Bidder’s Representations.....	1
Article 4 – Bidder’s Certification	2
Article 5 – Basis of Bid.....	2
Article 6 – Time of Completion	4
Article 7 – Attachments to this Bid	4
Article 8 – Defined Terms.....	4
Article 9 – Bid Submittal.....	4

ARTICLE 1 – BID RECIPIENT

1.01 This Bid is submitted to:

Bob Manns, Public Works Director

City of Jerseyville

115 E. Prairie St., Jerseyville, IL, 62052

1.02 The undersigned Bidder proposes and agrees, if this Bid is accepted, to enter into an Agreement with Owner in the form included in the Bidding Documents to perform all Work as specified or indicated in the Bidding Documents for the prices and within the times indicated in this Bid and in accordance with the other terms and conditions of the Bidding Documents.

ARTICLE 2 – BIDDER'S ACKNOWLEDGEMENTS

2.01 Bidder accepts all of the terms and conditions of the Instructions to Bidders, including without limitation those dealing with the disposition of Bid security. This Bid will remain subject to acceptance for 90 days after the Bid opening, or for such longer period of time that Bidder may agree to in writing upon request of Owner.

ARTICLE 3 – BIDDER'S REPRESENTATIONS

3.01 In submitting this Bid, Bidder represents that:

A. Bidder has examined and carefully studied the Bidding Documents, and any data and reference items identified in the Bidding Documents, and hereby acknowledges receipt of the following Addenda:

Addendum No.

Addendum, Date

_____	_____
_____	_____
_____	_____
_____	_____

B. Bidder has visited the Site, conducted a thorough, alert visual examination of the Site and adjacent areas, and become familiar with and satisfied itself as to the general, local, and Site conditions that may affect cost, progress, and performance of the Work.

C. Bidder is familiar with and has satisfied itself as to all Laws and Regulations that may affect cost, progress, and performance of the Work.

D. Bidder has carefully studied all: (1) reports of explorations and tests of subsurface conditions at or adjacent to the Site and all drawings of physical conditions relating to existing surface or subsurface structures at the Site that have been identified in the Supplementary Conditions, especially with respect to Technical Data in such reports and drawings, and (2) reports and drawings relating to Hazardous Environmental Conditions, if any, at or adjacent to the Site that have been identified in the Supplementary Conditions, especially with respect to Technical Data in such reports and drawings.

E. Bidder has considered the information known to Bidder itself; information commonly known to contractors doing business in the locality of the Site; information and observations obtained from visits to the Site; the Bidding Documents; and any Site-related reports and drawings identified in the Bidding Documents, with respect to the effect of such information, observations, and documents on (1) the cost,

progress, and performance of the Work; (2) the means, methods, techniques, sequences, and procedures of construction to be employed by Bidder; and (3) Bidder's safety precautions and programs.

- F. Bidder agrees, based on the information and observations referred to in the preceding paragraph, that no further examinations, investigations, explorations, tests, studies, or data are necessary for the determination of this Bid for performance of the Work at the price bid and within the times required, and in accordance with the other terms and conditions of the Bidding Documents.
- G. Bidder is aware of the general nature of work to be performed by Owner and others at the Site that relates to the Work as indicated in the Bidding Documents.
- H. Bidder has given Engineer written notice of all conflicts, errors, ambiguities, or discrepancies that Bidder has discovered in the Bidding Documents, and confirms that the written resolution thereof by Engineer is acceptable to Bidder.
- I. The Bidding Documents are generally sufficient to indicate and convey understanding of all terms and conditions for the performance and furnishing of the Work.
- J. The submission of this Bid constitutes an incontrovertible representation by Bidder that Bidder has complied with every requirement of this Article, and that without exception the Bid and all prices in the Bid are premised upon performing and furnishing the Work required by the Bidding Documents.

ARTICLE 4 – BIDDER'S CERTIFICATION

4.01 Bidder certifies that:

- A. This Bid is genuine and not made in the interest of or on behalf of any undisclosed individual or entity and is not submitted in conformity with any collusive agreement or rules of any group, association, organization, or corporation;
- B. Bidder has not directly or indirectly induced or solicited any other Bidder to submit a false or sham Bid;
- C. Bidder has not solicited or induced any individual or entity to refrain from bidding; and
- D. Bidder has not engaged in corrupt, fraudulent, collusive, or coercive practices in competing for the Contract. For the purposes of this Paragraph 4.01.D:
 - 1. "corrupt practice" means the offering, giving, receiving, or soliciting of any thing of value likely to influence the action of a public official in the bidding process;
 - 2. "fraudulent practice" means an intentional misrepresentation of facts made (a) to influence the bidding process to the detriment of Owner, (b) to establish bid prices at artificial non-competitive levels, or (c) to deprive Owner of the benefits of free and open competition;
 - 3. "collusive practice" means a scheme or arrangement between two or more Bidders, with or without the knowledge of Owner, a purpose of which is to establish bid prices at artificial, non-competitive levels; and
 - 4. "coercive practice" means harming or threatening to harm, directly or indirectly, persons or their property to influence their participation in the bidding process or affect the execution of the Contract.

ARTICLE 5 – BASIS OF BID

5.01 Bidder will complete the Work in accordance with the Contract Documents for the following price(s):

ITEM NUMBER	ITEM	UNIT	QUANTITY	UNIT PRICE	TOTAL PRICE
1	TREE REMOVAL	EACH	18		
2	NITROGEN FERTILIZER NUTRIENT	POUND	90		
3	PHOSPHORUS FERTILIZER NUTRIENT	POUND	90		
4	POTASSIUM FERTILIZER NUTRIENT	POUND	90		
5	EARTH EXCAVATION	CY	1900		
6	TRENCH BACKFILL	TON	160		
7	SEEDING, CLASS 2	ACRE	1		
8	MULCH, METHOD 2	ACRE	0.8		
9	TEMPORARY EROSION CONTROL SEEDING	POUND	100		
10	INLET AND PIPE PROTECTION	EACH	2		
11	TURF REINFORCEMENT MAT	SQ FT	1100		
12	EROSION CONTROL BLANKET	SQ YD	950		
13	STONE RIPRAP, CLASS A4	SQ YD	65		
14	FILTER FABRIC	SQ YD	65		
15	PORTLAND CEMENT CONCRETE ROADWAY PAVEMENT	SQ YD	119		
16	PORTLAND CEMENT CONCRETE SIDEWALK 4 INCH	SQ FT	100		
17	CONCRETE GUTTER (SPECIAL)	FOOT	87		
18	PAVEMENT REMOVAL	SQ YD	119		
19	DRIVEWAY PAVEMENT REMOVAL	SQ YD	84		
20	SIDEWALK REMOVAL	SQ FT	100		
21	STORM SEWER PIPE REMOVAL	FOOT	210		
22	DRAINAGE STRUCTURE TO BE REMOVED	EACH	5		
23	PRECAST REINFORCED CONCRETE FLARED END SECTIONS 30"	EACH	1		
24	STORM SEWERS, CLASS A, TYPE 1 21"	FOOT	9		
25	STORM SEWERS, CLASS A, TYPE 1 30"	FOOT	181		
26	STORM SEWERS, CLASS A, TYPE 1 36"	FOOT	28		
27	STORM SEWERS, (WATERMAIN REQUIREMENTS),30"	FOOT	30		
28	STORM SEWERS, (WATERMAIN REQUIREMENTS),36"	FOOT	30		
29	MANHOLES, TYPE A, 5'-DIAMETER, TYPE 1 FRAME AND GRATE (CLOSED)	EACH	1		
30	MANHOLES, TYPE A, 5'-DIAMETER, TYPE 1 FRAME AND GRATE (OPEN)	EACH	1		
31	6'x6' PCC CURB INLET	EACH	4		
32	DETENTION BASIN OUTLET STRUCTURE	EACH	1		
33	STORM SEWER CONNECTION (EXISTING PIPE TO INLET)	EACH	3		
34	CONNECT EXISTING DOWNSPOUTS	EACH	1		
35	CONSTRUCTION LAYOUT	L SUM	1		
36	MOBILIZATION	L SUM	1		
37	TRAFFIC CONTROL AND PROTECTION, (SPECIAL)	L SUM	1		
38	CHAINLINK FENCE, 6'	FOOT	440		
39	CHAINLINK GATES, 6'X3' SINGLE	EACH	1		
40	CHAINLINK GATES, 6'X16' DOUBLE	EACH	1		
41	ABANDONED EXISTING STORM SEWER	FOOT	140		
			TOTAL		

Total Price _____ Dollars

(In Words)

ARTICLE 6 – TIME OF COMPLETION

- 6.01 Bidder agrees that the Work will be substantially complete and will be completed and ready for final payment in accordance with Paragraph 15.06 of the General Conditions on or before the dates or within the number of calendar days indicated in the Agreement.
- 6.03 Bidder accepts the provisions of the Agreement as to liquidated damages.

ARTICLE 7 – ATTACHMENTS TO THIS BID

- 7.01 The following documents are submitted with and made a condition of this Bid:
- A. Required Bid security;
 - B. List of Proposed Subcontractors;
 - C. List of Proposed Suppliers;
 - D. List of Project References;
 - E. Evidence of authority to do business in the state of the Project; or a written covenant to obtain such license within the time for acceptance of Bids;
 - F. Contractor's License No.: **[or]** Evidence of Bidder's ability to obtain a State Contractor's License and a covenant by Bidder to obtain said license within the time for acceptance of Bids;
 - G. Required Bidder Qualification Statement with supporting data; and
 - ~~H. If bid amount exceeds \$10,000, signed Compliance Statement (RD400-6). Refer to specific equal opportunity requirements set forth in the Supplemental General Conditions;~~
 - ~~I. If Bid amount exceeds \$25,000, signed Certification Regarding Debarment, Suspension, Ineligibility and Voluntary Exclusion – Lower Tier Covered Transactions (AD-1048);~~
 - ~~J. If Bid amount exceeds \$100,000, signed RD Instructions 1940-Q, Exhibit A-1, Certification for Contracts, Grants, and Loans.~~

ARTICLE 8 – DEFINED TERMS

- 8.01 The terms used in this Bid with initial capital letters have the meanings stated in the Instructions to Bidders, the General Conditions, and the Supplementary Conditions.

ARTICLE 9 – BID SUBMITTAL

BIDDER: *[Indicate correct name of bidding entity]*

By:
[Signature]

[Printed name]

(If Bidder is a corporation, a limited liability company, a partnership, or a joint venture, attach evidence of authority to sign.)

Attest:

[Signature] _____

[Printed name] _____

Title: _____

Submittal Date: _____

Address for giving notices:

Telephone Number: _____

Fax Number: _____

Contact Name and e-mail address: _____

Bidder's License No.: _____

(where applicable)

P:\T\as\clients\00140 - jerseyville, city\331 - pleasant st drainage project\cad\dwg\general\00140-331-general sheets.dwg
PLOTTER: 2/12/2021 @ 1:56:09 PM BY: brandon l. haves

GENERAL CONSTRUCTION:

1. THESE IMPROVEMENTS SHALL BE CONSTRUCTED IN ACCORDANCE WITH THE PLANS, "STANDARD SPECIFICATIONS FOR ROAD AND BRIDGE CONSTRUCTION, ADOPTED JANUARY 1, 2016", AND SPECIAL PROVISIONS.
2. THE CONTRACTOR SHALL CONFINE HIS OPERATIONS WITHIN THE CONSTRUCTION LIMITS INDICATED ON THE PLANS. ANY AREA DISTURBED BEYOND THESE LIMITS SHALL BE RESTORED TO ITS ORIGINAL CONDITION AT THE CONTRACTOR'S EXPENSE.
3. ONLY THOSE TREES SHOWN TO BE REMOVED ON THE PLANS OR DESIGNATED BY THE ENGINEER SHALL BE REMOVED. THE CONTRACTOR WILL PROTECT ALL REMAINING TREES AND SHRUBS FROM DAMAGE DUE TO HIS OPERATIONS. ALL TREES AND STUMPS INDICATED ON THE PLANS FOR REMOVAL SHALL BE REMOVED AND DISPOSED OF BY THE CONTRACTOR.
4. ANY STANDARD NUMBER LISTED SHALL BE INTERPRETED TO BE THE COPY OF THE STANDARDS INCLUDED IN THE PLANS.
5. NO PAYMENT WILL BE ALLOWED FOR OVERHAUL OF EARTH WORK.
6. THE CONTRACTOR IS RESPONSIBLE FOR CONTACTING THE ENGINEER AT LEAST FORTY-EIGHT (48) HOURS IN ADVANCE OF ANY CONSTRUCTION ACTIVITIES OR WORK REQUIRING OBSERVATION OR APPROVAL BY THE AFFECTED UNITS OF GOVERNMENT.
7. THE CONTRACTOR SHALL VERIFY ALL DIMENSIONS AND CONDITIONS IN THE FIELD PRIOR TO CONSTRUCTION AND ORDERING OF MATERIALS.
8. WHERE SECTION OR SUB-SECTION MARKERS OR PROPERTY MARKERS ARE ENCOUNTERED THE ENGINEER SHALL BE NOTIFIED BEFORE THEY ARE DISTURBED. THE CONTRACTOR SHALL PROTECT AND PRESERVE ALL PROPERTY MARKERS UNTIL AN AUTHORIZED SURVEYOR HAS WITNESSED OR REFERENCED THEIR LOCATION.
9. ALL STATIONS AND OFFSETS (O/S) REFERENCES ARE TO THE PROPOSED DRAINAGE CHANNEL CENTERLINE OR THE STORM SEWER CENTERLINE.
10. ALL ELEVATIONS SHOWN ON THE PLANS ARE BASED ON USGS MEAN SEA LEVEL DATUM.

TRAFFIC CONTROL:

1. ALL TRAFFIC CONTROL (INCLUDING, BUT NOT LIMITED TO WORK ZONE, TEMPORARY, AND PERMANENT) SHALL BE FURNISHED, INSTALLED, MAINTAINED, RELOCATED, AND/OR REMOVED IN ACCORDANCE WITH DIVISION 700 OF THE ABOVE IDOT STANDARD SPECIFICATIONS FOR ROAD AND BRIDGE CONSTRUCTION, ADOPTED JANUARY 1, 2016 AND THE CURRENT EDITION OF THE MANUAL ON UNIFORM TRAFFIC CONTROL DEVICES IN EFFECT ON THE DATE OF THE INVITATION FOR BIDS. THE DELIVERY, INSTALLATION, MAINTENANCE, RELOCATION, AND/OR REMOVAL OF ALL TRAFFIC CONTROL DEVICES (REQUIRED IN THESE PLANS, THE SPECIAL PROVISIONS, AND/OR FIELD IMPLEMENTED) SHALL BE INCLUDED IN THE TRAFFIC CONTROL AND PROTECTION PAY ITEM LISTED IN THE SUMMARY OF QUANTITIES.
2. THE CONTRACTOR SHALL CLOSE EXCHANGE STREET AND SPRUCE STREET. TO ALL THROUGH TRAFFIC FOR THE CONSTRUCTION OF STORM SEWER CROSSINGS AND ROADWAY REPAIRS.
3. FOR STABILIZATION, ALL TYPE III BARRICADES SHALL REQUIRE A MINIMUM OF FOUR SAND BAGS PER BARRICADE.

UTILITIES:

1. THE TYPE, SIZE, AND LOCATION OF UTILITIES, AS DELINEATED IN THESE DOCUMENTS, HAVE BEEN DETERMINED BY REVIEW OF AVAILABLE EXISTING RECORD DRAWINGS, OR FIELD SURVEY OF ABOVE GROUND SURFACE UTILITY FEATURES. THE OWNER AND ENGINEER HAVE NOT UNDERTAKEN SUBSURFACE EXPLORATORY INVESTIGATIONS TO CONFIRM OR VERIFY THE UTILITIES SHOWN ON THESE DOCUMENTS; THEREFORE THEIR EXACT LOCATION, SIZE, AND FUNCTION MUST BE CONSIDERED APPROXIMATE AND MUST BE FIELD CONFIRMED BY THE CONTRACTOR.
2. THE ENGINEER AND OWNER FURTHER DO NOT WARRANT THAT ALL UTILITIES HAVE BEEN ILLUSTRATED ON THESE DOCUMENTS. THE CONTRACTOR IS SOLELY RESPONSIBLE FOR CONTACTING J.U.L.I.E. FOR FIELD VERIFICATION OF ALL UTILITIES ON THE SITE PRIOR TO COMMENCEMENT OF CONSTRUCTION. THE J.U.L.I.E. NUMBER IS 800-892-0123. A MINIMUM OF 48 HOURS ADVANCE NOTICE IS REQUIRED. THIS PROJECT LIES IN SECTION 21 TOWNSHIP 8N, RANGE 11W IN JERSEY COUNTY. IF THE CONTRACTOR DETERMINES THAT SUBSTANTIAL DISCREPANCY EXISTS BETWEEN FIELD VERIFIED UTILITIES AND THESE PLANS (WHICH WOULD SIGNIFICANTLY AFFECT THE FUNCTION, COST, OR PERFORMANCE OF THE PROJECT), THE CONTRACTOR SHALL IMMEDIATELY CONTACT THE ENGINEER FOR CLARIFICATION AND PROJECT DIRECTION.
3. ANY FACILITIES OR APPURTENANCES OF A PUBLICLY OR PRIVATELY OWNED UTILITY COMPANY, WHICH ARE IN DIRECT VIOLATION OF THE CITY OF JERSEYVILLE POLICIES AND PROCEDURES, SHALL BE RELOCATED OR ADJUSTED BY THEIR RESPECTIVE OWNERS. THE CONTRACTOR SHALL NOTIFY AND COOPERATE WITH THE OWNER(S) OF ANY SUCH FACILITY AND COORDINATE HIS OPERATIONS TO PROMOTE PROMPT UTILITY ADJUSTMENT AND REASONABLE CONSTRUCTION PROGRESS.
4. THE CONTRACTOR SHALL BE RESPONSIBLE FOR PROTECTING UTILITY PROPERTY FROM CONSTRUCTION OPERATIONS AS OUTLINED IN ARTICLE 107.31 OF THE STANDARD SPECIFICATIONS.
5. ALL UTILITY FACILITIES THAT REQUIRE RELOCATION WITHIN CITY R.O.W. SHALL BE COMPLETED BY THE UTILITY COMPANY UNLESS OTHERWISE SHOWN ON THE PLANS.
6. THE FOLLOWING ENTITIES HAVE UTILITY FACILITIES WITHIN/DIRECTLY ADJACENT TO THE CONSTRUCTION LIMITS OF THIS PROJECT:

AMERICAN WATER
300 NORTH WATER WORKS DRIVE
BELLEVILLE, IL 62223
(800) 422-2782

NEW WAVE
(COMMUNICATIONS)
1176 E 1500 NORTH ROAD
TAYLORVILLE, IL 62568
(217) 287-7992

GRAFTON TECHNOLOGIES
(COMMUNICATIONS)
301 COMMERCE BOULEVARD
JERSEYVILLE, IL 62052
(618) 639-4841

FRONTIER COMMUNICATIONS
(COMMUNICATIONS)
225 NORTH BROAD ST.
CARLINVILLE, IL 62626
(618) 854-2025

UTILITIES (CONTINUED):

AMEREN CIPS
(ELECTRIC & GAS)
700 JERSEY ST.
QUINCY, IL 62308
(217) 221-0850

DRAINAGE CONSTRUCTION:

1. ANY EXISTING CULVERTS OR STORM SEWER TO REMAIN-IN-PLACE THAT ARE DAMAGED BY THE CONTRACTOR SHALL BE REMOVED AND REPLACED AT THE CONTRACTOR'S SOLE EXPENSE.
2. ALL DRAINAGE IMPROVEMENTS INCLUDING CULVERTS, STORM SEWERS, RIPRAP, ETC. SHALL BE CONSTRUCTED IN EXCAVATION FREE OF WATER. WATER SHALL BE REMOVED BY USE OF A DIVERSION CHANNEL OR BY OTHER MEANS APPROVED BY THE ENGINEER. THIS WORK WILL BE INCIDENTAL TO THE ITEM BEING CONSTRUCTED.
3. AFTER REMOVAL, ALL PIPE CULVERTS SHALL BE SALVAGED BY THE CONTRACTOR IF DETERMINED TO BE IN GOOD CONDITION BY THE CITY OF JERSEYVILLE AND SHALL BE HAULED TO CITY STREET DEPARTMENT SHED.
4. STORM SEWER MANHOLES WITH FLAT SLAB TOPS SHALL ALL UTILIZE 2" MINIMUM TO 6" MAXIMUM OF GRADE RINGS UNDER THE TYPE 5 FRAME AND LID (OPEN OR CLOSED) TO ADJUST TO THE PROPER FINISHED GRADE.
5. FINAL BACKFILL UNDER EXISTING PAVED AREA SHALL BE DONE WITH COMPACTED CA-6 MATERIAL.

PAVEMENT CONSTRUCTION:

1. SAW CUTTING OF EXISTING PAVEMENT, NECESSARY FOR ITS REMOVAL, SHALL BE INCLUDED IN THE COST OF THE ITEMS FOR WHICH THE SAW CUT IS BEING MADE. THE REMOVAL OF ALL OIL AND CHIP PAVEMENT HAS BEEN INCLUDED IN THE PAVEMENT REMOVAL QUANTITY AND THE REMOVAL OF ALL EXISTING AGGREGATE PAVEMENT SHALL BE INCLUDED IN THE EARTH EXCAVATION QUANTITY AND SHALL NOT BE MEASURED, NOR PAID FOR, AS A SEPARATE REMOVAL ITEM.
2. ALL TRENCH BACKFILL AND POROUS GRANULAR EMBANKMENT IN AREAS TO BE PAVED SHALL BE CRUSHED STONE MEETING THE CA-6 GRADATION.
3. PCC PAVEMENT (6" OR EXISTING PAVEMENT THICKNESS, WHICHEVER IS GREATER) SHALL BE USED TO PATCH THE PCC ROADWAYS, DRIVEWAYS, ENTRANCE SHOULDERS (EXCHANGE STREET AND SPRUCE STREET) AFTER TRENCH BACKFILL HAS BEEN COMPACTED. PCC PAVEMENT PATCHES SHALL INCLUDE #6 REBAR, 18" LONG AT 18" CENTERS FOR CONNECTION TO EXISTING PAVEMENT.
4. PCC CURB AND GUTTER SHALL BE M6.12 PER SECTION 606 OF STANDARD SPECIFICATIONS AND IDOT STANDARD 606001-05.

SEEDING & EROSION CONTROL:

1. THE CONTRACTOR SHALL BE REQUIRED TO COMPLY WITH THE PROVISIONS OF THE SPECIAL PROVISIONS AND IMPLEMENT THE EROSION CONTROL PLAN INCLUDED IN THESE PLANS, AS SPECIFIED IN ARTICLE 107.23. THE ENGINEER MUST GIVE PRIOR APPROVAL BEFORE DISTURBANCE OF ANY AREA CAN BEGIN.
2. IT IS THE CONTRACTOR'S RESPONSIBILITY TO INSURE THAT ALL EROSION AND DISPLACED SEDIMENT DOES NOT MIGRATE OFF SITE. IF UNEXPECTED EROSION OR SEDIMENTATION OCCURS OR IF THE EROSION PLAN STRUCTURES BECOME DAMAGED, THE CONTRACTOR SHALL PROVIDE SUFFICIENT MEASURES TO REPAIR, REPLACE, OR INSTALL EROSION CONTROL STRUCTURES TO INSURE OFF-SITE DAMAGE DOES NOT OCCUR. ANY SEDIMENT OR EROSION DAMAGE WHICH OCCURS OFF-SITE SHALL BE REPAIRED AT THE CONTRACTOR'S SOLE EXPENSE.
3. ALL TEMPORARY AND PERMANENT EROSION CONTROL DEVICES SHALL BE IMPLEMENTED AS SHOWN ON THE PLANS. ALL MAINTENANCE OF EROSION CONTROL DEVICES SHALL BE EXECUTED ACCORDING TO SECTION 280 OF THE IDOT STANDARD SPECIFICATIONS FOR ROAD AND BRIDGE CONSTRUCTION, ADOPTED JANUARY 1, 2016.
4. ALL EARTH SURFACES DISTURBED BY CONSTRUCTION, OR AS DIRECTED BY THE ENGINEER, SHALL BE SEEDED AND MULCHED IN ACCORDANCE WITH SECTIONS 250 AND 251 OF THE IDOT STANDARD SPECIFICATIONS FOR ROAD AND BRIDGE CONSTRUCTION, ADOPTED JANUARY 1, 2016. ALL TEMPORARY EROSION CONTROL SEEDING SHALL BE IMPLEMENTED IN ACCORDANCE WITH SECTION 280 OF THE ABOVE REFERENCED EDITION OF THE IDOT STANDARD SPECIFICATIONS FOR ROAD AND BRIDGE CONSTRUCTION.

EARTH/CHANNEL EXCAVATION:

1. THE EARTH EXCAVATION QUANTITIES INCLUDE EXCAVATION TO THE SUBGRADE BELOW THE STONE RIPRAP BEDDING (22" BELOW FINISHED GRADE).
2. THE CITY OF JERSEYVILLE WILL DESIGNATE AN AREA TO HAUL EXCESS TOP SOIL WITHIN THE CITY LIMITS, ON CUSD #100 PROPERTY. OTHER EXCESS EARTH EXCAVATION SHALL BE PROPERLY DISPOSED OF BY THE CONTRACTOR.

SUMMARY OF QUANTITIES

SP	ITEM NUMBER	ITEM	UNIT	QUANTITY
*	1	TREE REMOVAL	EACH	18
	2	NITROGEN FERTILIZER NUTRIENT	POUND	90
	3	PHOSPHORUS FERTILIZER NUTRIENT	POUND	90
	4	POTASSIUM FERTILIZER NUTRIENT	POUND	90
*	5	EARTH EXCAVATION	CY	1900
	6	TRENCH BACKFILL	TON	160
	7	SEEDING, CLASS 2	ACRE	1
	8	MULCH, METHOD 2	ACRE	0.8
	9	TEMPORARY EROSION CONTROL SEEDING	POUND	100
	10	INLET AND PIPE PROTECTION	EACH	2
*	11	TURF REINFORCEMENT MAT	SQ FT	1100
*	12	EROSION CONTROL BLANKET	SQ YD	950
	13	STONE RIPRAP, CLASS A4	SQ YD	65
	14	FILTER FABRIC	SQ YD	65
*	15	PORTLAND CEMENT CONCRETE ROADWAY PAVEMENT	SQ YD	119
	16	PORTLAND CEMENT CONCRETE SIDEWALK 4 INCH	SQ FT	100
*	17	CONCRETE GUTTER (SPECIAL)	FOOT	87
*	18	PAVEMENT REMOVAL	SQ YD	119
	19	DRIVEWAY PAVEMENT REMOVAL	SQ YD	84
	20	SIDEWALK REMOVAL	SQ FT	100
	21	STORM SEWER PIPE REMOVAL	FOOT	210
*	22	DRAINAGE STRUCTURE TO BE REMOVED	EACH	5
	23	PRECAST REINFORCED CONCRETE FLARED END SECTIONS 30"	EACH	1
	24	STORM SEWERS, CLASS A, TYPE 1 21"	FOOT	9
	25	STORM SEWERS, CLASS A, TYPE 1 30"	FOOT	181
	26	STORM SEWERS, CLASS A, TYPE 1 36"	FOOT	28
*	27	STORM SEWERS, (WATERMAIN REQUIREMENTS),30"	FOOT	30
*	28	STORM SEWERS, (WATERMAIN REQUIREMENTS),36"	FOOT	30
	29	MANHOLES, TYPE A, 5'-DIAMETER, TYPE 1 FRAME AND GRATE (CLOSED)	EACH	1
	30	MANHOLES, TYPE A, 5'-DIAMETER, TYPE 1 FRAME AND GRATE (OPEN)	EACH	1
*	31	6'x6' PCC CURB INLET	EACH	4
*	32	DETENTION BASIN OUTLET STRUCTURE	EACH	1
*	33	STORM SEWER CONNECTION (EXISTING PIPE TO INLET)	EACH	3
*	34	CONNECT EXISTING DOWNSPOUTS	EACH	1
*	35	CONSTRUCTION LAYOUT	L SUM	1
	36	MOBILIZATION	L SUM	1
*	37	TRAFFIC CONTROL AND PROTECTION, (SPECIAL)	L SUM	1
	38	CHAINLINK FENCE, 6'	FOOT	440
	39	CHAINLINK GATES, 6'X3' SINGLE	EACH	1
	40	CHAINLINK GATES, 6'X16' DOUBLE	EACH	1
*	41	ABANDONED EXISTING STORM SEWER	FOOT	140

SPECIAL PROVISION PROVIDED

HENEGHAN &
ASSOCIATES, P.C.



DESIGN FIRM NUMBERS:
IL: 184-002692, EXPIRES APRIL 30, 2021
MO: 001310, EXPIRES DECEMBER 31, 2021

1004 STATE HWY. 16
JERSEYVILLE, IL 62052
P: (618) 498-6418
F: (618) 498-6410

838 EAST McCORD STREET
CENTRALIA, IL 62801
P: (618) 533-6525
F: (618) 533-6652

310A VISION DRIVE
COLUMBIA, IL 62236
P: (618) 281-8133
F: (618) 281-8290

1929 RICHARDSON ROAD
ARNOLD, MO 63010
P: (636) 464-3610
F: (636) 464-2059

NO.	DATE	REVISIONS					
		SOQ	UPDATE				
1	2-12-21						

GENERAL NOTES

PLEASANT STREET DRAINAGE
IMPROVEMENTS - PHASE I

CITY OF JERSEYVILLE
JERSEY COUNTY, ILLINOIS

DRAWN BY: BLH/RDS
CHECKED BY: JAL
APPROVED BY: JAL

HORIZONTAL SCALE:

NTS

VERTICAL SCALE:

NTS

PROJECT NO.

00140-331

DATE:

01/29/21

SHEET NO.

3

30F 10 SHEETS

PATH:s:\clients\00140 - jerseyville, ilt\1331 - pleasant st drainage project\cad\dwg\civil\140-331 main.dwg
PLOTED: 2/22/2021 @ 1:56:22 PM BY: brandon.l.haves

HENEGHAN &
ASSOCIATES, P.C.



DESIGN FIRM NUMBERS:
IL: 184-002692, EXPIRES APRIL 30, 2021
MO: 001310, EXPIRES DECEMBER 31, 2021

1004 STATE HWY. 16
JERSEYVILLE, IL 62052
P: (618) 498-6418
F: (618) 498-6410

838 EAST McCORD STREET
CENTRALIA, IL 62801
P: (618) 533-6525
F: (618) 533-6652

310A VISION DRIVE
COLUMBIA, IL 62236
P: (618) 281-8133
F: (618) 281-8290

1929 RICHARDSON ROAD
ARNOLD, MO 63010
P: (636) 464-3610
F: (636) 464-2059

NO.	DATE	REVISIONS
1	2-12-21	CALL OUT UPDATE

DEMOLITION PLAN
PLEASANT STREET DRAINAGE
IMPROVEMENTS - PHASE I
CITY OF JERSEYVILLE
JERSEY COUNTY, ILLINOIS

DRAWN BY: BH
CHECKED BY: JAL
APPROVED BY: JAL

HORIZONTAL SCALE:

NTS

VERTICAL SCALE:

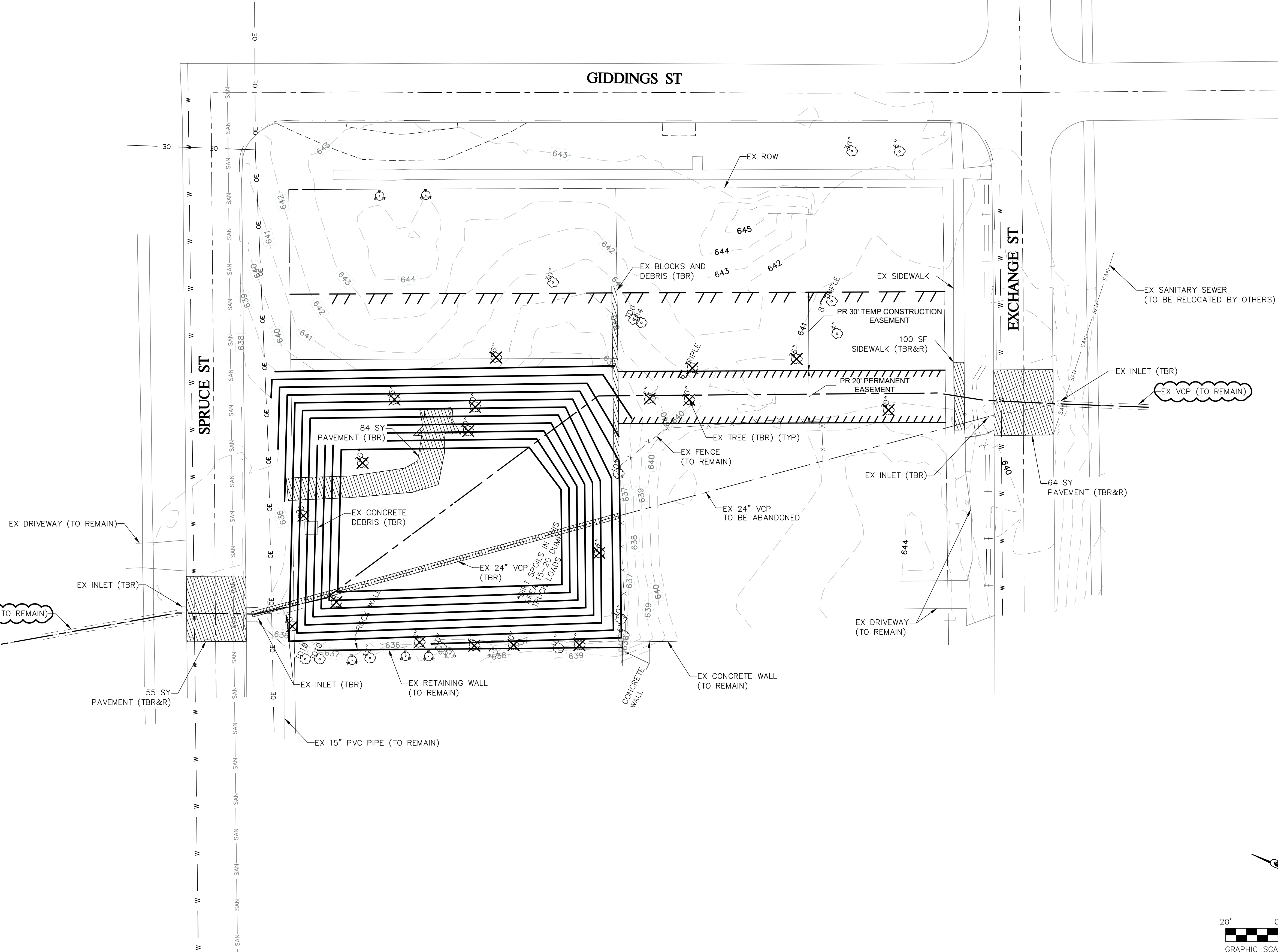
NTS

PROJECT NO.
00140-331

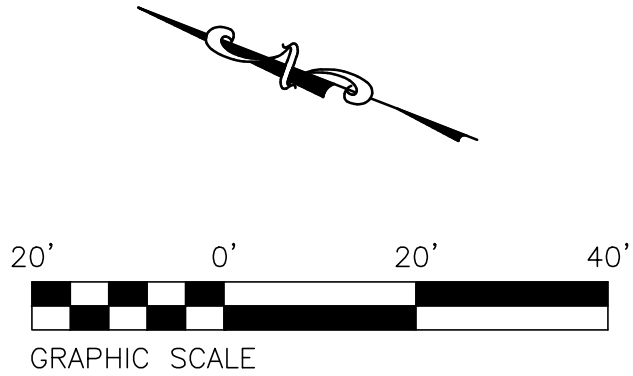
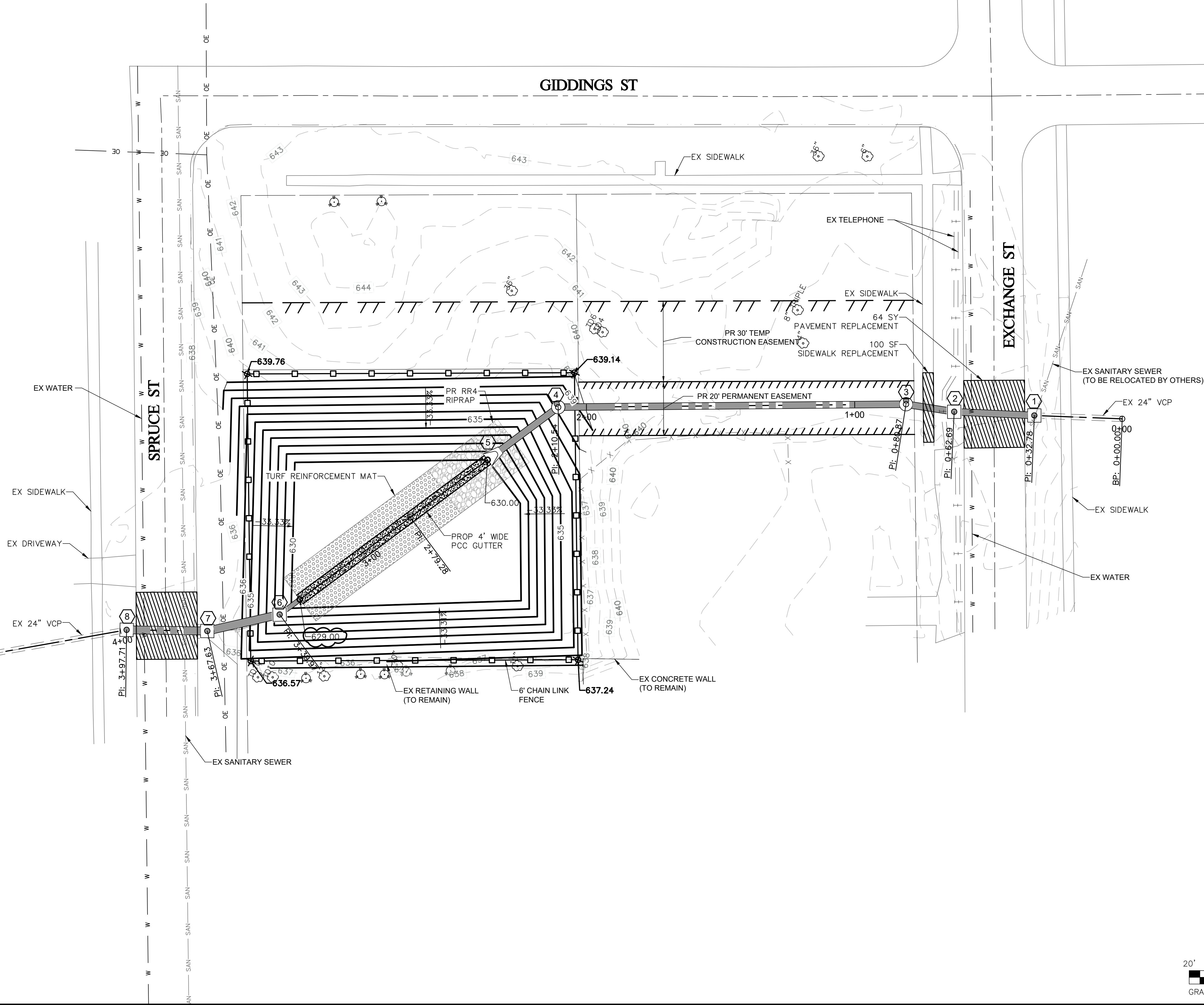
DATE:
01/29/21

SHEET NO.
4

4 OF 10 SHEETS



P:\TH\sa\clients\00140 - jerseyville, city\331 - pleasant st drainage project\cad\dwg\civil\140-331 main.dwg
PLOTTER: 2/12/2021 @ 1:56:25 PM BY: brandon l. haves



DESIGN FIRM NUMBERS:
IL: 184-002692, EXPIRES APRIL 30, 2021
MO: 001310, EXPIRES DECEMBER 31, 2021

1004 STATE HWY. 16
JERSEYVILLE, IL 62052
P: (618) 498-6418
F: (618) 498-6410

838 EAST McCORD STREET
CENTRALIA, IL 62801
P: (618) 533-6525
F: (618) 533-6652

310A VISION DRIVE
COLUMBIA, IL 62236
P: (618) 281-8133
F: (618) 281-8290

1929 RICHARDSON ROAD
ARNOLD, MO 63010
P: (636) 464-3610
F: (636) 464-2059

NO.	DATE	REVISIONS
1	2-12-21	CALL OUT UPDATE

SITE PLAN
PLEASANT STREET DRAINAGE
IMPROVEMENTS - PHASE I

CITY OF JERSEYVILLE
JERSEY COUNTY, ILLINOIS

DRAWN BY: BH
CHECKED BY: JAL
APPROVED BY: JAL

HORIZONTAL SCALE:
1" = 15'

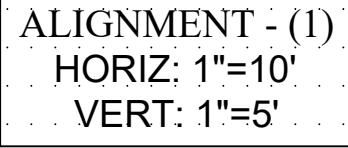
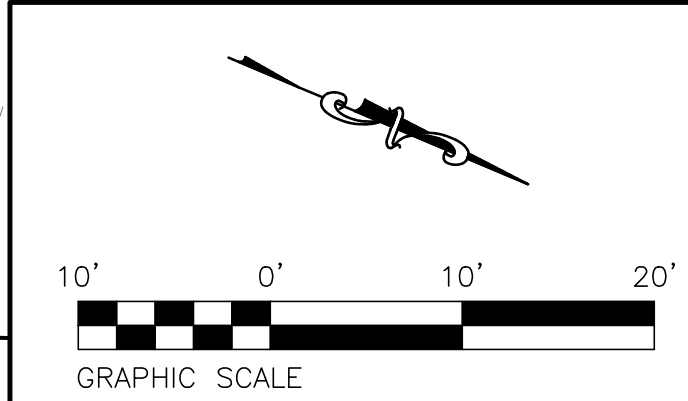
VERTICAL SCALE:
1" = 15'

PROJECT NO.
00140-331

DATE:
01/29/21

SHEET NO.
5

50 OF 10 SHEETS



60F 10 SHEETS

PATH=s:\shared\clients\00140 - jerseyville, city\331 - pleasant st drainage project\cad\dwg\civil\140-331 main.dwg
PLOTTED: 2/12/2021 @ 1:56:30 PM BY brandon l. haves

☐ 1004 STATE HWY. 16
JERSEYVILLE, IL 62052
P: (618) 498-6418
F: (618) 498-6410

☐ 838 EAST McCORD STREET
 CENTRALIA, IL 62801
 P: (618) 533-6525
 F: (618) 533-6652

☐ 310A VISION DRIVE
COLUMBIA, IL 62236
P: (618) 281-8133
F: (618) 281-8290

☐ 1929 RICHARDSON ROAD
ARNOLD, MO 63010
P: (636) 464-3610
F: (636) 464-2059

NO.	DATE	REVISIONS
1	2-12-21	CALL OUT UPDATE

PLAN AND PROFILE

PLEASANT STREET DRAINAGE
IMPROVEMENTS - PHASE I

CITY OF JERSEYVILLE
JERSEY COUNTY, ILLINOIS

DRAWN BY:	BH
CHECKED BY:	JAL
APPROVED BY:	JAL

HORIZONTAL SCALE:
NTS

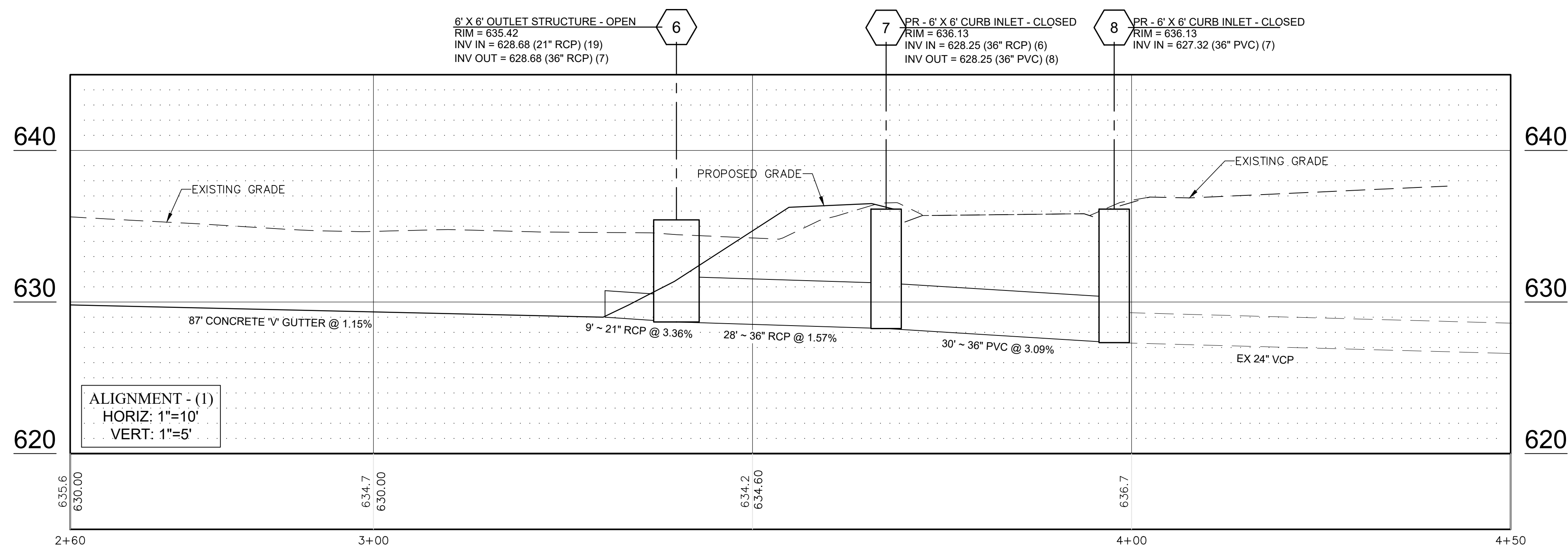
VERTICAL SCALE:
NTS

PROJECT NO.
00140-331

DATE: 01/29/21

SHEET NO. 7

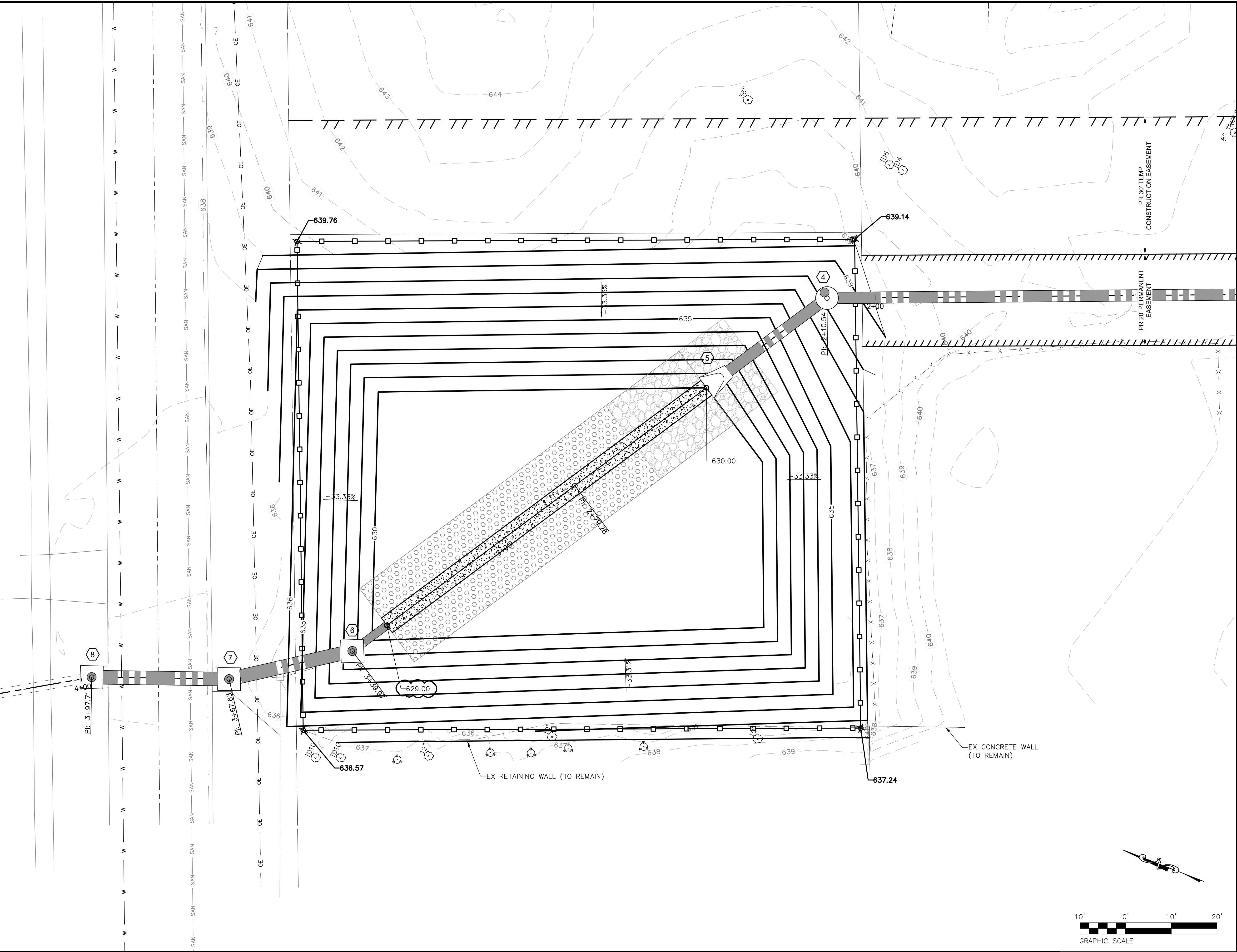
70F 10 SHEETS



PATH=s:\shared\clients\00140 - jerseyville, city\331 - pleasant st drainage project\cad\dwg\civil\140-331 main.dwg
 PLOTTED: 2/12/2021 @ 1:56:35 PM BY brandon l. haves

PATH=s:\shared\clients\00140 - jerseyville, city\331 - p
PLOTTED: 2/12/2021 @ 1:56:40 PM BY brandon l. haves

SPRUCE ST



**HENEGHAN &
ASSOCIATES, P.C.**



DESIGN FIRM NUMBERS:
IL: 184-002692, EXPIRES APRIL 30, 2021
MO: 001310, EXPIRES DECEMBER 31, 2021

☐ 1004 STATE HWY. 16
JERSEYVILLE, IL 62052
P: (618) 498-6418
F: (618) 498-6410

☐ 838 EAST McCORD STREET
CENTRALIA, IL 62801
P: (618) 533-6525
F: (618) 533-6652

☐ 310A VISION DRIVE
COLUMBIA, IL 62236
P: (618) 281-8133
F: (618) 281-8290

☐ 1929 RICHARDSON ROAD
ARNOLD, MO 63010
P: (636) 464-3610
F: (636) 464-2059

NO.	DATE	REVISIONS
1	2-12-21	CALL OUT UPDATE

GRADING PLAN

PLEASANT STREET DRAINAGE IMPROVEMENTS - PHASE I

CITY OF JERSEYVILLE
JERSEY COUNTY, ILLINOIS

DRAWN BY:	BH
CHECKED BY:	JAL
APPROVED BY:	JAL

HORIZONTAL SCALE:
NTS

VERTICAL SCALE:
NTS

PROJECT NO.	00140-331
-------------	-----------

DATE: 01/29/21

SHEET NO. 8

8OF 10 SHEETS