

EAST PEARL STREET PARKING LOT IMPROVEMENTS

CITY OF JERSEYVILLE JERSEY COUNTY, ILLINOIS

MAYOR
WILLIAM RUSSELL

CITY COUNCIL
NICK BEXHETI
ZACHARY CRAWFORD
KEVIN STORK
STEVE POHLMAN

CITY CLERK
DENISE HAYES

PUBLIC WORKS DIRECTOR
ROBERT MANNS

CITY ATTORNEY
WILLIAM STRANG

DATE: FEBRUARY 24, 2021

INDEX OF SHEETS

- 1 COVER SHEET
- 2 LEGEND AND ABBREVIATIONS
- 3 GENERAL NOTES
- 4 DEMOLITION PLAN
- 5 SITE PLAN
- 6 GRADING PLAN
- 7 DETAIL SHEET
- 8 DETAIL SHEET
- 9 DETAIL SHEET

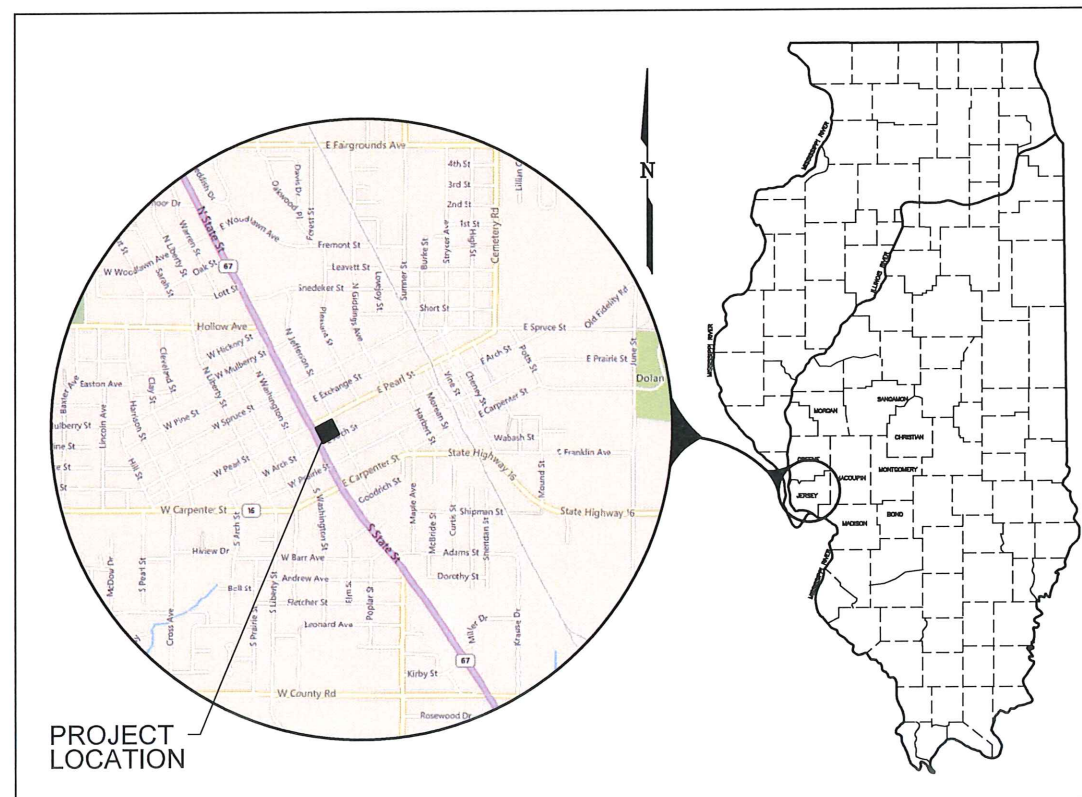


811 or 800-892-0123

Contractor to contact J.U.L.I.E. prior to any excavation or demolition for the location of any pipes, cables, lines, mains, etc. The contractor shall also coordinate any disconnection required with the various utility companies and/or governmental agencies serving the site.

Underground facilities, structures and utilities have been plotted from available surveys and records. Their locations must be considered to be approximate only. It is possible there may be others, the existence of which is not presently known or shown. It is the contractor's responsibility to determine their existence and exact location and to avoid damage thereto.

DIG LOG# _____



J. Adam Lott
REG. ILLINOIS P.E. #61696

EXP. NOVEMBER 30, 2021



HENEGHAN AND ASSOCIATES, P.C.
ENGINEERS-SURVEYORS
www.haengr.com

DESIGN FIRM NUMBERS: IL:184-002692, EXPIRES APRIL 30, 2021
MO: 001310, EXPIRES DECEMBER 31, 2021

1004 STATE HWY. 16
JERSEYVILLE, ILLINOIS 62052
PHONE NO. (618) 498-6418
FAX NO. (618) 498-6410

838 EAST McCORD STREET
CENTRALIA, ILLINOIS 62801
PHONE NO. (618) 533-8525
FAX NO. (618) 533-6652

310A VISION DRIVE
COLUMBIA, ILLINOIS 62236
PHONE NO. (618) 281-8133
FAX NO. (618) 281-8290

1929 RICHARDSON ROAD
ARNOLD, MISSOURI 63010
PHONE NO. (636) 464-3610
FAX NO. (636) 464-2059

PATH:s:\shared\clients\00140 - jerseyville, city\337 - downtown parking lot\cad\dwg\city\jerseyville parking lot.dwg
PLOTED: 2/24/2021 @ 1:42:04 PM BY: lott, adam

SYMBOLS	
EXISTING	PROPOSED

ABBREVIATIONS

ADD	ADDITION
ATG	ADJUST TO GRADE
AI	AREA INLET
AVE	AVENUE
BC	BACK OF CURB
BM	BENCHMARK
BK	BOOK
BLVD	BOULEVARD
BLDG	BUILDING
CL	CENTERLINE
CJ	CONSTRUCTION JOINT
CONC.	CONCRETE
CMP	CORRUGATED METAL PIPE
CF	CUBIC FEET
CY	CUBIC YARDS
CI	CURB INLET
DR	DRIVE
DI	DUCTILE IRON
ESMT	EASEMENT
EOA	EDGE ASPHALT
EOC	EDGE OF CONCRETE
ELEV/EL	ELEVATION
EXIST/EX	EXISTING
EJ	EXPANSION JOINT
FO	FIBEROPTIC LINE
FT	FEET
F&L	FRAME AND LID
FES	FLARED END SECTION
FB	FLAT BOTTOM
FL	FLOWLINE
GI	GRADED INLET

SYMBOLS	
EXISTING	PROPOSED

ABBREVIATIONS

HDPE	HIGH-DENSITY POLYETHYLENE PIPE
HMA	HOT-MIX- ASPHALT
IN	INCHES
INF	INFLOW
INV	INVERT
LA	LANE
LF	LINEAL FOOT
MAX	MAXIMUM
MH	MANHOLE
MJ	MECHANICAL JOINT
MIN	MINIMUM
N/F	NOW AND FORMER
NO	NUMBER
O/C	OIL AND CHIP
OE	OVERHEAD ELECTRIC LINE
PG	PAGE
PV	PAVEMENT
POC	POINT OF COMMENCEMENT
POB	POINT OF BEGINNING
PC	POINT OF CURVATURE
PCC	PORTLAND CEMENT CONCRETE
PI	POINT OF INTERSECTION
PROP/PR	PROPOSED
PT	POINT OF TANGENT
PVC	POLYVINYL CHLORIDE
PE	PRIVATE ENTRANCE
PL	PROPERTY LINE
RR	RAILROAD
RCA	REINFORCED CONCRETE ELLIPTICAL ARCH PIPE
RCE	REINFORCED CONCRETE ELLIPTICAL PIPE
RCP	REINFORCED CONCRETE PIPE

SYMBOLS	
EXISTING	PROPOSED

ABBREVIATIONS

ROW	RIGHT OF WAY
SAN	SANITARY
SF	SQUARE FEET
ST	STREET
SY	SQUARE YARDS
STA	STATION
SWPPP	STORM WATER POLLUTION PREVENTION PLAN
TBM	TEMPORARY BENCHMARK
TYP	TYPICAL
TC	TOP OF CURB
TOC	TOP OF CONCRETE
TBA	TO BE ABANDONED
TBA&F	TO BE ABANDONED AND FILLED
TBR	TO BE REMOVED
TBR&R	TO BE REMOVED AND REPLACED
UIP	USE IN PLACE
VCP	VITREOUS CLAY PIPE

BENCHMARK INFORMATION::

CP/BM #1	1/2" IRON PIN SET WITH RED CAP WEST OF JEFFERSON STREET IN ISLAND BETWEEN FIRST BANK ENTRANCES. ELEV = 656.44
CP/BM #2	1/2" IRON PIN SET WITH RED CAP AT THE NORTHEAST QUADRANT OF THE INTERSECTION OF E PEARL ST AND S JEFFERSON ST 10 FEET WEST OF FIRE HYDRANT. ELEV = 656.45

LINETYPES	
EXISTING	PROPOSED

HATCHING

EXISTING		PROPOSED
	BUILDINGS/STRUCTURES	
	PCC	
	HMA	
	GRAVEL	
	RIPRAP	
	PAVEMENT (TBR)	

HENEGHAN & ASSOCIATES, P.C.



DESIGN FIRM NUMBERS:
IL: 184-002692, EXPIRES APRIL 30, 2021
MO: 001310, EXPIRES DECEMBER 31, 2021

1004 STATE HWY. 16
JERSEYVILLE, IL 62052
P: (618) 498-6418
F: (618) 498-6410

838 EAST McCORD STREET
CENTRALIA, IL 62801
P: (618) 533-6625
F: (618) 533-6652

310A VISION DRIVE
COLUMBIA, IL 62236
P: (618) 281-8133
F: (618) 281-8290

1929 RICHARDSON ROAD
ARNOLD, MO 63010
P: (636) 464-3610
F: (636) 464-2059

REVISIONS					
DATE					
NO.					

LEGEND AND ABBREVIATIONS

EAST PEARL STREET PARKING LOT IMPROVEMENTS

CITY OF JERSEYVILLE
JERSEY COUNTY, ILLINOIS

DRAWN BY:	EAS
CHECKED BY:	CAW
APPROVED BY:	CAW
HORIZONTAL SCALE:	N/A
VERTICAL SCALE:	N/A
PROJECT NO.	00140-337
DATE:	02/24/21
SHEET NO.	2
2 OF 9 SHEETS	

P:\T\as\external\clients\00140 - jerseyville, city\337 - downtown parking lot\cad\dwg\civil\jerseyville parking lot.dwg - 2/25/2021 8:16:38 AM BY: jett. adam

GENERAL NOTES

1. ALL GRADING, DRAINAGE, PAVING, AND SIDEWALK WORK SHALL BE DONE IN ACCORDANCE WITH THE LATEST EDITIONS OF THE IDOT "STANDARD SPECIFICATIONS FOR ROAD AND BRIDGE CONSTRUCTION" AND THE "SUPPLEMENTAL SPECIFICATIONS AND SPECIAL PROVISIONS", HEREINAFTER REFERRED TO AS THE "STANDARD SPECIFICATIONS".
2. THE CONTRACTOR SHALL BE RESPONSIBLE FOR COMPLYING WITH ALL ADA (AMERICAN DISABILITIES ACT) REQUIREMENTS.
3. THE CONTRACTOR SHALL CONTACT J.U.L.I.E. AT 1-800-892-0123 PRIOR TO ANY EXCAVATION FOR THE LOCATION OF ANY PIPES, CABLES, LINES, OR MAINS.
4. UNDERGROUND FACILITIES, STRUCTURES, AND UTILITIES HAVE BEEN PLOTTED FROM AVAILABLE SURVEYS AND RECORDS. THEIR LOCATIONS MUST BE CONSIDERED TO BE APPROXIMATE ONLY. IT IS POSSIBLE THERE MAY BE OTHERS, THE EXISTENCE OF WHICH IS NOT PRESENTLY KNOWN OR SHOWN. IT IS THE CONTRACTOR'S RESPONSIBILITY TO DETERMINE THEIR EXISTENCE AND EXACT LOCATION AND TO AVOID DAMAGE THERETO.
5. THE CONTRACTOR IS RESPONSIBLE FOR KEEPING SITE CLEAN AND ORDERLY TO THE SATISFACTION OF THE OWNER.
6. EARTHWORK COMPACTION, PREPARATION OF THE EXISTING GROUND SURFACE PRIOR TO FILLING, AND FILL MATERIAL SHALL BE IN ACCORDANCE WITH SECTION 205 - EMBANKMENT OF THE STANDARD SPECIFICATIONS. EARTH EXCAVATION SHALL BE DONE IN ACCORDANCE WITH SECTION 202 OF THE STANDARD SPECIFICATIONS. NO PAYMENT FOR OVERHAUL WILL BE ALLOWED FOR EXCAVATED MATERIALS MOVED TO OR FROM ANY SOURCE.
7. ALL EXCESS EXCAVATED EARTH SHALL BE DISPOSED OF BY THE CONTRACTOR UNLESS OTHERWISE SPECIFIED BY THE OWNER.
8. DEMOLITION OF EXISTING PAVEMENT AND APPURTENANCES SHALL CONFORM TO THE APPLICABLE REQUIREMENT OF SECTION 440 OF THE STANDARD SPECIFICATIONS. WHERE CONSTRUCTION REQUIRES REMOVAL OF A PORTION OF A PAVED SURFACE, THE CONTRACTOR SHALL FIRST MAKE A UNIFORMLY STRAIGHT SAW CUT (FULL DEPTH) BY USE OF A DIAMOND CONCRETE SAW OR EQUIVALENT. THE USE OF PNEUMATIC TOOLS TO MAKE THESE CUTS WILL NOT BE ALLOWED.
9. THE CONTRACTOR IS RESPONSIBLE FOR ANY ROADWAY PAVEMENT, CURB AND GUTTER, SIDEWALK, AND PARKING LOT PAVEMENT SHOWN TO REMAIN IN PLACE, THAT IS DESTROYED OR DISTURBED AS A RESULT OR THE DEMOLITION OR CONSTRUCTION OF THE IMPROVEMENTS. THE AFFECTED AREAS SHALL BE REPLACED AND/OR RESTORED PENDING OWNER/ENGINEER APPROVAL AND NO ADDITIONAL COMPENSATION WILL BE ALLOWED.
10. ALL ELEVATIONS SHOWN ARE BASED ON MEAN SEA LEVEL DATUM.
11. SUBGRADE PREPARATION FOR CONSTRUCTION OF PAVEMENT SHALL BE IN ACCORDANCE WITH SECTION 301 - SUBGRADE PREPARATION OF THE STANDARD SPECIFICATIONS.
12. ALL TRANSVERSE SAWED PAVEMENT JOINTS MUST EXTEND THROUGH CURBS, AND MUST BE CONTINUOUS ACROSS THE PAVEMENT.
13. MAXIMUM TRANSVERSE SAWED PAVEMENT JOINTS SPACING SHALL BE FIFTEEN (15') ON CENTER. SAWED JOINTS SHALL BE CONSTRUCTED IN ACCORDANCE WITH EITHER STANDARD BLR NO. 14-12 OF THE STANDARD SPECIFICATIONS OR AS NOTED ON THE PLANS.
14. P.C. CONCRETE SIDEWALKS SHALL COMPLY WITH SECTION 424 - PORTLAND CEMENT CONCRETE SIDEWALKS IN THE STANDARD SPECIFICATIONS.
15. ANY RANDOM CRACKING IN THE PCC PAVEMENT SHALL BE SEALED, REMOVED OR OTHERWISE REPAIRED AS DIRECTED BY THE ENGINEER OR OWNER AT NO ADDITIONAL COST.
16. PCC PAVEMENT SHALL COMPLY WITH SECTION 420 - PORTLAND CEMENT CONCRETE PAVEMENT IN THE STANDARD SPECIFICATIONS.
17. ALL PCC FOR ROADWAYS & PARKING LOTS SHALL BE CLASS PV WITH A MAXIMUM SLUMP OF 3".
18. PCC PAVEMENT, SIDEWALK, AND CURB SHALL HAVE A BROOM FINISH.
19. THE MINIMUM SLOPE ALLOWABLE ON THE PARKING LOT AND SIDEWALK IS 0.5%. THE CONTRACTOR IS RESPONSIBLE TO ENSURE THAT NO PONDING WILL OCCUR ON THE NEW PAVEMENT OR SIDEWALK.
20. CONSTRUCTION JOINTS ARE REQUIRED WHERE A 30 MINUTE OR GREATER INTERRUPTION OCCURS IN THE PAVING OPERATION.
21. DOWEL CURBS TO ROADWAY PCC PAVEMENT IF NOT POURED INTEGRALLY WITH THE PAVEMENT WITH #6 REBAR - 24" LONG @ 24" CENTERS.
22. A PROTECTIVE COATING SHALL BE APPLIED TO ALL PCC PAVEMENTS, CURBS, GUTTERS, AND SIDEWALK.
23. A SLUMP TEST AND ENTRAINED AIR TEST ARE REQUIRED FOR EACH READY MIX TRUCK.
24. TWO (2) BEAMS OR TWO (2) CYLINDERS ARE REQUIRED TO BE MADE EACH DAY OF THE PAVING OPERATION OR TWO (2) PER 1,000 SQUARE YARDS, WHICH EVER IS GREATER.
25. HOT-MIX ASPHALT (HMA) PAVEMENT SHALL COMPLY WITH SECTION 407 - HOT-MIX ASPHALT PAVEMENT (FULL-DEPTH) IN THE STANDARD SPECIFICATIONS.
26. CONTRACTOR SHALL BE RESPONSIBLE FOR FOLLOWING THE CITY OF JERSEYVILLE AND OTHER APPLICABLE REGULATIONS.
27. SIDEWALKS SHALL REQUIRE 1/2" EXPANSION JOINT MATERIAL TO BE PLACED AROUND ALL UTILITY POLES, SIGNS, ETC. THAT ARE ENCOUNTERED. IN ADDITION, 3/4" EXPANSION JOINT MATERIAL SHALL BE USED WHERE THE SIDEWALK ABUTS EXISTING SIDEWALKS, BETWEEN DRIVEWAY PAVEMENT AND SIDEWALK, AND BETWEEN SIDEWALK CURB WHERE SIDEWALKS ABUT A CURB, AND BETWEEN PROPOSED PAVEMENT AND EXISTING BUILDING. THE EXPANSION JOINT MATERIAL SHALL BE PREFORMED RUBBERIZED EXPANSION JOINT MATERIAL (REFLEX OR APPROVED EQUAL).
28. THE CONTRACTOR SHALL BE RESPONSIBLE FOR MAINTAINING THE EXISTING DRAINAGE FLOW PATTERN ADJACENT TO THE PROPOSED ROADWAYS, PARKING LOTS, AND SIDEWALKS. IN ADDITION, THE CONTRACTOR SHALL BE RESPONSIBLE FOR MAINTAINING THE EXISTING DRAINAGE PATTERN BETWEEN EXISTING PAVEMENT AND NEW PAVEMENT. ALL AREAS DEEMED PRONE TO PONDING SHALL BE TAKEN INTO CONSIDERATION AND ELIMINATED. NO PONDING WILL BE PERMITTED.

29. THE CONTRACTOR SHALL VERIFY THE CURB AND GUTTER ELEVATIONS MATCH EXISTING CONDITIONS ALONG JEFFERSON STREET. ANY ADJUSTMENTS NEEDED TO PREVENT PONDING SHALL BE SUBMITTED TO THE ENGINEER FOR APPROVAL.
30. ALL AREAS DISTURBED BY THE CONTRACTOR THAT WILL NOT BE PAVED SHALL BE FINE GRADED WITH TOPSOIL (6" DEPTH), THE CITY OF JERSEYVILLE WILL SEED, FERTILIZE, MULCH, AND LANDSCAPE THE DISTURBED AREAS THAT WILL NOT BE PAVED.
31. UNLESS OTHERWISE DIRECTED BY THE OWNER, PERMANENT SEEDING SHALL BE CLASS 1 LAWN MIXTURE AND SHALL COMPLY WITH THE REQUIREMENTS IN SECTION 250 OF THE STANDARD SPECIFICATIONS FOR SEEDING AND FERTILIZING. ALL AREAS PERMANENTLY SEEDED SHALL BE MULCHED IN ACCORDANCE WITH ARTICLE 251 OF THE STANDARD SPECIFICATIONS AND STABILIZED AS PER METHOD 2, PROCEDURE 1.
32. THE CONTRACTOR SHALL AT ALL TIMES CONDUCT WORK IN SUCH A MANNER AS TO MINIMIZE HAZARDS TO VEHICULAR OR PEDESTRIAN TRAFFIC. TRAFFIC CONTROLS AND WORK SITE PROTECTION SHALL BE IN ACCORDANCE WITH THE APPLICABLE REQUIREMENTS OF CHAPTER 6 (TRAFFIC CONTROLS FOR HIGHWAY CONSTRUCTION AND MAINTENANCE OPERATIONS) OF THE ILLINOIS MANUAL ON UNIFORM TRAFFIC CONTROL DEVICES FOR STREETS AND HIGHWAYS.
33. THE CONTRACTOR SHALL PREVENT MUD, CONSTRUCTION MATERIALS, AND DEBRIS ORIGINATING ON THIS SITE FROM MIGRATING ONTO THE ADJACENT PROPERTIES AND ROADWAYS. THE CONTRACTOR SHALL IMMEDIATELY REMOVE ANY MUD OR DEBRIS THAT IS TRACKED, SPILLED, OR MIGRATES ONTO THE ROADWAY SURFACES OR ADJACENT PROPERTIES.
34. ALL EXISTING SIGNS TO BE RELOCATED SHALL INCLUDE A NEW POST. ALL EXISTING SIGNS WITHIN THE PROJECT AREA SHALL BE REMOVED AND RESET, UNLESS THE SIGN IS NOT LONGER APPLICABLE IN WHICH CASE THE SIGN SHALL BE DELIVERED TO THE CITY OF JERSEYVILLE STREET SHED.
35. ALL ROOF DRAINS ALONG THE ALLEY SHALL BE ADJUSTED TO MATCH THE NEW PAVEMENT ELEVATION AGAINST THE EXISTING BUILDING. THIS WORK SHALL BE INCIDENTAL TO THE PROJECT COST.
36. PCC LANDINGS/RAMPS/STOOPS FOR ACCESS TO BUSINESSES ALONG THE ALLEY SHALL BE CLASS PV WITH WOVEN WIRE FABRIC (6X6-W2.9XW2.9).
37. THE CONTRACTOR SHALL COORDINATE WITH THE CITY AND AMEREN ON THE PROPOSED LIGHT POLES TO BE INSTALLED BY AMEREN DURING CONSTRUCTION OF THE PROPOSED IMPROVEMENTS.
38. THE CONTRACTOR SHALL STAGE THE PROJECT SO ONLY ONE PARKING LOT IS UNDER CONSTRUCTION AT A TIME. THE PARKING LOT AND OTHER IMPROVEMENTS ON THE WEST SIDE OF JEFFERSON STREET SHALL BE COMPLETED FIRST, IF BOTH PARKING LOTS (BASE BID & ALTERNATE #1) ARE INCLUDED IN THE PROJECT CONTRACT.

SUMMARY OF QUANTITIES				
SP	ITEM NUMBE	ITEM	UNIT	QUANTITY
BASE BID "A" PCC PARKING LOT OPTION				
*	1	FURNISHED EXCAVATION (TOP SOIL)	CY	150
*	2	PORTLAND CEMENT CONCRETE PAVEMENT - 7 INCH	SQ YD	2880
*	3	AGGREGATE BASE COURSE, CA-6	TON	800
*	4	INCIDENTAL HOT-MIX ASPHALT SURFACING	TON	40
*	5	PORTLAND CEMENT CONCRETE SIDEWALK	SQ FT	2450
	6	PORTLAND CEMENT CONCRETE CURB	FOOT	680
	7	PORTLAND CEMENT CONCRETE CURB & GUTTER - B6.18	FOOT	900
*	8	PORTLAND CEMENT CONCRETE GUTTER	FOOT	262
	9	DETECTABLE WARNINGS	SQ FT	90
*	10	PAVEMENT AND CURB REMOVAL	SQ YD	2051
*	11	DUMPSTER ENCLOSURE	L SUM	1
*	12	2" HDPE CONDUIT	FOOT	650
*	13	REMOVE AND RESET EXISTING SIGNS	EACH	5
*	14	REMOVE EXISTING SIGNS	EACH	2
*	15	NEW SIGNING	EACH	2
	16	4" PAVEMENT MARKING	FOOT	4200
	17	12" PAVEMENT MARKING	FOOT	1000
	18	PAVEMENT MARKING SYMBOL	SQ FT	51
	19	MOBILIZATION	L SUM	1
*	20	CONSTRUCTION LAYOUT	L SUM	1
*	21	TRAFFIC CONTROL AND PROTECTION, (SPECIAL)	L SUM	1

BASE BID "B" HMA PARKING LOT OPTION				
*	1	FURNISHED EXCAVATION (TOP SOIL)	CY	150
*	2	PORTLAND CEMENT CONCRETE PAVEMENT - 7 INCH	SQ YD	1220
	3	HOT-MIX ASPHALT SURFACE COURSE (MIX C N50)	TON	150
	4	HOT-MIX ASPHALT BASE COURSE (MIX C N50)	TON	250
*	5	AGGREGATE BASE COURSE, CA-6	TON	1200
*	6	INCIDENTAL HOT-MIX ASPHALT SURFACING	TON	40
*	7	PORTLAND CEMENT CONCRETE SIDEWALK	SQ FT	2450
	8	PORTLAND CEMENT CONCRETE CURB	FOOT	680
	9	PORTLAND CEMENT CONCRETE CURB & GUTTER - B6.18	FOOT	900
*	10	PORTLAND CEMENT CONCRETE GUTTER	FOOT	262
	11	DETECTABLE WARNINGS	SQ FT	90
*	12	PAVEMENT AND CURB REMOVAL	SQ YD	2051
*	13	DUMPSTER ENCLOSURE	L SUM	1
*	14	2" HDPE CONDUIT	FOOT	650
*	15	REMOVE AND RESET EXISTING SIGNS	EACH	5
*	16	REMOVE EXISTING SIGNS	EACH	2
*	17	NEW SIGNING	EACH	2
	18	4" PAVEMENT MARKING	FOOT	4200
	19	12" PAVEMENT MARKING	FOOT	1000
	20	PAVEMENT MARKING SYMBOL	SQ FT	51
	21	MOBILIZATION	L SUM	1
*	22	CONSTRUCTION LAYOUT	L SUM	1
*	23	TRAFFIC CONTROL AND PROTECTION, (SPECIAL)	L SUM	1

ALTERNATE BID #1 - EAST PARKING LOT				
*	1	TREE REMOVAL	L SUM	1
*	2	FURNISHED EXCAVATION (TOP SOIL)	CY	250
*	3	PORTLAND CEMENT CONCRETE PAVEMENT - 7 INCH	SQ YD	40
	4	HOT-MIX ASPHALT SURFACE COURSE (MIX C N50)	TON	10
	5	HOT-MIX ASPHALT BASE COURSE (MIX C N50)	TON	15
*	6	AGGREGATE BASE COURSE, CA-6	TON	400
*	7	INCIDENTAL HOT-MIX ASPHALT SURFACING	TON	60
*	8	PORTLAND CEMENT CONCRETE SIDEWALK	SQ FT	2184
	9	PORTLAND CEMENT CONCRETE CURB & GUTTER - B6.18	FOOT	1342
*	10	RESEAL EXISTING HOT-MIX ASPHALT PARKING LOT	SY	1237
	11	DETECTABLE WARNINGS	SQ FT	100
*	12	PAVEMENT AND CURB REMOVAL	SQ YD	1416
*	13	2" HDPE CONDUIT	FOOT	300
*	14	REMOVE AND RESET EXISTING SIGNS	EACH	5
	15	4" PAVEMENT MARKING	FOOT	1000
	16	PAVEMENT MARKING SYMBOL	SQ FT	19
	17	MOBILIZATION	L SUM	1
*	18	CONSTRUCTION LAYOUT	L SUM	1
*	19	TRAFFIC CONTROL AND PROTECTION, (SPECIAL)	L SUM	1

* SPECIAL PROVISION PROVIDED

HENEGHAN & ASSOCIATES, P.C.



ENGINEERS-SURVEYORS

www.haengr.com

DESIGN FIRM NUMBERS:
IL: 184-002692, EXPIRES APRIL 30, 2021
MO: 001310, EXPIRES DECEMBER 31, 2021

1004 STATE HWY. 16
JERSEYVILLE, IL 62052
P: (618) 498-6418
F: (618) 498-6410

838 EAST McCORD STREET
CENTRALIA, IL 62001
P: (618) 533-6625
F: (618) 533-6652

310A VISION DRIVE
COLUMBIA, IL 62236
P: (618) 281-8133
F: (618) 281-8290

1929 RICHARDSON ROAD
ARNOLD, MO 63010
P: (636) 464-3610
F: (636) 464-2059

REVISIONS						
DATE						
NO.						

GENERAL NOTES

EAST PEARL STREET PARKING LOT IMPROVEMENTS

CITY OF JERSEYVILLE
JERSEY COUNTY, ILLINOIS

DRAWN BY: EAS
CHECKED BY: CAW
APPROVED BY: CAW

HORIZONTAL SCALE:
N/A

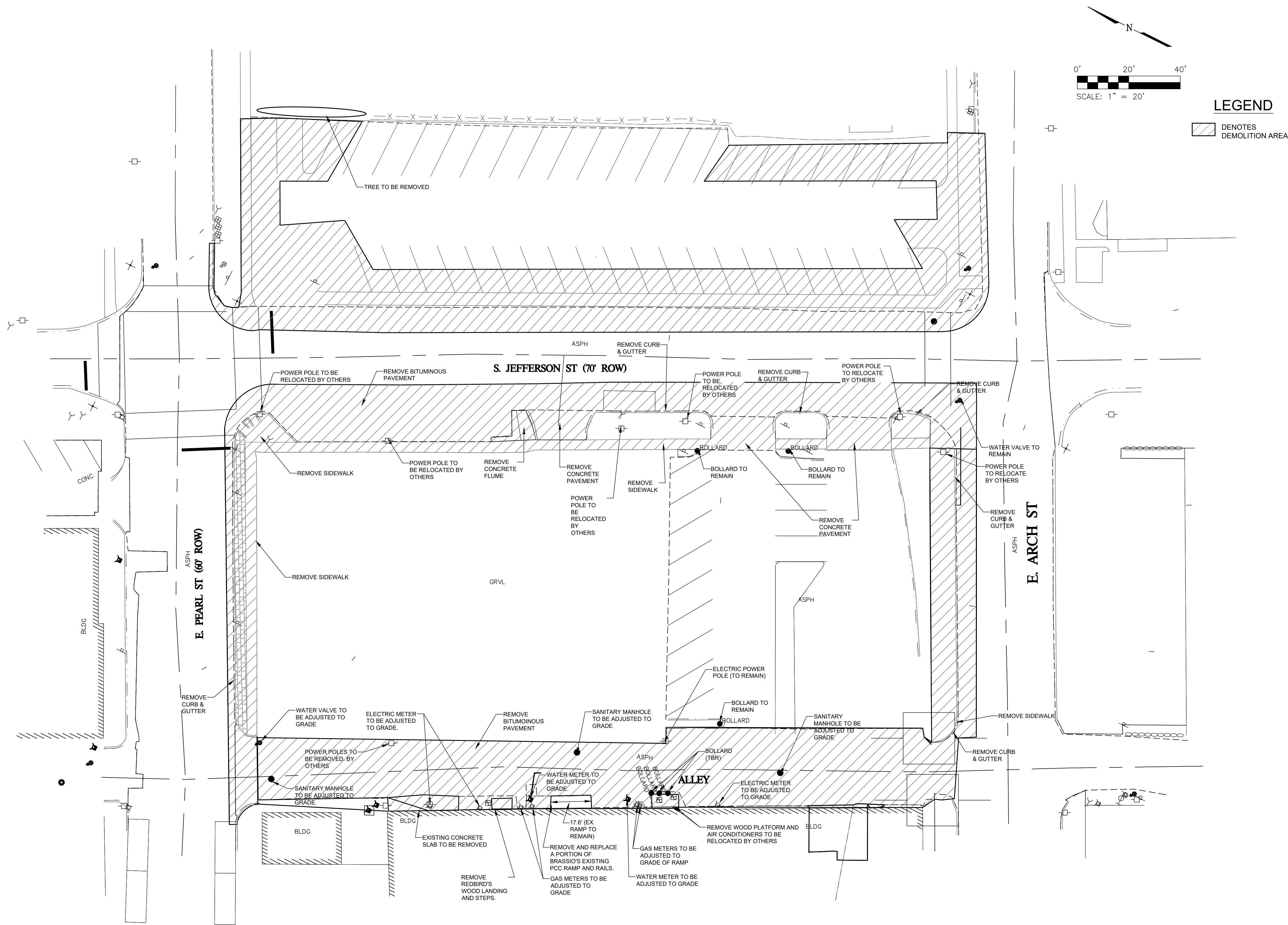
VERTICAL SCALE:
N/A

PROJECT NO.
00140-337

DATE:
02/24/21

SHEET NO.
3

3 OF 9 SHEETS



HENEGHAN &
ASSOCIATES, P.C.

HA
ENGINEERS-SURVEYORS
www.haengr.com

DESIGN FIRM NUMBERS:
IL: 184-002692, EXPIRES APRIL 30, 2021
MO: 001310, EXPIRES DECEMBER 31, 2021

■ 1004 STATE HWY. 16
JERSEYVILLE, IL 62052
P: (618) 498-6418
F: (618) 498-6410

□ 838 EAST McCORD STREET
CENTRALIA, IL 62801
P: (618) 533-6525
F: (618) 533-6652

□ 310A VISION DRIVE
COLUMBIA, IL 62236
P: (618) 281-8133
F: (618) 281-8290

□ 1929 RICHARDSON ROAD
ARNOLD, MO 63010
P: (636) 464-3610
F: (636) 464-2059

NO.	DATE	REVISIONS

--	--	--	--	--	--

DEMOLITION PLAN	EAST PEARL STREET PARKING LOT IMPROVEMENTS
CITY OF JERSEYVILLE JERSEY COUNTY, ILLINOIS	

DRAWN BY: EAS
CHECKED BY: CAW
APPROVED BY: JAL

HORIZONTAL SCALE:
1"=20'

VERTICAL SCALE:
N/A

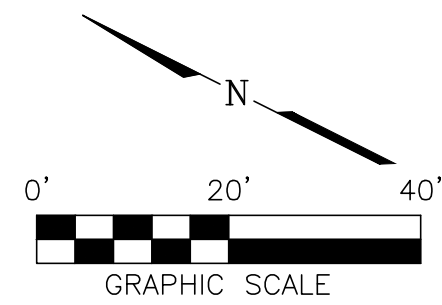
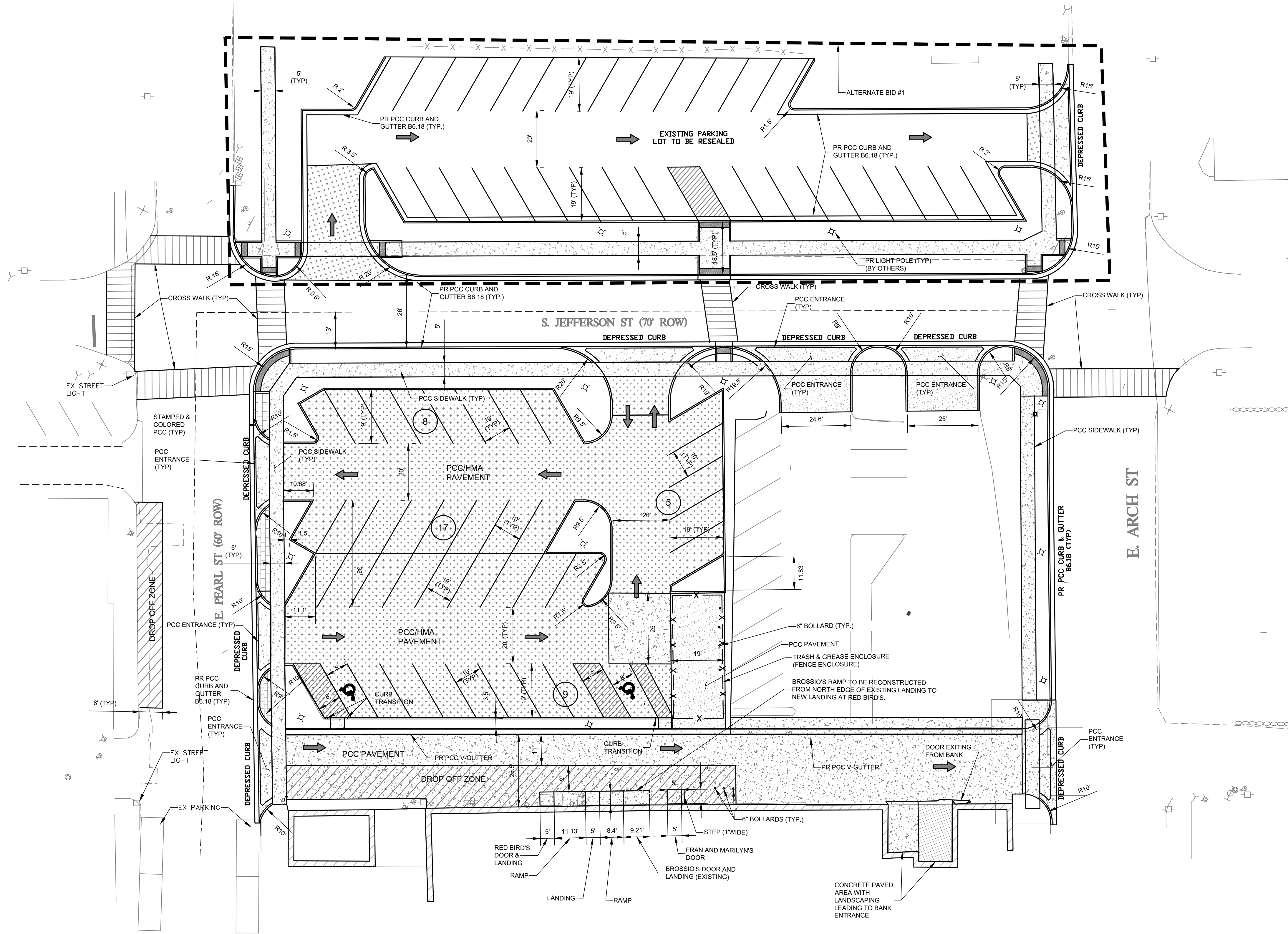
PROJECT NO.
00140-337

DATE:
02/24/21

SHEET NO.
4

4 OF 9 SHEETS

P:\H:\shared\clients\00140 - jerseyville, city\337 - downtown parking lot\cad\dwg\civil\140-337 site - revised.dwg
PLOTTER: 2/24/2021 3:04:33 PM BY: jst. gdm



HENEGHAN &
ASSOCIATES, P.C.



ENGINEERS-SURVEYORS
www.haengr.com

DESIGN FIRM NUMBERS:
IL: 184-002692, EXPIRES APRIL 30, 2021
MO: 001310, EXPIRES DECEMBER 31, 2020

1004 STATE HWY. 16
JERSEYVILLE, IL 62052
P: (618) 498-6418
F: (618) 498-6410

838 EAST McCORD STREET
CENTRALIA, IL 62801
P: (618) 533-6525
F: (618) 533-6652

310A VISION DRIVE
COLUMBIA, IL 62236
P: (618) 281-8133
F: (618) 281-8290

1929 RICHARDSON ROAD
ARNOLD, MO 63010
P: (636) 464-3610
F: (636) 464-2059

NO.	DATE	REVISIONS

SITE PLAN
EAST PEARL STREET PARKING LOT
IMPROVEMENTS

CITY OF JERSEYVILLE
JERSEY COUNTY, ILLINOIS

DRAWN BY: EAS
CHECKED BY: CAW
APPROVED BY: JAL

HORIZONTAL SCALE:
1"=20'

VERTICAL SCALE:
N/A

PROJECT NO.
00140-337

DATE:
02/24/2021

SHEET NO.
5

5 OF 9 SHEETS

NO.	DATE	REVISIONS

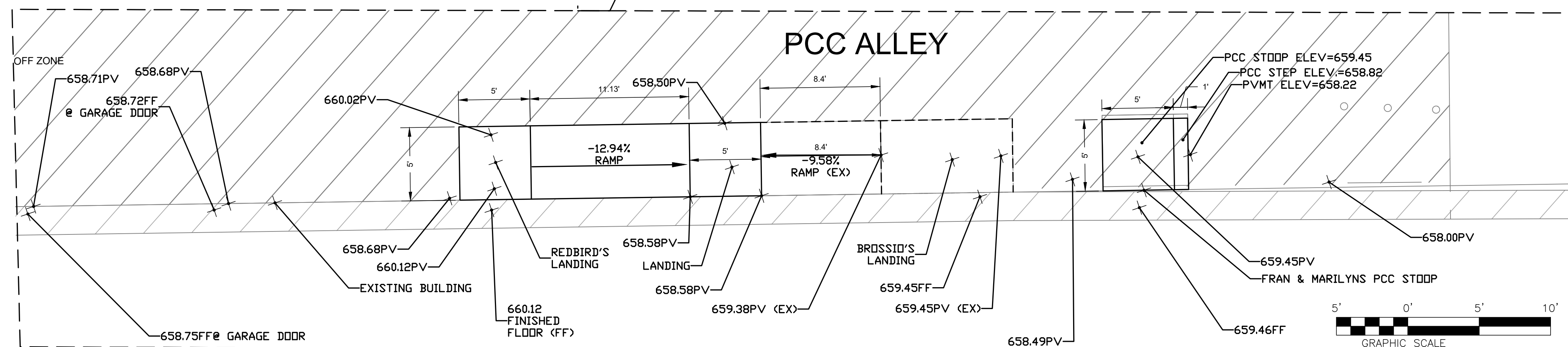
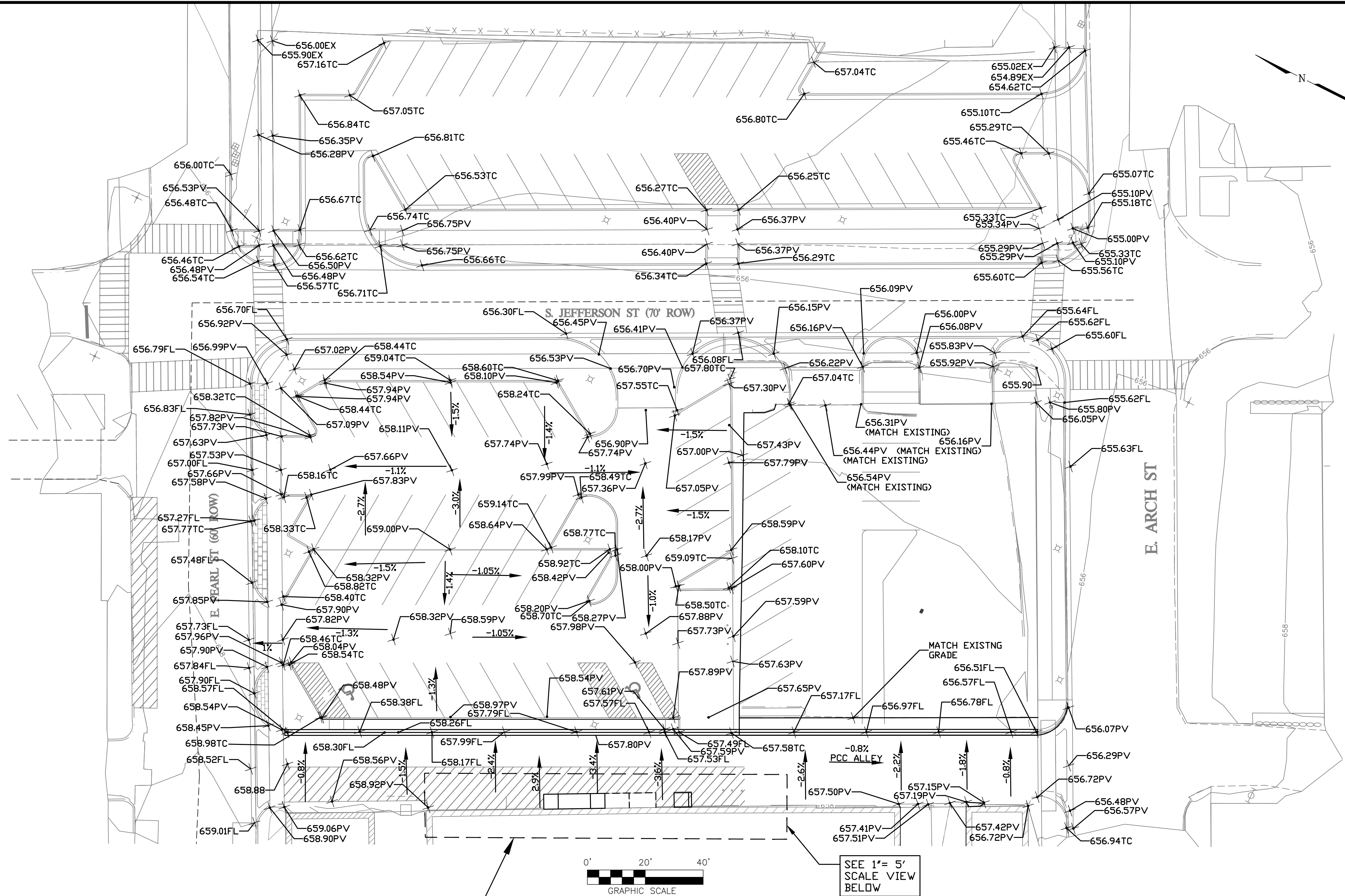
CITY OF JERSEYVILLE
JERSEY COUNTY, ILLINOIS

HORIZONTAL SCALE:
1"=20'

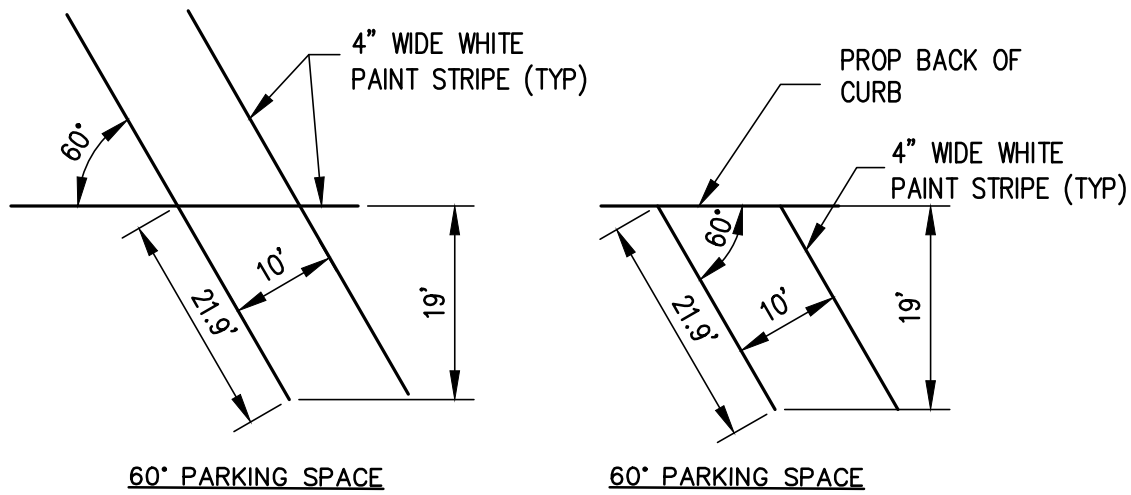
PROJECT NO.	00140-337
-------------	-----------

SHEET NO.	6
-----------	---

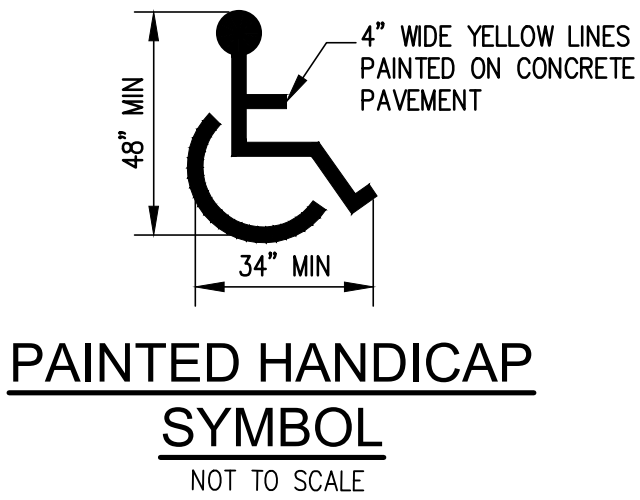
6 OF 9 SHEETS



P:\T:\as\shared\clients\00140 - jerseyville, city\337 - downtown parking lot\cad\dwg\city\jerseyville parking lot.dwg
PLOTTER: 2/24/2024 8:38:24 AM BY: lrt, cdm



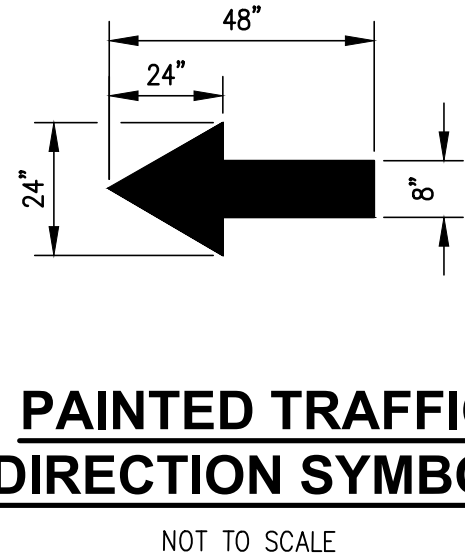
TYPICAL PARKING STALL LAYOUT
NOT TO SCALE



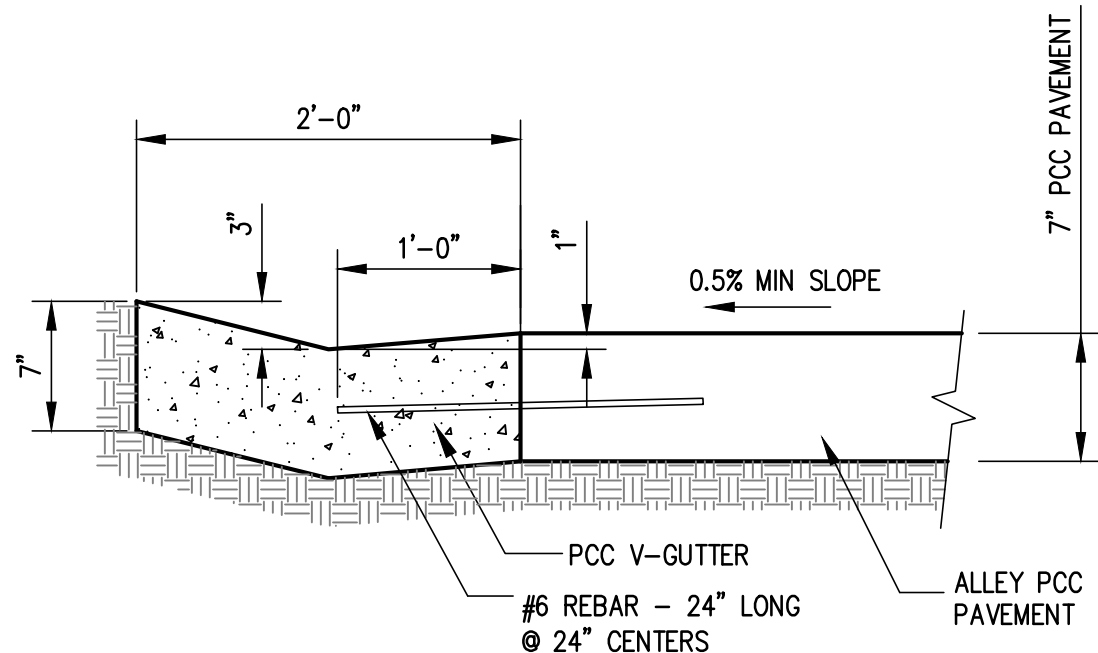
PAINTED HANDICAP SYMBOL
NOT TO SCALE



TYPICAL HANDICAP PARKING STALL LAYOUT
NOT TO SCALE

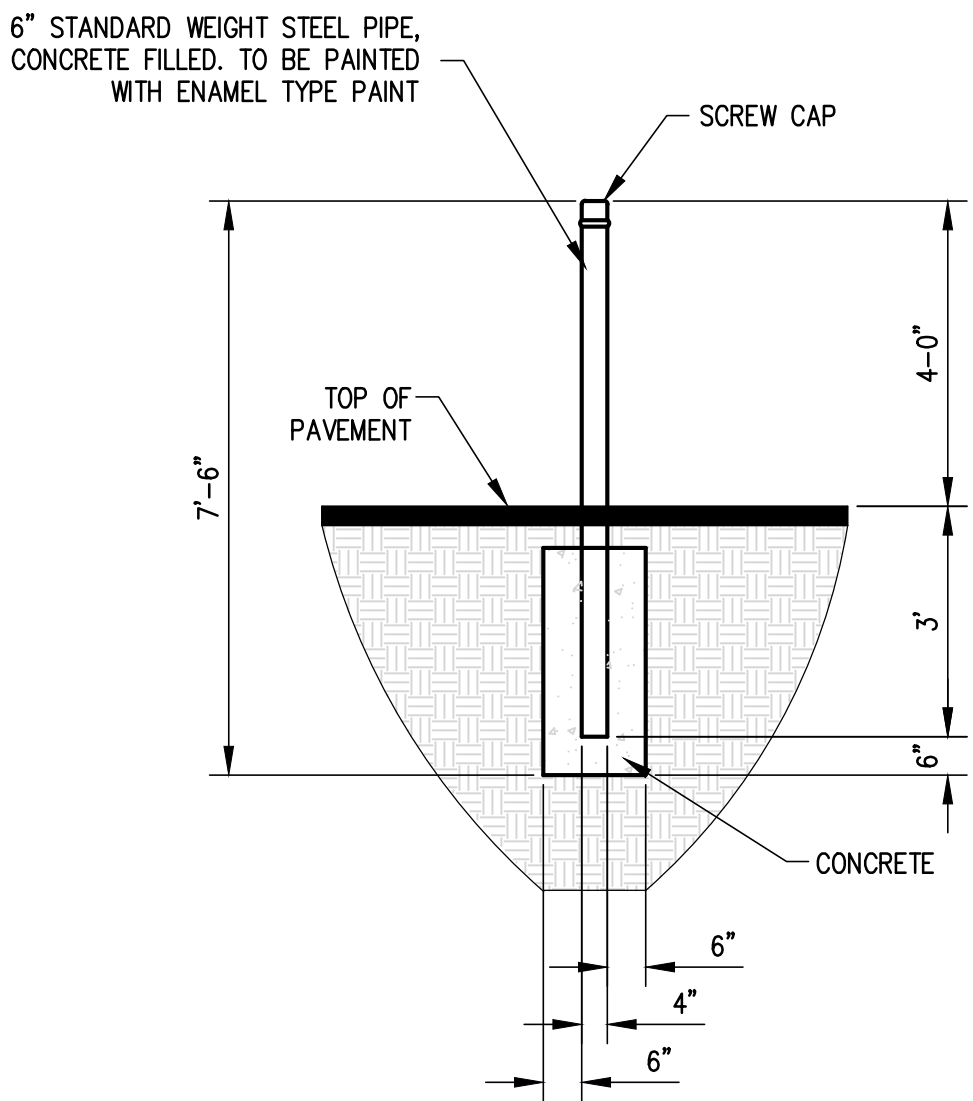


PAINTED TRAFFIC DIRECTION SYMBOL
NOT TO SCALE

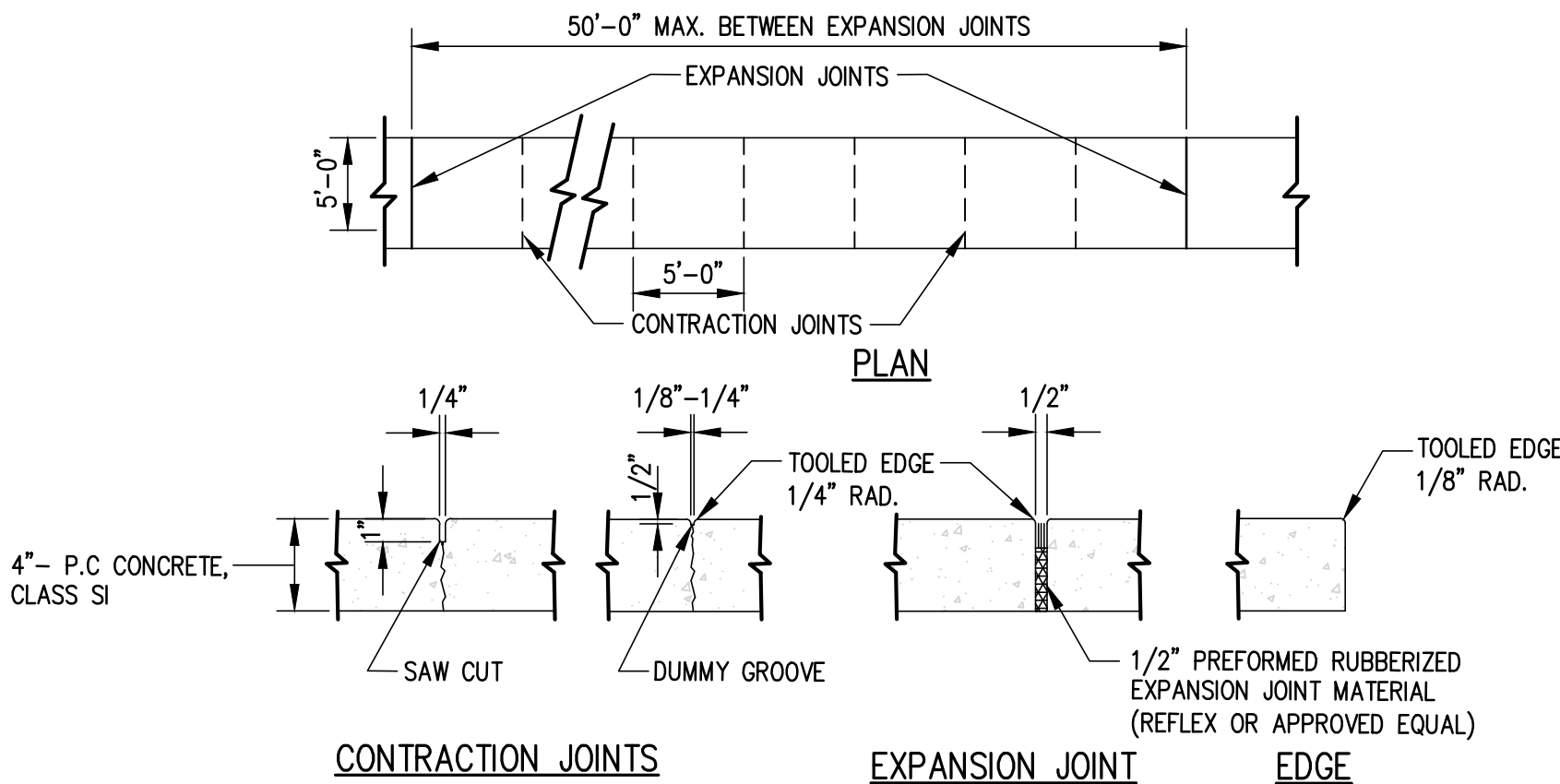


NOTE: THE V-GUTTER 3" DEPTH SHALL BE DECREASED TO 1" WHERE ADA SIDEWALKS MEET THE EDGE OF THE GUTTER. (THE TRANSITION FROM 3" TO 1" SHALL BE DONE IN 1' DISTANCE FROM EDGE OF SIDEWALK)

PCC V-GUTTER DETAIL
SCALE: NONE



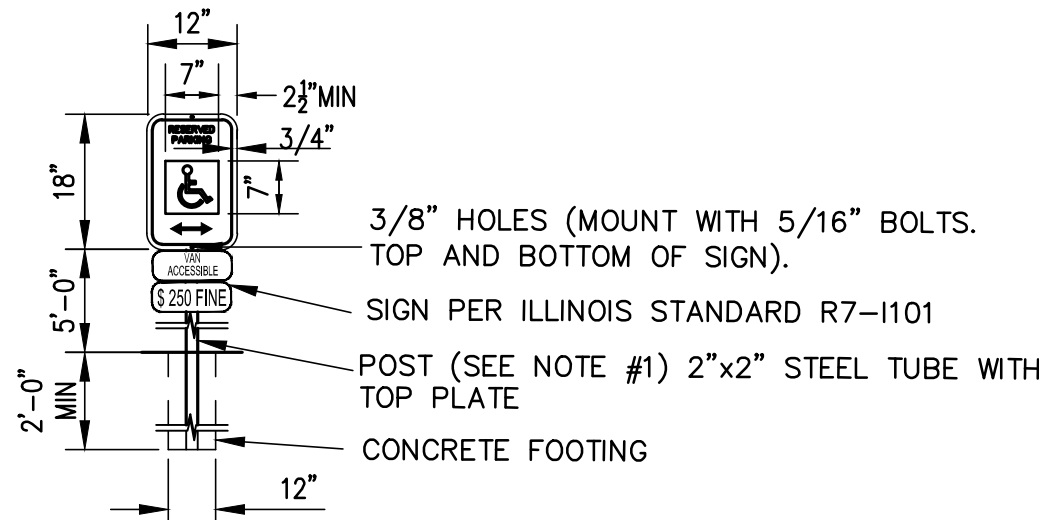
BOLLARD DETAIL
SCALE: NONE



NOTES:
1. SIDEWALK SHALL BE 7" THICK THROUGH DRIVEWAYS AND TO A POINT 5 FEET ON BOTH SIDES OF THE DRIVEWAYS.
2. ALL HANDICAP RAMPS SHALL HAVE A THICKNESS OF 6".

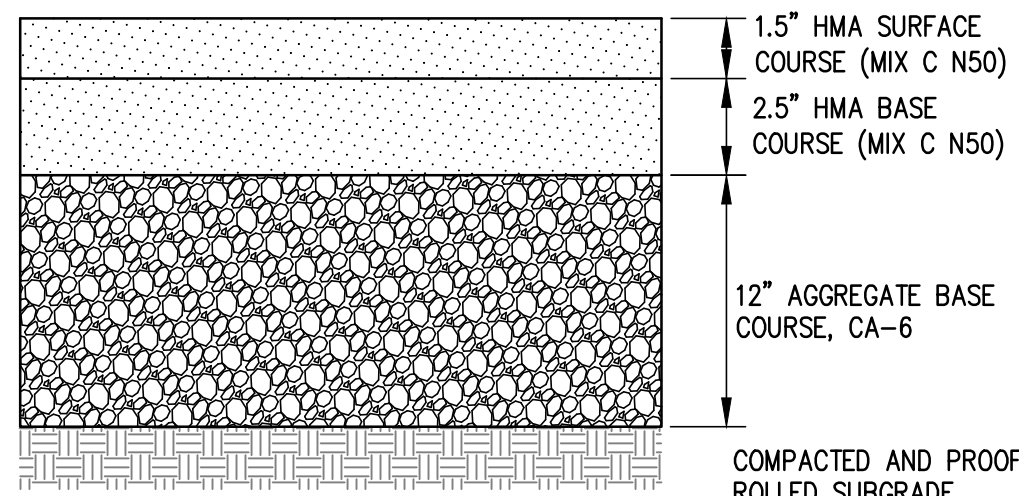
CONCRETE SIDEWALK
SCALE: NONE

SIGN TYPE R7-8 U.S. DEPARTMENT OF TRANSPORTATION TYPES

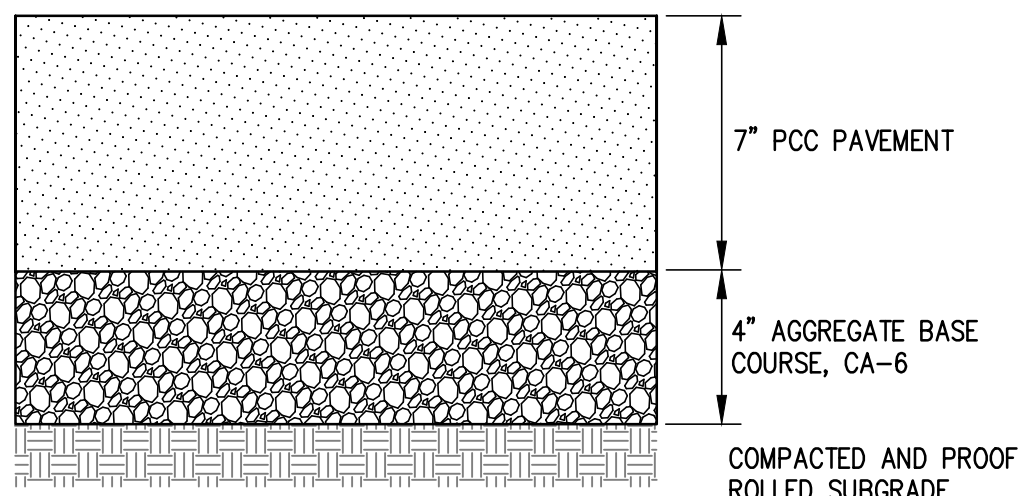


- NOTES:
1. METAL POST AND ALL HARDWARE SHALL BE GALVANIZED STEEL, ASTM A307-90.
 2. POST HOLES SHALL BE FILLED WITH GRANULAR BACK FILL IN 3-INCH TO 4-INCH LIFTS. THOROUGHLY HAND TAMP EACH LIFT AND CROWN BACK FILL AT TOP TO SHED WATER.
 3. CONCRETE FOR FOOTING SHALL BE PORTLAND CEMENT AND HAVE A MINIMUM COMPRESSIVE STRENGTH OF 3000 PSI.
 4. SIGNS SHALL BE CONSTRUCTED OF ALUMINUM, TYPE 6061-T6 AND IN CONFORMANCE WITH ASTM STD B-209. THICKNESS SHALL BE 0.80 INCHES.
 5. TOP EDGE TREATMENT FILM SHALL BE 3" WIDE, CLEAR AND TRANSPARENT WITH A SUB-RESISTANT PRESSURE SENSITIVE NON-YELLOWING ADHESIVE, "SKOTCHCAL" TRANSPARENT FILE #639 OR APPROVED EQUAL.
 6. REFLECTIVE FACING MATERIAL SHALL BE SCOTCHLITE HIGH INTENSITY, MANUFACTURED BY 3M COMPANY OR APPROVED EQUAL.
 7. SIGN LETTERING SHALL BE NPS MODIFIED CLARENDON TYPEFACE. UPPERCASE LETTERS SHALL BE 3.75" HEIGHT AND LOWERCASE LETTERS SHALL BE 2.5" HEIGHT WITH 3.75" SPACING BETWEEN LINES.
 8. CORNER RADIUS OF SIGNS SHALL BE 2.5"
 9. ARROWS SHALL BE 5.625" LONG BY 3.75" HIGH. SEE SHEET 5 FOR LOCATION OF SIGNS.

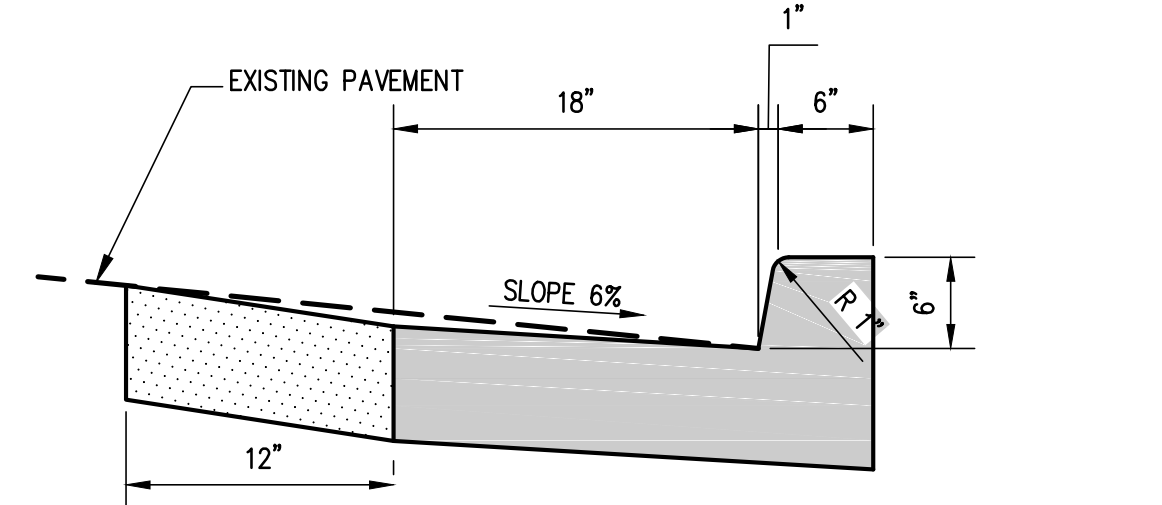
ADA PARKING SIGN
NOT TO SCALE



HMA PARKING PAVEMENT DETAIL
NOT TO SCALE

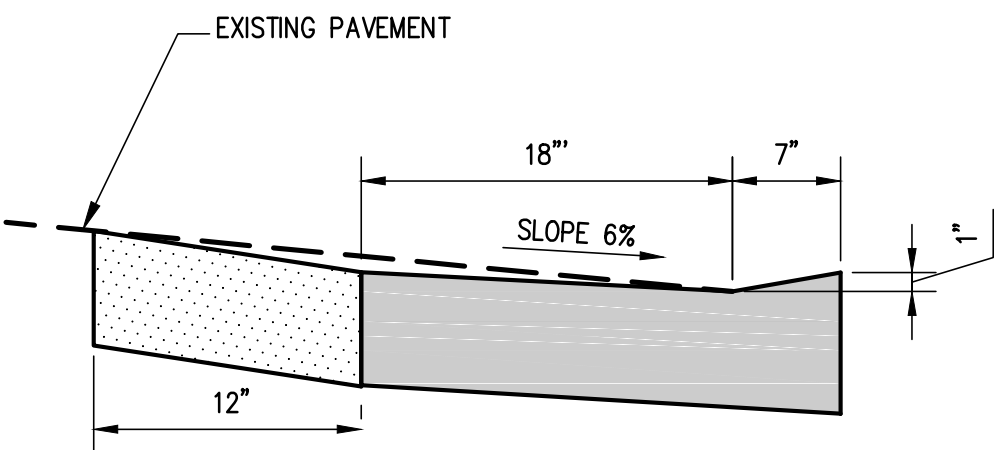


NOTE: THIS DETAIL WILL ALSO BE USED FOR TRASH PAD AND TRASH PAD APPROACH PAVEMENT.
PCC ALLEY PAVEMENT DETAIL
NOT TO SCALE



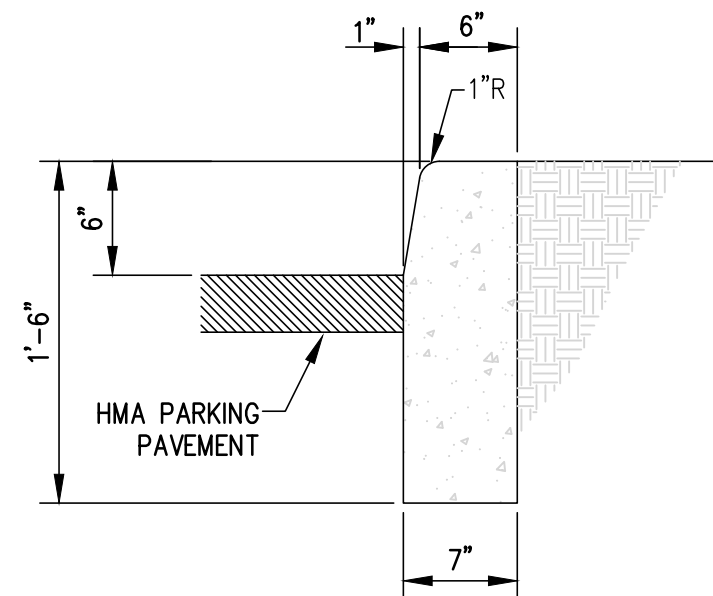
NOTE: THE EXISTING PAVEMENT SHALL BE REMOVED FOR CURB & GUTTER CONSTRUCTION AND REPLACED WITH FULL DEPTH HMA PAVEMENT.

BARRIER CURB & GUTTER B-6.18 DETAIL
NOT TO SCALE



NOTE: THE EXISTING PAVEMENT SHALL BE REMOVED FOR CURB & GUTTER CONSTRUCTION AND REPLACED WITH FULL DEPTH HMA PAVEMENT.

DEPRESSED CURB & GUTTER DETAIL
NOT TO SCALE



- NOTES:
1. CURB TO BE CONSTRUCTED IN 10-FOOT LENGTHS. 1/2 INCH EXPANSION JOINT SHALL BE PROVIDED AT INTERVALS
 2. NOT TO EXCEED 50 FEET, AT THE ENDS AND MIDPOINT OF RETURNS, AND AT ANY POINT WHERE THE NEW CURB ABUTS OTHER CONCRETE STRUCTURES.
 3. THIS DETAIL WILL BE USED FOR CURBS IN THE PARKING LOT.
 4. THE CURB HEIGHT WILL MATCH THE PAVEMENT ELEVATION IN THE PARKING LOT ADJACENT TO SIDEWALKS.
 5. THE CURB HEIGHT WILL TRANSITION FROM 6" TO 0" IN A 2' LENGTH FROM THE EDGE OF THE SIDEWALKS.

CONCRETE CURB
SCALE: NONE

HENEGHAN & ASSOCIATES, P.C.

HA
ENGINEERS-SURVEYORS
www.haenr.com

DESIGN FIRM NUMBERS:
IL: 184-002692, EXPIRES APRIL 30, 2021
MO: 001310, EXPIRES DECEMBER 31, 2021

1004 STATE HWY. 16
JERSEYVILLE, IL 62052
P: (618) 498-6418
F: (618) 498-6410

838 EAST McCORD STREET
CENTRALIA, IL 62801
P: (618) 533-6525
F: (618) 533-6652

310A VISION DRIVE
COLUMBIA, IL 62236
P: (618) 281-8133
F: (618) 281-8290

1929 RICHARDSON ROAD
ARNOLD, MO 63010
P: (636) 464-3610
F: (636) 464-2059

REVISIONS					
DATE					
NO.					

DETAILS
EAST PEARL STREET PARKING LOT IMPROVEMENTS

CITY OF JERSEYVILLE
JERSEY COUNTY, ILLINOIS

DRAWN BY: EAS
CHECKED BY: CAW
APPROVED BY: CAW

HORIZONTAL SCALE:
N/A

VERTICAL SCALE:
N/A

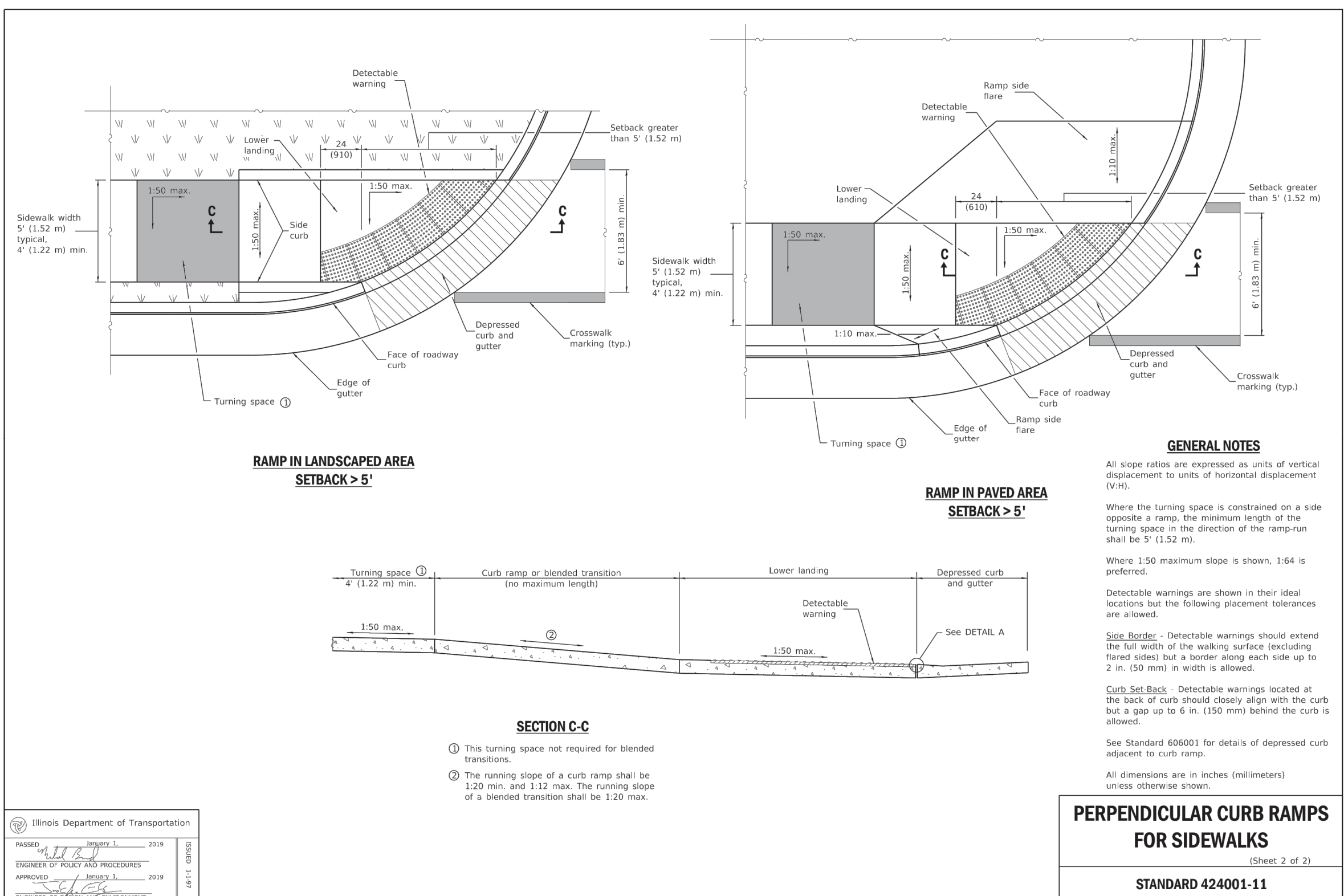
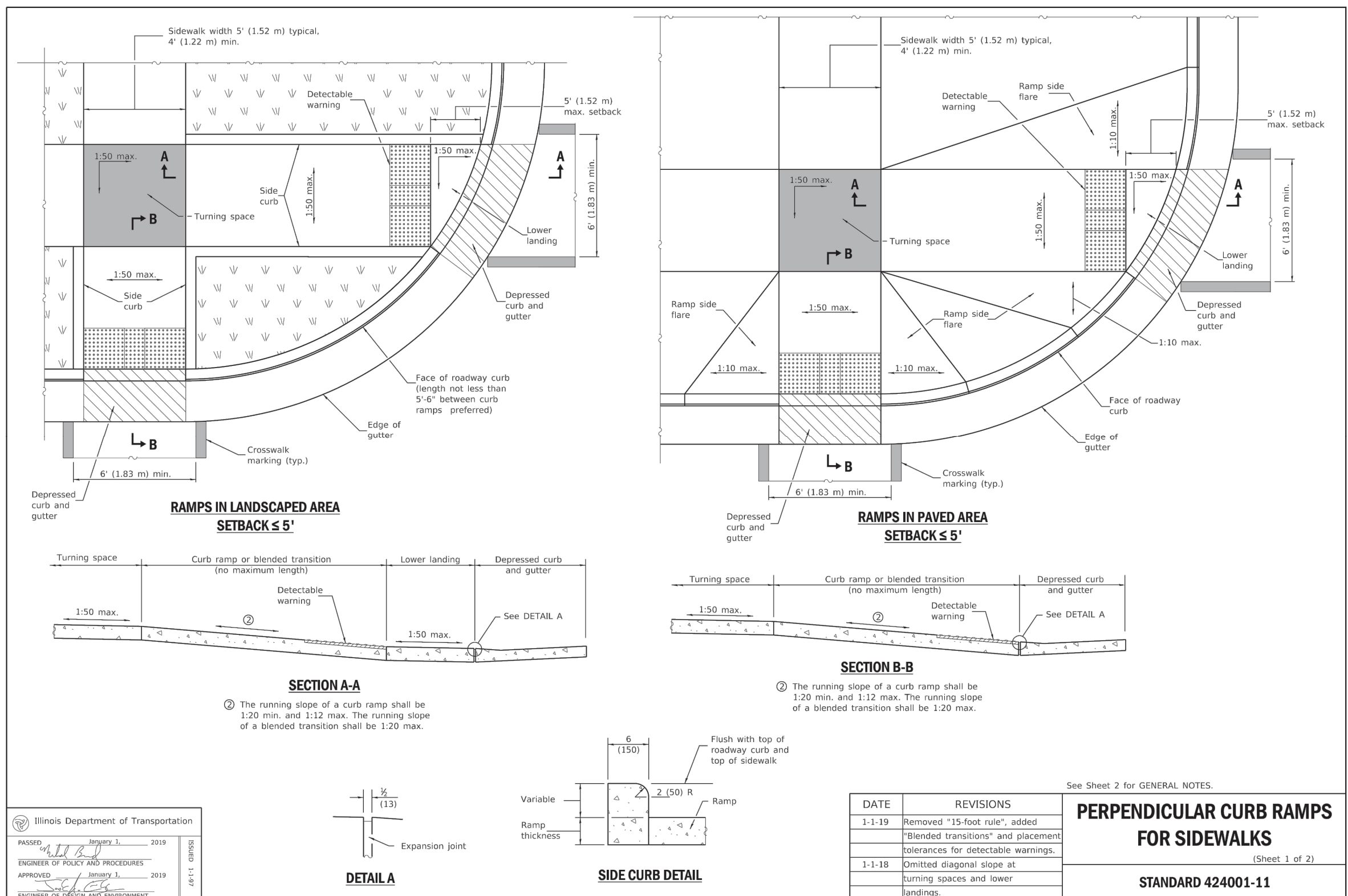
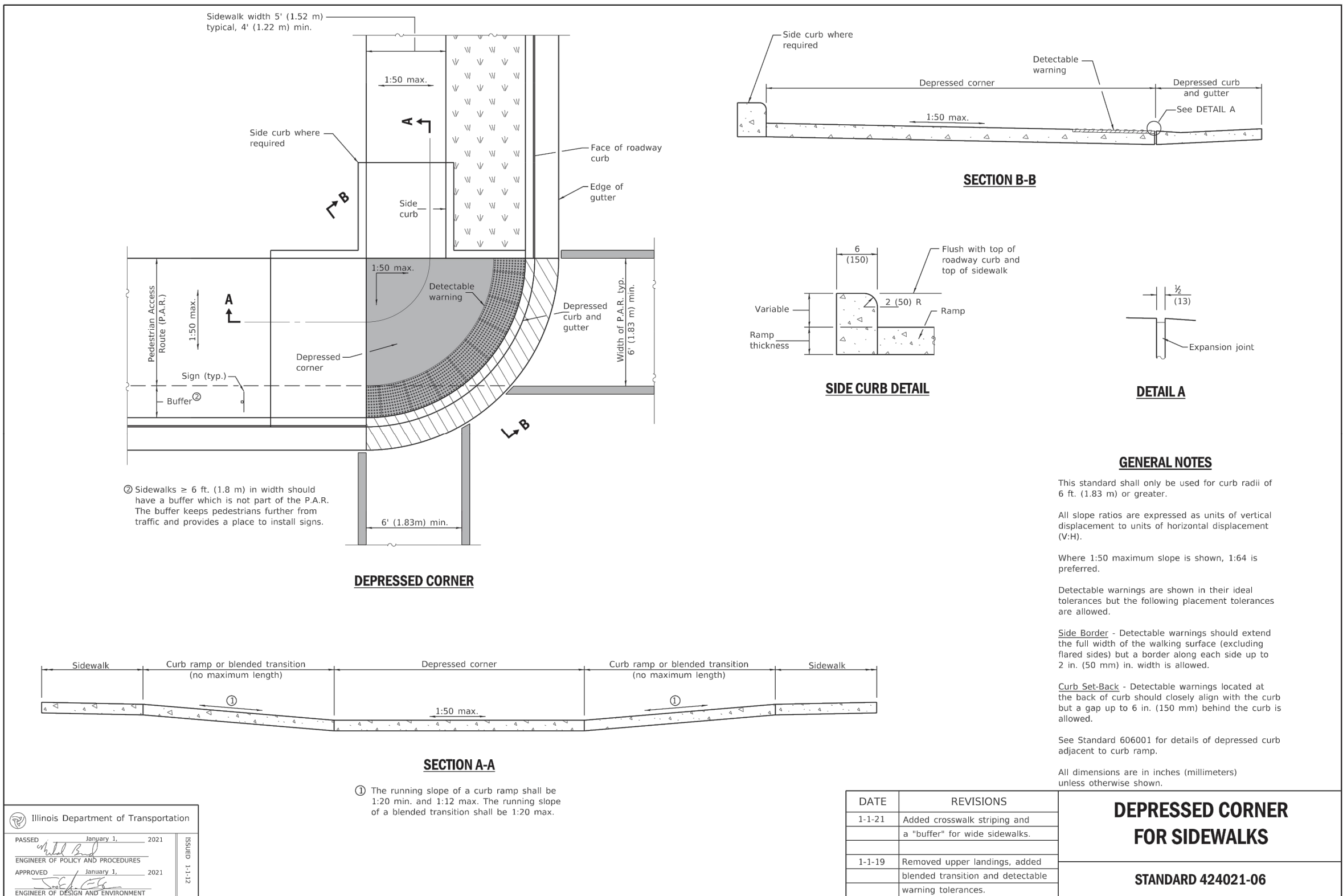
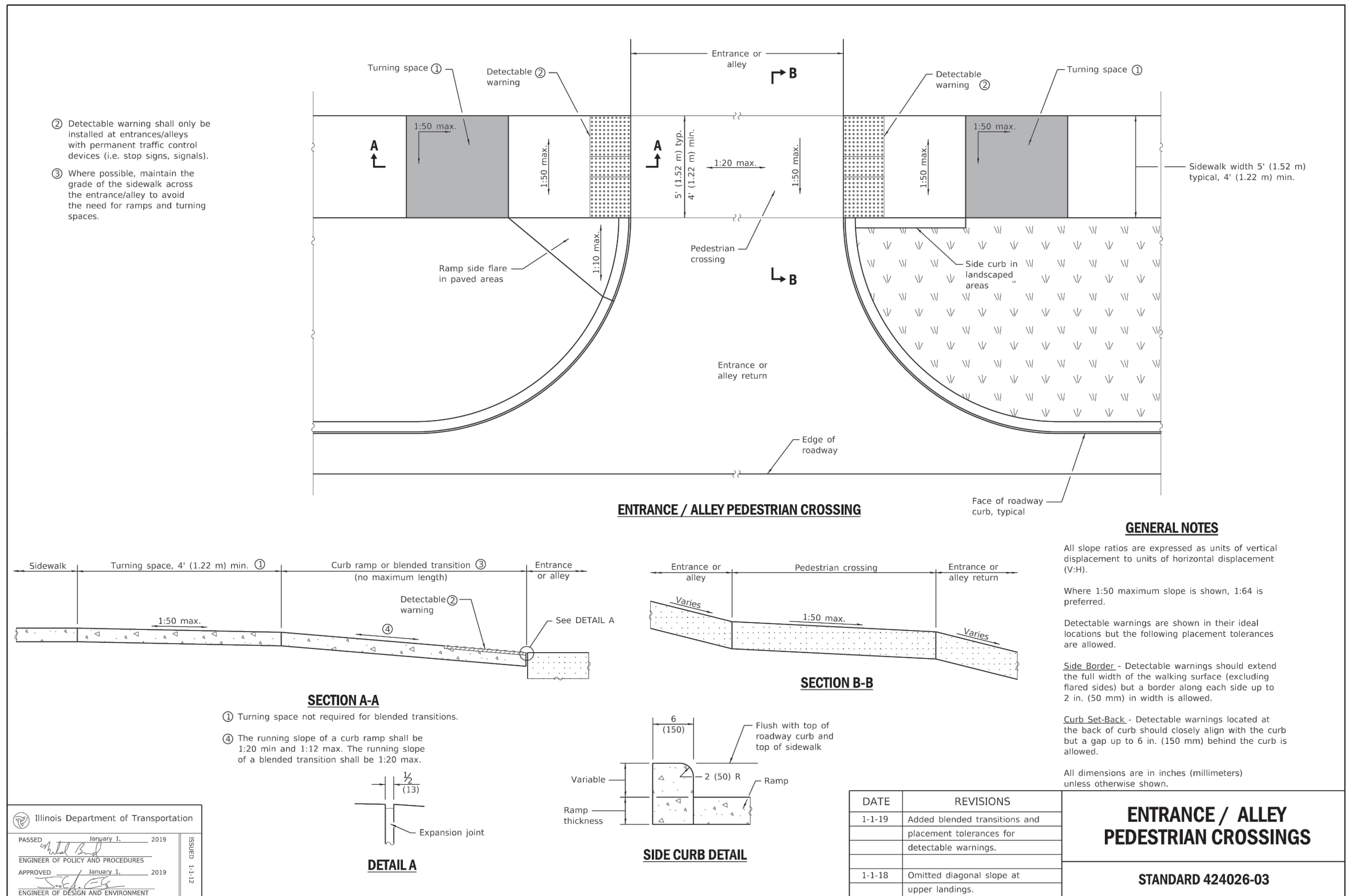
PROJECT NO.
00140-337

DATE:
02/24/21

SHEET NO.
7

7 OF 9 SHEETS

P:\T:\as\shared\clients\00140 - jerseyville, city\337 - downtown parking lot\cad\dwg\city\jerseyville parking lot.dwg -- downtown parking lot\cad\dwg\city\jerseyville parking lot.dwg
PLOTED: 2/24/2024 @ 1:48:20 PM BY: ltt, cdm



NOT TO SCALE

HENEGHAN & ASSOCIATES, P.C.

HA
ENGINEERS-SURVEYORS
www.haengr.com

DESIGN FIRM NUMBERS:
IL: 184-002692, EXPIRES APRIL 30, 2021
MO: 001310, EXPIRES DECEMBER 31, 2021

1004 STATE HWY. 16
JERSEYVILLE, IL 62052
P: (618) 498-6418
F: (618) 498-6410

838 EAST McCORD STREET
CENTRALIA, IL 62801
P: (618) 533-6625
F: (618) 281-8290

310A VISION DRIVE
COLUMBIA, IL 62236
P: (618) 281-8133
F: (618) 281-8290

1929 RICHARDSON ROAD
ARNOLD, MO 63010
P: (636) 464-3610
F: (636) 464-2059

REVISIONS				
DATE				
NO.				

DETAILS
EAST PEARL STREET PARKING LOT
IMPROVEMENTS
CITY OF JERSEYVILLE
JERSEY COUNTY, ILLINOIS

DRAWN BY: EAS
CHECKED BY: CAW
APPROVED BY: CAW

HORIZONTAL SCALE:
N/A

VERTICAL SCALE:
N/A

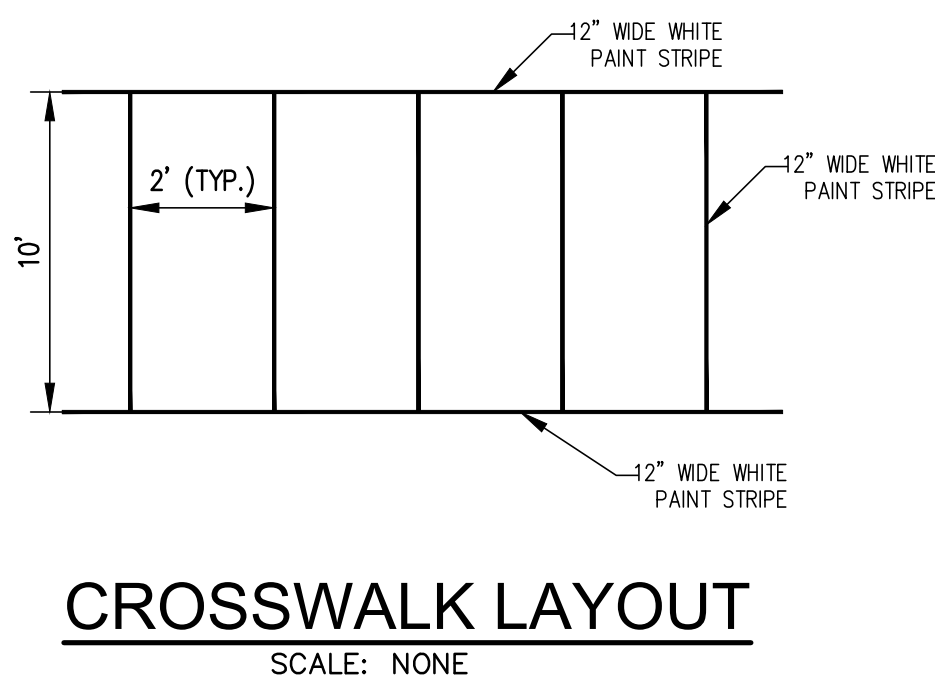
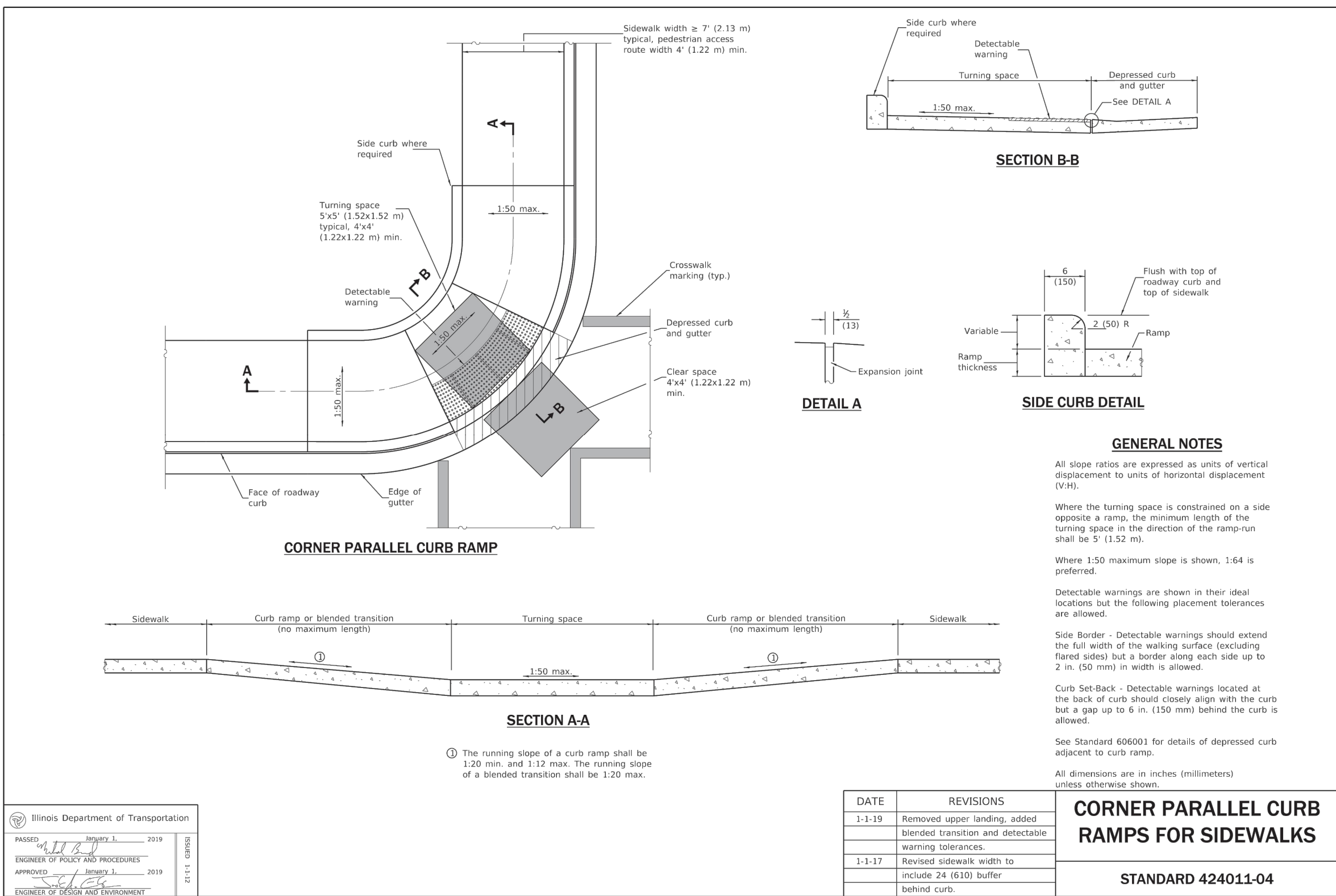
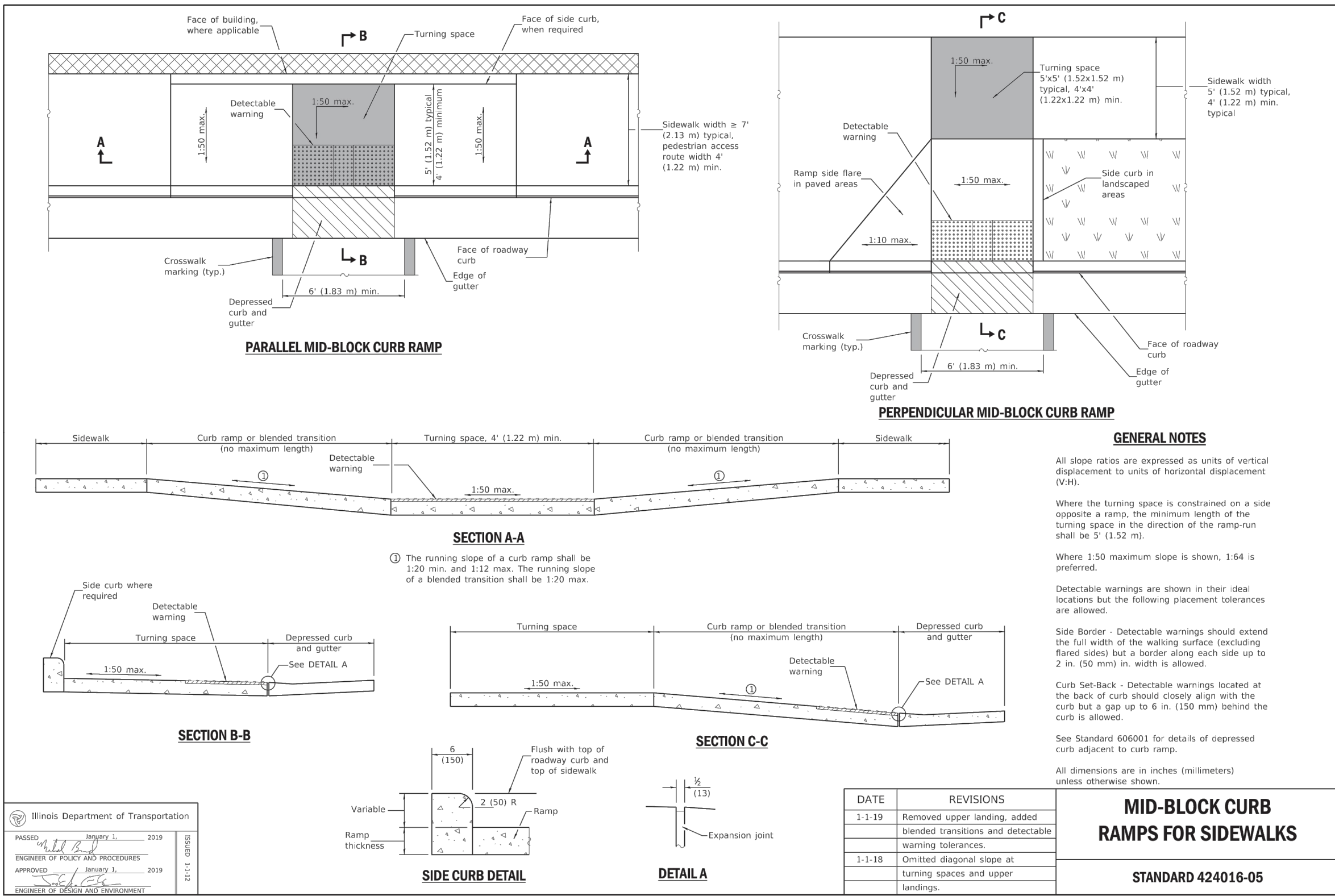
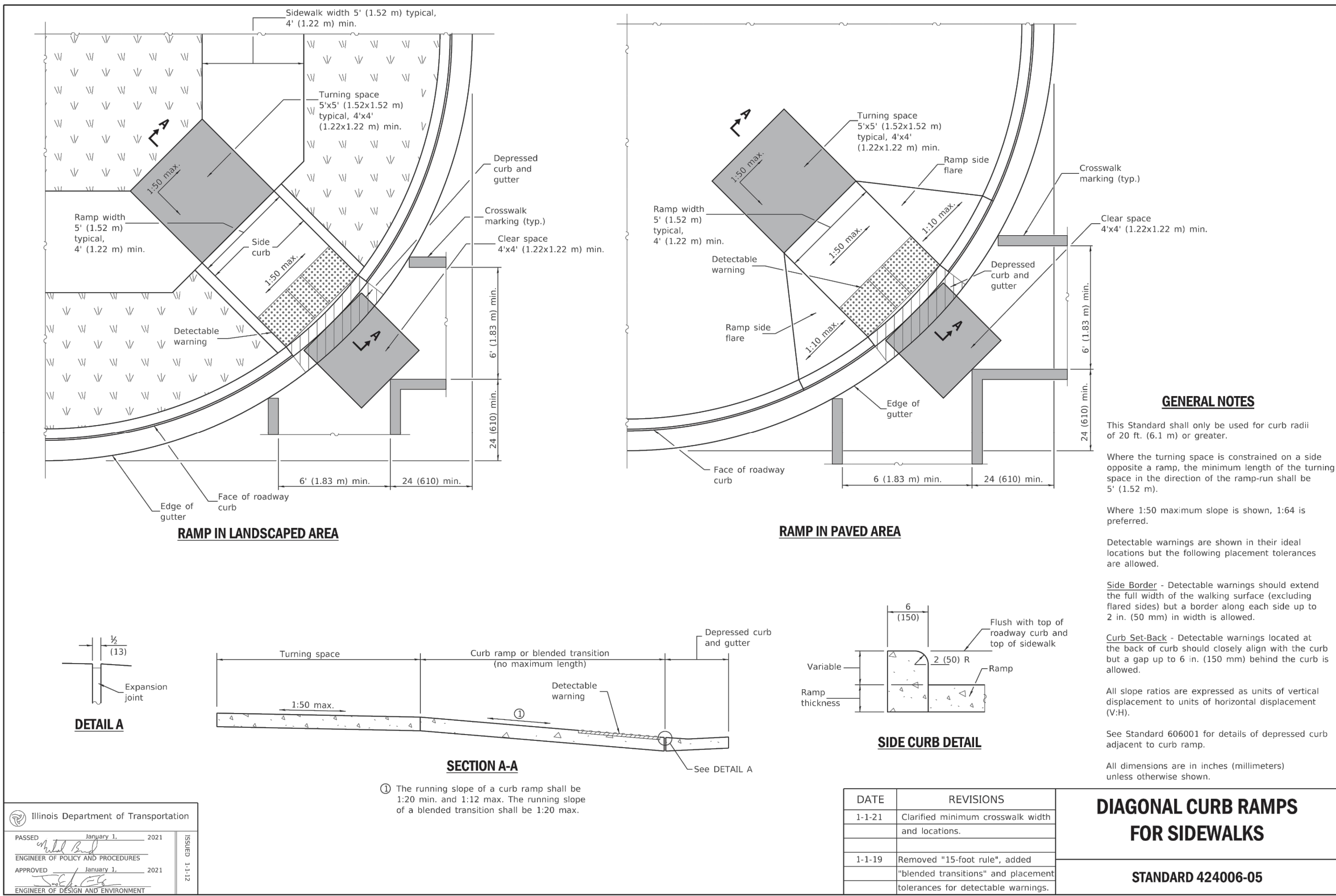
PROJECT NO.
00140-337

DATE:
02/24/21

SHEET NO.
8

8 OF 9 SHEETS

PATH: c:\users\jerry\documents\00140 - jerseyville, city\337 - downtown parking lot\cad\dwg\city\jerseyville parking lot.dwg
PLOTED: 2/24/2024 1:48:15 PM BY: jerry



HENEGHAN & ASSOCIATES, P.C.
HA
ENGINEERS-SURVEYORS
www.haengr.com

DESIGN FIRM NUMBERS:
IL: 184-002692, EXPIRES APRIL 30, 2021
MO: 001310, EXPIRES DECEMBER 31, 2021

■ 1004 STATE HWY. 16
JERSEYVILLE, IL 62052
P: (618) 498-6418
F: (618) 498-6410

□ 838 EAST McCORD STREET
CENTRALIA, IL 62801
P: (618) 533-6625
F: (618) 533-6652

□ 310A VISION DRIVE
COLUMBIA, IL 62236
P: (618) 281-8133
F: (618) 281-8290

□ 1929 RICHARDSON ROAD
ARNOLD, MO 63010
P: (636) 464-3610
F: (636) 464-2059

REVISIONS	DATE	NO.		

DETAILS
EAST PEARL STREET PARKING LOT
IMPROVEMENTS

CITY OF JERSEYVILLE
JERSEY COUNTY, ILLINOIS

DRAWN BY: EAS
CHECKED BY: CAW
APPROVED BY: CAW

HORIZONTAL SCALE:
N/A

VERTICAL SCALE:
N/A

PROJECT NO.
00140-337

DATE:
02/24/21

SHEET NO.
9

9 OF 9 SHEETS