



HENEGHAN AND ASSOCIATES, P.C.

CIVIL ENGINEERS • LAND SURVEYORS

WWW.HAENGR.COM

Since 1986

Addendum No. 1

for

South Side Ditch Drainage Improvements – Phase 1

For City of Litchfield
Montgomery County, Illinois

H&A File No. 2134-301
October 16, 2020

The Contract Documents prepared by Heneghan & Associates, P.C. for the South Side Ditch Drainage Improvements – Phase 1 for the City of Litchfield, Illinois, are hereby amended or clarified as follows:

GENERAL

Attached, find the Pre-Bid meeting Minutes and attendance sheet from the Pre-Bid meeting held October 14, 2020, 10:00 am at City Hall in Litchfield, Illinois. The Minutes are made a part of this Addendum, and the items stated in the Minutes shall be followed.

PROJECT SPECIFICATIONS

Changes/additions/clarifications to the project specifications are as listed below:

Bid Form: A REVISED BID FORM is included with the addendum, only bids submitted on this REVISED BID FORM will be accepted.

Special Provisions:

1. The contractor shall provide bypassing and/or pump out the lift station while the force main is out of service for adjustment as part of the project. The cost for bypassing or pumping shall be included in the SANITARY SEWER FORCE MAIN ADJUSTMENT pay item and no additional compensation will be allowed.
2. Add special provision for pavement patch on Tyler Ave.

PORTLAND CEMENT CONCRETE ROADWAY PAVEMENT

The existing HMA roadway shall be repaired with Portland Cement Concrete (PCC) pavement as disturbed by the CONTRACTOR and shall be repaired with 8" of PCC (or existing roadway pavement thickness, whichever is greater) per Section 423 of the Standard

□ 838 East McCord
Centralia, IL 62801
(P) 618-533-6525
(F) 618-533-6652

□ 310A Vision Drive
Columbia, IL 62236
(P) 618-281-8133
(F) 618-281-8290

□ 1004 State Highway 16
Jerseyville, IL 62052
(P) 618-498-6418
(F) 618-498-6410

□ 1929 Richardson Road
Arnold, MO 63010
(P) 636-464-3610
(F) 636-464-2059

"DEDICATING OUR SERVICES TO STRENGTHEN CLIENT TRUST"

Specifications for Road and Bridge Construction. The PCC shall meet the requirements of Class PV in Section 1020 of said Standard Specifications.

All work required by this Special Provision shall be in accordance with Section 423 of the Standard Specifications for Road and Bridge Construction, including the measurement and payment of the PORTLAND CEMENT CONCRETE ROADWAY PAVEMENT

PROJECT DRAWINGS

Changes/additions/clarifications to the project drawings are as listed below:

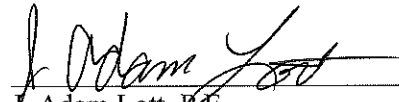
Sheet 3: Changed summary of quantities

Sheet 4: Changed storm sewer schedule

Sheet 8: Revised property owner information

Sheet 11: Revised pavement removal at storm sewer crossing on Tyler Ave. and added PCC roadway patch on Tyler Ave.

End of Addendum.


J. Adam Lott, P.E.
Project Engineer

City of Litchfield
South Side Ditch Drainage Improvements – Phase 1
Pre-Bid Meeting Agenda-Minutes
Wednesday, October 14, 10:00 A.M.
City of Litchfield

1. Introduce: A. Heneghan & Associates' Representatives – Adam Lott
 B. City of Litchfield Representatives – Art LeVoy and Dave Crocks
2. Please sign the Attendance Sheet.
3. Bid Opening: **Wednesday, October 21, 2020 @ 2:00 pm**, City of Litchfield, 120 East Ryder Street, Litchfield, Illinois and must be to attention: ~~Tonya Flannery, City Administrator~~ *Carol Burke, City Clerk*
 - a. Addendum must be acknowledged (Addendum will be emailed and mailed by Friday October 16, 2020).
 - b. 5% Bid Bond.
 - c. Must use prevailing wage rates listed in the specifications.
 - d. The City is tax exempt as a not for profit organization.
 - e. Hold bid prices for 90 days.
 - f. Engineer's estimate for Phase I is \$470,000 Alt #1 \$40,000
4. If the Bids are acceptable, a recommendation will be given to the City of Litchfield. If accepted, the Contract will be tentatively awarded at the City's November 5, 2020, Regular monthly board meeting. The CONTRACTOR will then have two weeks to execute the necessary paperwork and bonding requirements. The Notice to Proceed would be issued by approximately December 3, 2020, with a construction start date of approximately January 2, 2021. Based on the schedule above, the completion date will be July 30, 2021.
5. Easements – This project on easements and City ROW. The Contractor shall not get off authorized areas without written consent from the landowner.
6. Submit pay request(s) ~~seven (7) days prior to monthly Board meeting (Third Thursday of each month) to Engineer~~ *fourteen (14) days prior to Board meeting on First Thursday of each month to the Engineer*. Once approved by the City, typically less than or equal to 30 days, the pay request will be paid by City of Litchfield (within 30 days).
7. Planholder's lists available upon request and at online at www.haengr.com.
8. Clarifications to the Plans and specifications currently include the following:
 - a. Plans: Existing utilities are shown based on available maps and information from the city, however it should be noted that all utilities may not be shown on the plans. No additional compensation will be allowed for any delay from utilities regardless if they are shown on the plans.
 - b. Specs: Mobilization will be paid at the lump sum bid price. Additional compensation will not be allowed for any remobilization.
9. Comments from Heneghan and Associates representatives:

A

Addendum #1 will include the replacement of the pavement on Tyler Ave. as part of the project and possible a bore for the storm sewer under Tyler Ave. (it was determined that a bore was not beneficial, so it wasn't included in addendum).

10. Comments from the City of Litchfield representatives:

None

11. Comments/Questions from Contractor's:

- A. Will pressure test be required for the water main, water service, and sewer forcemain?
Pressure test will be required for the water main, however the water services and sewer forcemain will not need to be pressure tested.
- B. Will bypass pumping be required as part of the forcemain relocation? At the pre-bid meeting the city mentioned that they could pump out the lift station, however after the meeting the city determined that they wanted the contractor to handle the bypassing and/or pumping out the lift station.
- C. Will the contractor need to provide construction layout? The initial construction layout will be provided by the city and be done by the engineer.
- D. Will storm sewer require bedding? Yes, the storm sewer will require aggregate as shown on plans for bedding and haunching of the pipe. The backfill for the pipe outside of paved areas shall be clean dirt.
- E. Where is the 36" PVC Pipe quantity shown in the bid schedule? Not shown, but will be added on addendum #1
- F. Will silt fence be required? None required
- G. Does the city have a dump site for the dirt or debris? No
- H. Does the engineer have an earth work calculation for the project? No
- I. What paperwork is required for the bid submittal? Bid documents are listed as items A-G on pages 5-6 of the bid form in the project specifications.
- J. Will a project site sign be needed? No

BID FORM

City of Litchfield

South Side Ditch Drainage Improvements - Phase 1

02134-301

TABLE OF CONTENTS

	Page
Article 1 – Bid Recipient	1
Article 2 – Bidder’s Acknowledgements	1
Article 3 – Bidder’s Representations	1
Article 4 – Bidder’s Certification	2
Article 5 – Basis of Bid	2
Article 6 – Time of Completion	5
Article 7 – Attachments to this Bid	5
Article 8 – Defined Terms	6
Article 9 – Bid Submittal	6

ARTICLE 1 – BID RECIPIENT

1.01 This Bid is submitted to:

Carol Burke, City Clerk

City of Litchfield

120 East Ryder Street, Litchfield, IL, 62056

1.02 The undersigned Bidder proposes and agrees, if this Bid is accepted, to enter into an Agreement with Owner in the form included in the Bidding Documents to perform all Work as specified or indicated in the Bidding Documents for the prices and within the times indicated in this Bid and in accordance with the other terms and conditions of the Bidding Documents.

ARTICLE 2 – BIDDER'S ACKNOWLEDGEMENTS

2.01 Bidder accepts all of the terms and conditions of the Instructions to Bidders, including without limitation those dealing with the disposition of Bid security. This Bid will remain subject to acceptance for 90 days after the Bid opening, or for such longer period of time that Bidder may agree to in writing upon request of Owner.

ARTICLE 3 – BIDDER'S REPRESENTATIONS

3.01 In submitting this Bid, Bidder represents that:

A. Bidder has examined and carefully studied the Bidding Documents, and any data and reference items identified in the Bidding Documents, and hereby acknowledges receipt of the following Addenda:

Addendum No.

Addendum, Date

_____	_____
_____	_____
_____	_____
_____	_____

B. Bidder has visited the Site, conducted a thorough, alert visual examination of the Site and adjacent areas, and become familiar with and satisfied itself as to the general, local, and Site conditions that may affect cost, progress, and performance of the Work.

C. Bidder is familiar with and has satisfied itself as to all Laws and Regulations that may affect cost, progress, and performance of the Work.

D. Bidder has carefully studied all: (1) reports of explorations and tests of subsurface conditions at or adjacent to the Site and all drawings of physical conditions relating to existing surface or subsurface structures at the Site that have been identified in the Supplementary Conditions, especially with respect to Technical Data in such reports and drawings, and (2) reports and drawings relating to Hazardous Environmental Conditions, if any, at or adjacent to the Site that have been identified in the Supplementary Conditions, especially with respect to Technical Data in such reports and drawings.

E. Bidder has considered the information known to Bidder itself; information commonly known to contractors doing business in the locality of the Site; information and observations obtained from visits to the Site; the Bidding Documents; and any Site-related reports and drawings identified in the Bidding Documents, with respect to the effect of such information, observations, and documents on (1) the cost,

- progress, and performance of the Work; (2) the means, methods, techniques, sequences, and procedures of construction to be employed by Bidder; and (3) Bidder's safety precautions and programs.
- F. Bidder agrees, based on the information and observations referred to in the preceding paragraph, that no further examinations, investigations, explorations, tests, studies, or data are necessary for the determination of this Bid for performance of the Work at the price bid and within the times required, and in accordance with the other terms and conditions of the Bidding Documents.
 - G. Bidder is aware of the general nature of work to be performed by Owner and others at the Site that relates to the Work as indicated in the Bidding Documents.
 - H. Bidder has given Engineer written notice of all conflicts, errors, ambiguities, or discrepancies that Bidder has discovered in the Bidding Documents, and confirms that the written resolution thereof by Engineer is acceptable to Bidder.
 - I. The Bidding Documents are generally sufficient to indicate and convey understanding of all terms and conditions for the performance and furnishing of the Work.
 - J. The submission of this Bid constitutes an incontrovertible representation by Bidder that Bidder has complied with every requirement of this Article, and that without exception the Bid and all prices in the Bid are premised upon performing and furnishing the Work required by the Bidding Documents.

ARTICLE 4 – BIDDER'S CERTIFICATION

4.01 Bidder certifies that:

- A. This Bid is genuine and not made in the interest of or on behalf of any undisclosed individual or entity and is not submitted in conformity with any collusive agreement or rules of any group, association, organization, or corporation;
- B. Bidder has not directly or indirectly induced or solicited any other Bidder to submit a false or sham Bid;
- C. Bidder has not solicited or induced any individual or entity to refrain from bidding; and
- D. Bidder has not engaged in corrupt, fraudulent, collusive, or coercive practices in competing for the Contract. For the purposes of this Paragraph 4.01.D:
 - 1. "corrupt practice" means the offering, giving, receiving, or soliciting of any thing of value likely to influence the action of a public official in the bidding process;
 - 2. "fraudulent practice" means an intentional misrepresentation of facts made (a) to influence the bidding process to the detriment of Owner, (b) to establish bid prices at artificial non-competitive levels, or (c) to deprive Owner of the benefits of free and open competition;
 - 3. "collusive practice" means a scheme or arrangement between two or more Bidders, with or without the knowledge of Owner, a purpose of which is to establish bid prices at artificial, non-competitive levels; and
 - 4. "coercive practice" means harming or threatening to harm, directly or indirectly, persons or their property to influence their participation in the bidding process or affect the execution of the Contract.

ARTICLE 5 – BASIS OF BID

5.01 Bidder will complete the Work in accordance with the Contract Documents for the following price(s):

PROJECT: South Side Ditch Drainage Improvements - Phase 1

ITEMS - BASE BID		QUANTITY	UNIT	UNIT PRICE	TOTAL PRICE
1	TREE REMOVAL	11	EACH	\$	\$
2	NITROGEN FERTILIZER NUTRIENT	180	POUND	\$	\$
3	PHOSPHORUS FERTILIZER NUTRIENT	180	POUND	\$	\$
4	POTASSIUM FERTILIZER NUTRIENT	180	POUND	\$	\$
5	DITCH GRADING & SHAPING	1921	FOOT	\$	\$
6	TRENCH BACKFILL	700	TON	\$	\$
7	SEEDING, CLASS 2	2	ACRE	\$	\$
8	MULCH, METHOD 2	1.5	ACRE	\$	\$
9	TEMPORARY EROSION CONTROL SEEDING	200	POUND	\$	\$
10	INLET AND PIPE PROTECTION	25	EACH	\$	\$
11	TURF REINFORCEMENT MAT	2199	SQ FT	\$	\$
12	EROSION CONTROL BLANKET	2260	SQ YD	\$	\$
13	STONE RIPRAP, CLASS A4	75	SQ YD	\$	\$
14	FILTER FABRIC	75	SQ YD	\$	\$
15	PORTLAND CEMENT CONCRETE ROADWAY PAVEMENT	100	SQ YD	\$	\$
16	PORTLAND CEMENT CONCRETE DRIVEWAY PAVEMENT	75	SQ YD	\$	\$
17	AGGREGATE SURFACE COURSE, TYPE B	166	TON	\$	\$
18	INCIDENTAL HOT-MIX ASPHALT SURFACING	71	TON	\$	\$
19	PORTLAND CEMENT CONCRETE SIDEWALK 4 INCH	241	SQ FT	\$	\$
20	DETECTABLE WARNINGS	16	SQ FT	\$	\$
21	PAVEMENT REMOVAL	350	SQ YD	\$	\$
22	TEMPORARY ROAD MAINTENANCE	1	LS	\$	\$
23	DRIVEWAY PAVEMENT REMOVAL	107	SQ YD	\$	\$
24	SIDEWALK REMOVAL	241	SQ FT	\$	\$
25	PIPE CULVERT REMOVAL	1253	FOOT	\$	\$
26	DRAINAGE STRUCTURE TO BE REMOVED	3	EACH	\$	\$
27	PRECAST REINFORCED CONCRETE FLARED END SECTIONS 48" RCE (60"x38")	1	EACH	\$	\$
28	PRECAST REINFORCED CONCRETE FLARED END SECTIONS 24"	4	EACH	\$	\$
29	PRECAST REINFORCED CONCRETE FLARED END SECTIONS 18"	2	EACH	\$	\$
30	PRECAST REINFORCED CONCRETE FLARED END SECTIONS 15"	1	EACH	\$	\$
31	STORM SEWERS, CLASS A, TYPE 1 15"	17	FOOT	\$	\$
32	STORM SEWERS, CLASS A, TYPE 1 18"	75	FOOT	\$	\$

33	STORM SEWERS, CLASS A, TYPE 1 24"	100	FOOT	\$	\$
34	STORM SEWERS, CLASS A, TYPE 1 36"	421	FOOT	\$	\$
35	STORM SEWERS, CLASS A, TYPE 1 42"	704	FOOT	\$	\$
36	STORM SEWERS, CLASS A, TYPE 1 48" RCE (60"X38")	819	FOOT	\$	\$
37	STORM SEWERS, (WATERMAIN REQUIREMENTS) 18"	47	FOOT	\$	\$
38	STORM SEWERS, (WATERMAIN REQUIREMENTS) 36"	65	FOOT	\$	\$
39	MANHOLES, TYPE A, 8'-DIAMETER, TYPE 1 FRAME AND GRATE (OPEN)	1	EACH	\$	\$
40	MANHOLES, TYPE A, 8'-DIAMETER, TYPE 1 FRAME AND LID (CLOSED)	1	EACH	\$	\$
41	MANHOLES, TYPE A, 7'-DIAMETER, TYPE 1 FRAME AND GRATE (OPEN)	3	EACH	\$	\$
42	MANHOLES, TYPE A, 7'-DIAMETER, TYPE 1 FRAME AND LID (CLOSED)	1	EACH	\$	\$
43	MANHOLES, TYPE A, 7'-DIAMETER, MEDIAN GRATE (NEENAH R-3807)	2	EACH	\$	\$
44	MANHOLES, TYPE A, 6'-DIAMETER, TYPE 1 FRAME AND GRATE (CLOSED)	1	EACH	\$	\$
45	MANHOLES, TYPE A, 5'-DIAMETER, TYPE 1 FRAME AND GRATE (OPEN)	2	EACH	\$	\$
46	INLETS, TYPE B, TYPE 1 FRAME AND GRATE (OPEN)	2	EACH	\$	\$
47	IN-LINE INLET, TYPE 8 GRATE	3	EACH	\$	\$
48	4'x4' PCC AREA INLET	1	EACH	\$	\$
49	7'x7' PCC AREA INLET	3	EACH	\$	\$
50	STORM SEWER CONNECTION (EXISTING PIPE TO INLET)	1	EACH	\$	\$
51	REBUILD SANITARY SEWER LATERAL	5	EACH	\$	\$
52	WATER MAIN ADJUSTMENT	4	EACH	\$	\$
53	WATER SERVICE ADJUSTMENT	3	EACH	\$	\$
54	CONNECT EXISTING DOWNSPOUTS	5	EACH	\$	\$
55	SANITARY SEWER FORCE MAIN ADJUSTMENT	1	EACH	\$	\$
56	REMOVE AND RESET EXISTING SIGNS	5	EACH	\$	\$
57	EXPLORATION TRENCH	90	FOOT	\$	\$
58	MOBILIZATION	1	L SUM	\$	\$
59	TRAFFIC CONTROL AND PROTECTION, (SPECIAL)	1	L SUM	\$	\$

Dollars

(In Words)

Alternate Bid #1

ITEMS - Alternate Bid #1		QUANTITY	UNIT	UNIT PRICE	TOTAL PRICE
2	Nitrogen Fertilizer Nutrient	23	POUND	\$	\$
3	Phosphorus Fertilizer Nutrient	23	POUND	\$	\$
4	Potassium Fertilizer Nutrient	23	POUND	\$	\$
5	Ditch Grading & Shaping	311	LF	\$	\$
6	Trench Backfill	13	TON	\$	\$
7	Seeding, Class 2	0.25	ACRE	\$	\$
8	Mulch, Method 2	0.2	ACRE	\$	\$
9	Temporary Erosion Control Seeding	25	POUND	\$	\$
10	Inlet and Pipe Protection	4	EA	\$	\$
11	Turf Reinforcement Mat	203	SQ FT	\$	\$
12	Erosion Control Blanket	392	SQ YD	\$	\$
18	Incidental Hot-Mix Asphalt Surfacing	9	TON	\$	\$
22	Temporary Road Maintenance	1	LS	\$	\$
23	Driveway Pavement Removal	40	SQ YD	\$	\$
25	Pipe Culvert Removal	105	LF	\$	\$
29	Precast Reinforced Concrete Flared End Sections 18"	1	EA	\$	\$
32	Storm Sewers, Class A, Type 1 18"	105	LF	\$	\$
33	Storm Sewers, Class A, Type 1 24"	215	LF	\$	\$
46	Inlets, Type B, Type 1 Frame and Grate (Open)	1	EA	\$	\$
48	4'x4' PCC Area Inlet	2	EA	\$	\$
53	Water Service Adjustment	1	EA	\$	\$
56	Remove and Reset Existing Signs	1	EA	\$	\$
59	Traffic Control and Protection, (Special)	1	LS	\$	\$
TOTAL ALT 1 BID AMOUNT				\$	-

Dollars

(In Words)

ARTICLE 6 – TIME OF COMPLETION

- 6.01 Bidder agrees that the Work will be substantially complete and will be completed and ready for final payment in accordance with Paragraph 15.06 of the General Conditions on or before the dates or within the number of calendar days indicated in the Agreement.
- 6.03 Bidder accepts the provisions of the Agreement as to liquidated damages.

ARTICLE 7 – ATTACHMENTS TO THIS BID

- 7.01 The following documents are submitted with and made a condition of this Bid:

A. Required Bid security;

- B. List of Proposed Subcontractors;
- C. List of Proposed Suppliers;
- D. List of Project References;
- E. Evidence of authority to do business in the state of the Project; or a written covenant to obtain such license within the time for acceptance of Bids;
- F. Contractor's License No.: _____ [or] Evidence of Bidder's ability to obtain a State Contractor's License and a covenant by Bidder to obtain said license within the time for acceptance of Bids;
- G. Required Bidder Qualification Statement with supporting data; and

ARTICLE 8 – DEFINED TERMS

8.01 The terms used in this Bid with initial capital letters have the meanings stated in the Instructions to Bidders, the General Conditions, and the Supplementary Conditions.

ARTICLE 9 – BID SUBMITTAL

BIDDER: *[Indicate correct name of bidding entity]*

By:

[Signature] _____

[Printed name] _____

(If Bidder is a corporation, a limited liability company, a partnership, or a joint venture, attach evidence of authority to sign.)

Attest:

[Signature] _____

[Printed name] _____

Title: _____

Submittal Date: _____

Address for giving notices:

Telephone Number: _____

Fax Number: _____

Contact Name and e-mail address: _____

Bidder's License No.:

(where applicable)

PA\\tl-s\\shared\\clients\\02134 - litchfield\\301 - south side ditch storm sewer improvements - phase 1\\out\\dwg\\general\\notes - sqi - schedule.dwg
PLOTTED: 10/16/2020 9:11:02:41 AM BY: jbr - cdm

SUMMARY OF QUANTITIES						
SP	ITEM NUMBER	ITEM	UNIT	BASE BID	ALT. #1	TOTAL QUANTITY
*	1	TREE REMOVAL	EACH	11	0	11
	2	NITROGEN FERTILIZER NUTRIENT	POUND	180	23	203
	3	PHOSPHORUS FERTILIZER NUTRIENT	POUND	180	23	203
	4	POTASSIUM FERTILIZER NUTRIENT	POUND	180	23	203
*	5	DITCH GRADING & SHAPING	FOOT	1921	311	2,232
	6	TRENCH BACKFILL	TON	700	13	713
	7	SEEDING, CLASS 2	ACRE	2	0.25	2.25
	8	MULCH, METHOD 2	ACRE	1.5	0.2	1.7
	9	TEMPORARY EROSION CONTROL SEEDING	POUND	200	25	225
	10	INLET AND PIPE PROTECTION	EACH	25	4	29
*	11	TURF REINFORCEMENT MAT	SQ FT	2199	203	2402
*	12	EROSION CONTROL BLANKET	SQ YD	2260	392	2652
	13	STONE RIPRAP, CLASS A4	SQ YD	75	0	75
	14	FILTER FABRIC	SQ YD	75	0	75
*	15	PORTLAND CEMENT CONCRETE ROADWAY PAVEMENT	SQ YD	100	0	100
*	16	PORTLAND CEMENT CONCRETE DRIVEWAY PAVEMENT	SQ YD	75	0	75
*	17	AGGREGATE SURFACE COURSE, TYPE B	TON	166	0	166
*	18	INCIDENTAL HOT-MIX ASPHALT SURFACING	TON	71	9	80
	19	PORTLAND CEMENT CONCRETE SIDEWALK 4 INCH	SQ FT	241	0	241
	20	DETECTABLE WARNINGS	SQ FT	16	0	16
*	21	PAVEMENT REMOVAL	SQ YD	350	0	350
*	22	TEMPORARY ROAD MAINTENANCE	LS	1	1	2
	23	DRIVEWAY PAVEMENT REMOVAL	SQ YD	107	40	147
	24	SIDEWALK REMOVAL	SQ FT	241	0	241
	25	PIPE CULVERT REMOVAL	FOOT	1253	105	1,358
*	26	DRAINAGE STRUCTURE TO BE REMOVED	EACH	3	0	3
	27	PRECAST REINFORCED CONCRETE FLARED END SECTIONS 48" RCE (60"x38")	EACH	1	0	1
	28	PRECAST REINFORCED CONCRETE FLARED END SECTIONS 24"	EACH	4	0	4
	29	PRECAST REINFORCED CONCRETE FLARED END SECTIONS 18"	EACH	2	1	3
	30	PRECAST REINFORCED CONCRETE FLARED END SECTIONS 15"	EACH	1	0	1
	31	STORM SEWERS, CLASS A, TYPE 1 15"	FOOT	17	0	17
	32	STORM SEWERS, CLASS A, TYPE 1 18"	FOOT	75	105	180
	33	STORM SEWERS, CLASS A, TYPE 1 24"	FOOT	108	215	315
	34	STORM SEWERS, CLASS A, TYPE 1 36"	FOOT	421	0	421
	35	STORM SEWERS, CLASS A, TYPE 1 42"	FOOT	704	0	704
	36	STORM SEWERS, CLASS A, TYPE 1 48" RCE (60"x38")	FOOT	819	0	819
*	37	STORM SEWERS, (WATERMAIN REQUIREMENTS) 18"	FOOT	47	0	47
*	38	STORM SEWERS, (WATERMAIN REQUIREMENTS) 36"	FOOT	65	0	65
	39	MANHOLES, TYPE A, 8'-DIAMETER, TYPE 1 FRAME AND GRATE (OPEN)	EACH	1	0	1
	40	MANHOLES, TYPE A, 8'-DIAMETER, TYPE 1 FRAME AND LID (CLOSED)	EACH	1	0	1
	41	MANHOLES, TYPE A, 7'-DIAMETER, TYPE 1 FRAME AND GRATE (OPEN)	EACH	3	0	3
	42	MANHOLES, TYPE A, 7'-DIAMETER, TYPE 1 FRAME AND LID (CLOSED)	EACH	1	0	1
	43	MANHOLES, TYPE A, 7'-DIAMETER, MEDIAN GRATE (NEENAH R-3807)	EACH	2	0	2
	44	MANHOLES, TYPE A, 6'-DIAMETER, TYPE 1 FRAME AND GRATE (CLOSED)	EACH	1	0	1
	45	MANHOLES, TYPE A, 5'-DIAMETER, TYPE 1 FRAME AND GRATE (OPEN)	EACH	2	0	2
	46	INLETS, TYPE B, TYPE 1 FRAME AND GRATE (OPEN)	EACH	2	1	3
*	47	IN-LINE INLET, TYPE 8 GRATE	EACH	3	0	
	48	4'x4' PCC AREA INLET	EACH	1	2	3
	49	7'x7' PCC AREA INLET	EACH	3	0	3
*	50	STORM SEWER CONNECTION (EXISTING PIPE TO INLET)	EACH	1	0	1
*	51	REBUILD SANITARY SEWER LATERAL	EACH	5	0	5
*	52	WATER MAIN ADJUSTMENT	EACH	4	0	4
*	53	WATER SERVICE ADJUSTMENT	EACH	3	1	4
*	54	CONNECT EXISTING DOWNSPOUTS	EACH	5	0	5
*	55	SANITARY SEWER FORCE MAIN ADJUSTMENT	EACH	1	0	1
*	56	REMOVE AND RESET EXISTING SIGNS	EACH	5	1	6
*	57	EXPLORATION TRENCH	FOOT	90	0	90
	58	MOBILIZATION	L SUM	1	0	1
*	59	TRAFFIC CONTROL AND PROTECTION, (SPECIAL)	L SUM	1	1	2
* SPECIAL PROVISION PROVIDED						

REVISIONS 10-16-20

HENEGHAN &
ASSOCIATES, P.C.



DESIGN FIRM NUMBERS:
IL: 184-002692, EXPIRES APRIL 30, 2021
MO: 001310, EXPIRES DECEMBER 31, 2020

1004 STATE HWY. 16
JERSEYVILLE, IL 62052
P: (618) 498-6418
F: (618) 498-6410

838 EAST McCORD STREET
CENTRALIA, IL 62801
P: (618) 533-6525
F: (618) 533-6652

310A VISION DRIVE
COLUMBIA, IL 62236
P: (618) 281-8133
F: (618) 281-8290

1929 RICHARDSON ROAD
ARNOLD, MO 63010
P: (636) 464-3610
F: (636) 464-2059

REVISIONS	NO.	DATE				

SUMMARY OF QUANTITIES		CITY OF LITCHFIELD MONTGOMERY COUNTY, ILLINOIS
SOUTH SIDE DITCH DRAINAGE IMPROVEMENTS - PHASE 1		

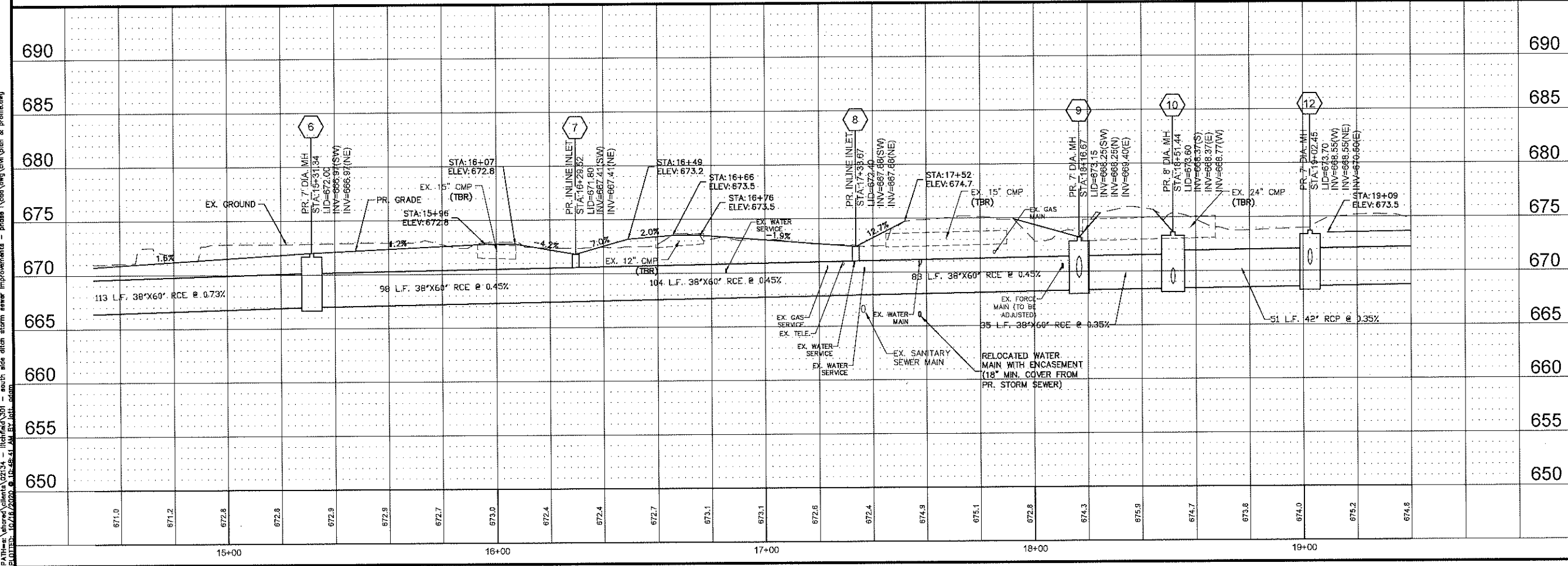
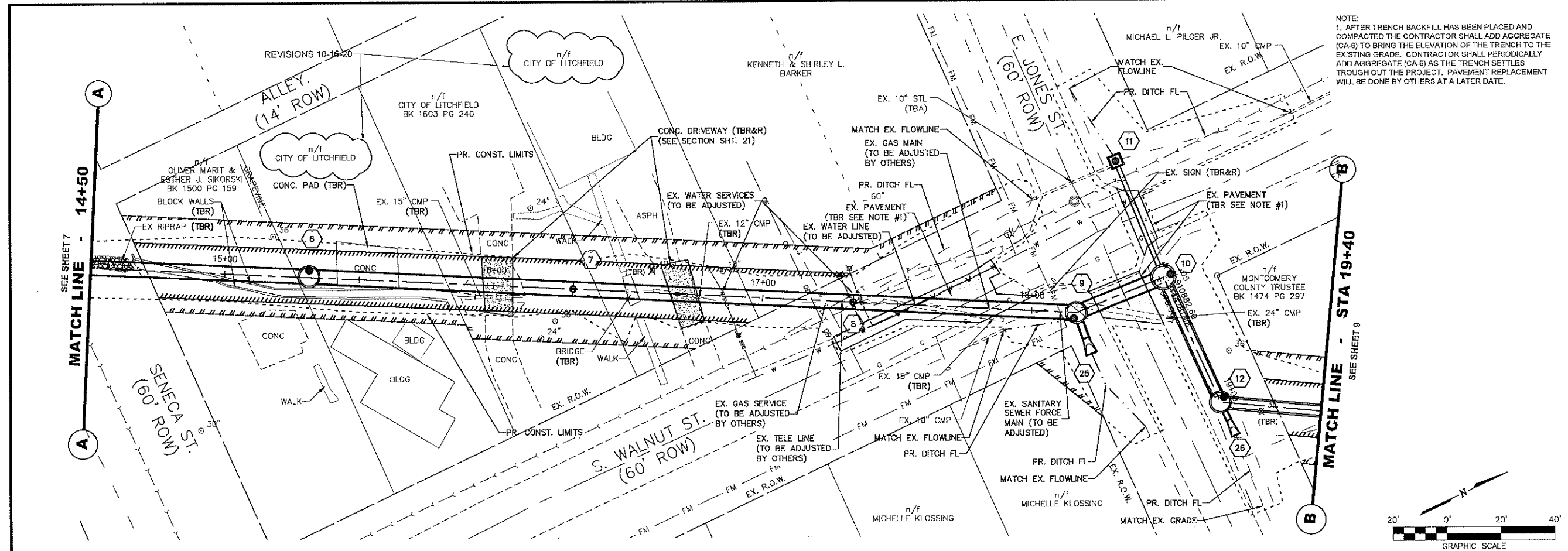
DRAWN BY:	CSH
CHECKED BY:	CAW
APPROVED BY:	CAW
HORIZONTAL SCALE:	N/A
VERTICAL SCALE:	N/A
PROJECT NO.	02134-301
DATE:	8/11/2020
SHEET NO.	3
3 OF 22 SHEETS	

CITY OF LITCHFIELD
MONTGOMERY COUNTY, ILLINOIS

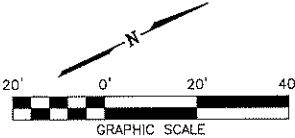
4 OF 22 SHEETS

- REVISIONS 10-16-20

\\p01\share\clients\02134 - Litchfield\02134 - south side ditch storm sewer improvements - phase 1\dwg\civil\plan & profile.dwg
PLOTED: 10/16/2020 9:10:48 AM BY: jlt



NOTE:
1. AFTER TRENCH BACKFILL HAS BEEN PLACED AND COMPACTED THE CONTRACTOR SHALL ADD AGGREGATE (CA-6) TO BRING THE ELEVATION OF THE TRENCH TO THE EXISTING GRADE. CONTRACTOR SHALL PERIODICALLY ADD AGGREGATE (CA-6) AS THE TRENCH SETTLES THROUGH OUT THE PROJECT. PAVEMENT REPLACEMENT WILL BE DONE BY OTHERS AT A LATER DATE.



HENEGHAN & ASSOCIATES, P.C.
HA
ENGINEERS-SURVEYORS
www.haengr.com

DESIGN FIRM NUMBERS:
IL: 154-002892, EXPIRES APRIL 30, 2021
MO: 001310, EXPIRES DECEMBER 31, 2020

1004 STATE HWY. 16
JERSEYVILLE, IL 62052
P: (618) 498-6416
F: (618) 498-6410

838 EAST McCORD STREET
CENTRALIA, IL 62801
P: (618) 533-6525
F: (618) 533-6652

310A VISION DRIVE
COLUMBIA, IL 62236
P: (618) 281-8133
F: (618) 281-8290

1929 RICHARDSON ROAD
ARNOLD, MO 63010
P: (636) 464-3610
F: (636) 464-2059

NO.	DATE	REVISIONS	PROPERTY OWNERS
1	10-16-20		

PLAN & PROFILE

SOUTH SIDE DITCH DRAINAGE IMPROVEMENTS - PHASE 1

CITY OF LITCHFIELD
MONTGOMERY COUNTY, ILLINOIS

DRAWN BY: CSH

CHECKED BY: CAW

APPROVED BY: CAW

HORIZONTAL SCALE: 1"=20'

VERTICAL SCALE: 1"=5'

PROJECT NO. 02134-301

DATE: 8/11/2020

SHEET NO. 8

8 OF 22 SHEETS

